

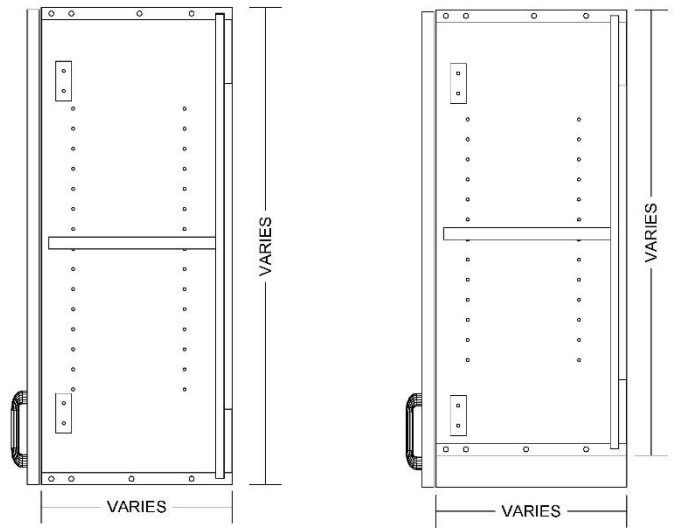
W1DL / W1DR



Left Hand Hinge

Right Hand Hinge

Single door wall cabinet



TYPICAL: W1DL-1AS-M
W1DR-1AS-M

WITH & W/O LIGHT RAIL APPLICATIONS

Laminate cabinets are available in a wide range of standard features and options. Additionally, custom configurations are possible. The website supports many of the features needed to quote and order commercial grade laminate or melamine products. The best value is made available by selecting from the standard features listed below (default settings in the configurator).

Standard door

Left hand hinge
Right hand hinge

Standard Sizes

Width ranges 9" to 24"
Height ranges 12" to 48"
Depth ranges 9" to 24"

Standard features

Unfinished Sides – ¾" white melamine
Finished Sides - ¾" HPL exterior, white liner interior
Finished bottom - ¾" HPL exterior, white liner interior
Unfinished top - ¾" white melamine
Unfinished back – ½" white melamine (Dado in sides)
Unfinished shelves - ¾" white melamine (Less than 27" wide)
Unfinished shelves – 1" white melamine (27" and wider)
Doors – ¾" HPL exterior, white liner interior
Cabinet edge band - .018 PVC
Door edge band – .018 PVC or 3mm PVC

Standard Hardware

Hinges – 120-degree Blum Hinge
Pull – 4" satin chrome wire pull
Shelf Clips – 5mm metal spoon

Standard Options

Finished ends – ¾" HPL exterior, white liner interior
Light Rails – ¾" HPL strip, shipped loose for field installation. (Light rail butts finished ends. Cabinet Height does not include the height of the light rail)

Custom Options

Hang rails – ¾" plywood "French Cleats". Wall cleat shipped loose for field installation.
Locks – Choice of lock and key options
Finished Interiors – ¾" HPL interiors with either white liner exterior or matching HPL exteriors, determined by finished end selection.

Accessory Options

See Accessory list which include Hardware, Components and Operations.

W1DL-BLD / W1DR-BLD

Fixed Panel

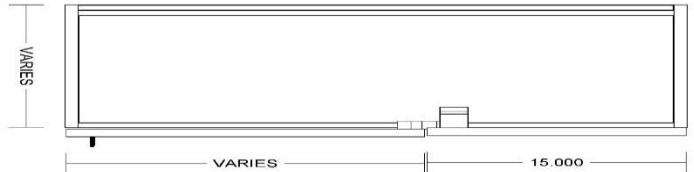
Fixed Panel



Left Hand Hinge

Right Hand Hinge

**Single door with fixed panel
for corner application**



**TYPICAL: W1DL-BLD-1AS-M
W1DR-BLD-1AS-M**

Laminate cabinets are available in a wide range of standard features and options. Additionally, custom configurations are possible. The website supports many of the features needed to quote and order commercial grade laminate or melamine products. The best value is made available by selecting from the standard features listed below (default settings in the configurator).

Standard door

Left hand hinge
Right hand hinge

Standard Sizes

Width ranges 24" to 45"
Height ranges 12" to 48"
Depth ranges 9" to 24"

Standard features

Unfinished Sides – ¾" white melamine
Finished Sides - ¾" HPL exterior, white liner interior
Finished bottom - ¾" HPL exterior, white liner interior
Unfinished top - ¾" white melamine
Unfinished back – ½" white melamine (Dado in sides)
Unfinished shelves - ¾" white melamine (Less than 27" wide)
Unfinished shelves – 1" white melamine (27" and wider)
Doors – ¾" HPL exterior, white liner interior
Cabinet edge band - .018 PVC
Door edge band – .018 PVC or 3mm PVC

Standard Hardware

Hinges – 120-degree Blum Hinge (Blind panel hinge)
Pull – 4" satin chrome wire pull
Shelf Clips – 5mm metal spoon

Standard Options

Finished ends – ¾" HPL exterior, white liner interior
Light Rails – ¾" HPL strip, shipped loose for field installation. (Light rail butts finished ends. Cabinet Height does not include the height of the light rail)

Custom Options

Hang rails – ¾" plywood "French Cleats". Wall cleat shipped loose for field installation.
Locks – Choice of lock and key options
Finished Interiors – ¾" HPL interiors with either white liner exterior or matching HPL exteriors, determined by finished end selection.

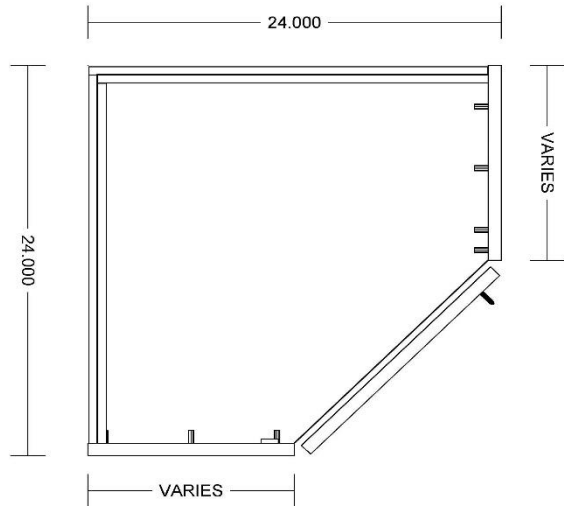
Accessory Options

See Accessory list which include Hardware, Components and Operations.

W1D-CORNER



Left Hand Hinge Right Hand Hinge
Single door wall cabinet with
45-degree door
for corner application



TYPICAL: W1DL-1AS-M
W1DR-1AS-M

Laminate cabinets are available in a wide range of standard features and options. Additionally, custom configurations are possible. The website supports many of the features needed to quote and order commercial grade laminate or melamine products. The best value is made available by selecting from the standard features listed below (default settings in the configurator).

Standard door

Left hand hinge
Right hand hinge

Standard Sizes

Width ranges 24" to 30" (Cabinet Depths will be adjusted to match adjoining cabinets)
Height ranges 12" to 48"
Depth ranges 24" to 30" (Cabinet Depths will be adjusted to match adjoining cabinets)

Standard features

Unfinished Sides – 3/8" white melamine
Finished Sides - 3/4" HPL exterior, white liner interior
Finished bottom - 3/4" HPL exterior, white liner interior
Unfinished top - 3/8" white melamine
Unfinished back – 1/2" white melamine (Dado in sides)
Unfinished shelves - 3/8" white melamine (Less than 27" wide)
Unfinished shelves – 1" white melamine (27" and wider)
Doors – 3/4" HPL exterior, white liner interior
Cabinet edge band - .018 PVC
Door edge band – .018 PVC or 3mm PVC

Standard Hardware

Hinges – 120-degree Blum Hinge (45-degree corner hinge)
Pull – 4" satin chrome wire pull
Shelf Clips – 5mm metal spoon

Standard Options

Finished ends – 3/4" HPL exterior, white liner interior
Light Rails – 3/4" HPL strip, shipped loose for field installation. (Light rail butts finished ends. Cabinet Height does not include the height of the light rail)

Custom Options

Hang rails – 3/4" plywood "French Cleats". Wall cleat shipped loose for field installation.
Locks – Choice of lock and key options
Finished Interiors – 3/4" HPL interiors with either white liner exterior or matching HPL exteriors, determined by finished end selection.

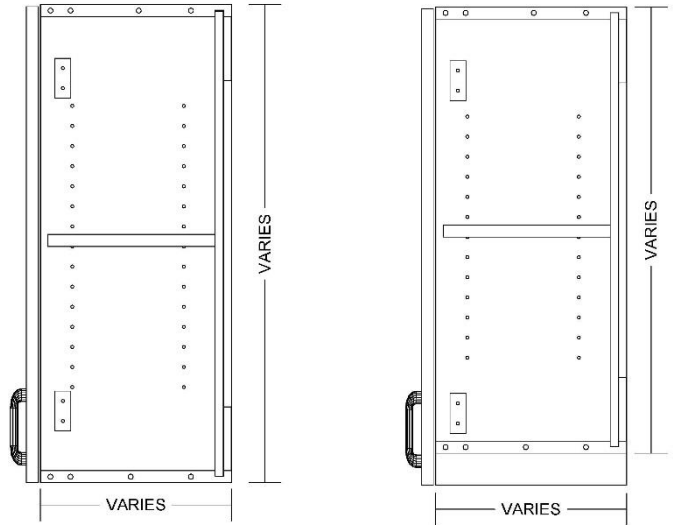
Accessory Options

See Accessory list which include Hardware, Components and Operations.

W2D



Double door wall cabinet



**TYPICAL: W2D-1AS-M
WITH & W/OUT LIGHT RAIL APPLICATIONS**

Laminate cabinets are available in a wide range of standard features and options. Additionally, custom configurations are possible. The website supports many of the features needed to quote and order commercial grade laminate or melamine products. The best value is made available by selecting from the standard features listed below (default settings in the configurator).

Standard door

Hinged in Pairs

Standard Sizes

Width ranges 18" to 39"
Height ranges 12" to 48"
Depth ranges 9" to 24"

Standard features

Unfinished Sides – ¾" white melamine
Finished Sides - ¾" HPL exterior, white liner interior
Finished bottom - ¾" HPL exterior, white liner interior
Unfinished top - ¾" white melamine
Unfinished back – ½" white melamine (Dado in sides)
Unfinished shelves - ¾" white melamine (Less than 27" wide)
Unfinished shelves – 1" white melamine (27" and wider)
Doors – ¾" HPL exterior, white liner interior
Cabinet edge band - .018 PVC
Door edge band – .018 PVC or 3mm PVC

Standard Hardware

Hinges – 120-degree Blum Hinge
Pull – 4" satin chrome wire pull
Shelf Clips – 5mm metal spoon

Standard Options

Finished ends – ¾" HPL exterior, white liner interior
Light Rails – ¾" HPL strip, shipped loose for field installation. (Light rail butts finished ends. Cabinet Height does not include the height of the light rail)

Custom Options

Hang rails – ¾" plywood "French Cleats". Wall cleat shipped loose for field installation.
Locks – Choice of lock and key options
Finished Interiors – ¾" HPL interiors with either white liner exterior or matching HPL exteriors, determined by finished end selection.

Accessory Options

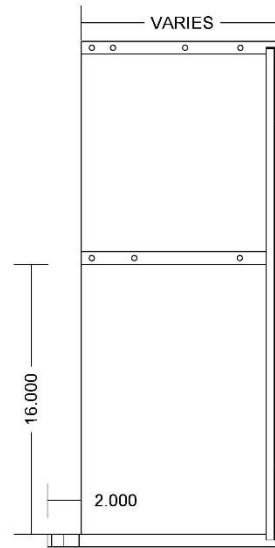
See Accessory list which include Hardware, Components and Operations.

WOPEN-MW



Radius Corner

**Wall open cabinet with
Microwave space**



**TYPICAL: WOPEN-MW-0AS-L-B2
NO LIGHT RAIL APPLICATIONS**

Laminate cabinets are available in a wide range of standard features and options. Additionally, custom configurations are possible. The website supports many of the features needed to quote and order commercial grade laminate or melamine products. The best value is made available by selecting from the standard features listed below (default settings in the configurator).

Standard door

Hinged in Pairs

Standard Sizes

Width ranges 18" to 39"
Height ranges 12" to 48"
Depth ranges 9" to 24"

Standard features

Unfinished Sides – ¾" HPL Interior, white liner exterior
Finished Sides - ¾" HPL exterior, HPL interior
Finished bottom - ¾" HPL exterior, HPL interior (Radius corner on extended bottom)
Unfinished top - ¾" HPL Interior, white liner exterior
Unfinished back – ½" HPL interior, white liner exterior
Unfinished shelves - ¾" white melamine (Less than 27" wide)
Unfinished shelves – 1" white melamine (27" and wider)
Doors – None
Cabinet edge band - .018 PVC
Door edge band – .None

Standard Hardware

Hinges – None
Pull – None
Shelf Clips – 5mm metal spoon

Standard Options

Finished ends – ¾" HPL exterior, HPL interior
Light Rails – Light rails are not recommended for this cabinet

Custom Options

Hang rails – ¾" plywood "French Cleats". Wall cleat shipped loose for field installation.
Locks – None

Accessory Options

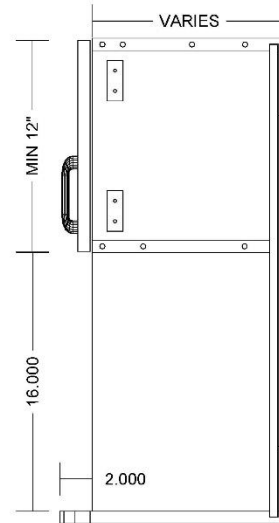
Finished Interiors are standard because of the exposed open area. Please unselect FI if white melamine is desired
See Accessory list which include Hardware, Components and Operations.

W2D-MW



Radius Corner

**Double door wall cabinet
with microwave space**



**TYPICAL: W2D-MW-0AS-L-B2
NO LIGHT RAIL APPLICATIONS**

Laminate cabinets are available in a wide range of standard features and options. Additionally, custom configurations are possible. The website supports many of the features needed to quote and order commercial grade laminate or melamine products. The best value is made available by selecting from the standard features listed below (default settings in the configurator).

Standard door

Hinged in Pairs

Standard Sizes

Width ranges 18" to 39"
Height ranges 12" to 48"
Depth ranges 9" to 24"

Standard features

Unfinished Sides – 3/4" HPL Interior, white liner exterior
Finished Sides - 3/4" HPL exterior, HPL interior
Finished bottom - 3/4" HPL exterior, HPL interior (Radius corner on extended bottom)
Unfinished top - 3/4" HPL Interior, white liner exterior
Unfinished back – 1/2" HPL interior, white liner exterior
Unfinished shelves - 3/4" white melamine (Less than 27" wide)
Unfinished shelves – 1" white melamine (27" and wider)
Doors – 3/4" HPL exterior, white liner interior
Cabinet edge band - .018 PVC
Door edge band – .018 PVC or 3mm PVC

Standard Hardware

Hinges – 120-degree Blum Hinge
Pull – 4" satin chrome wire pull
Shelf Clips – 5mm metal spoon

Standard Options

Finished ends – 3/4" HPL exterior, HPL interior
Light Rails – Light rails are not recommended for this cabinet

Custom Options

Hang rails – 3/4" plywood "French Cleats". Wall cleat shipped loose for field installation.
Locks – Choice of lock and key options

Finished Interiors are standard because of the exposed open area. Please unselect FI if white melamine is desired

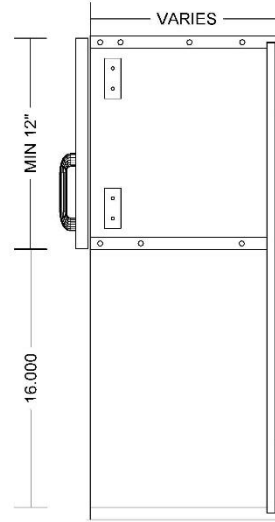
Accessory Options

See Accessory list which include Hardware, Components and Operations.

W2D-BO



**Double door wall cabinet
with open shelf space**



**TYPICAL: W2D-BOPEN-0AS-TB -L
NO LIGHT RAIL APPLICATIONS**

Laminate cabinets are available in a wide range of standard features and options. Additionally, custom configurations are possible. The website supports many of the features needed to quote and order commercial grade laminate or melamine products. The best value is made available by selecting from the standard features listed below (default settings in the configurator).

Standard door

Hinged in Pairs

Standard Sizes

Width ranges 18" to 39"
Height ranges 12" to 48"
Depth ranges 9" to 24"

Standard features

Unfinished Sides – ¾" HPL Interior, white liner exterior
Finished Sides - ¾" HPL exterior, HPL interior
Finished bottom - ¾" HPL exterior, HPL interior
Unfinished top - ¾" HPL Interior, white liner exterior
Unfinished back – ½" HPL interior, white liner exterior
Unfinished shelves - ¾" white melamine (Less than 27" wide)
Unfinished shelves – 1" white melamine (27" and wider)
Doors – ¾" HPL exterior, white liner interior
Cabinet edge band - .018 PVC
Door edge band – .018 PVC or 3mm PVC

Standard Hardware

Hinges – 120-degree Blum Hinge
Pull – 4" satin chrome wire pull
Shelf Clips – 5mm metal spoon

Standard Options

Finished ends – ¾" HPL exterior, HPL interior
Light Rails – ¾" HPL strip, shipped loose for field installation. (Light rail butts finished ends. Cabinet Height does not include the height of the light rail)

Custom Options

Hang rails – ¾" plywood "French Cleats". Wall cleat shipped loose for field installation.
Locks – Choice of lock and key options
Finished Interiors are standard because of the exposed open area. Please unselect FI if white melamine is desired

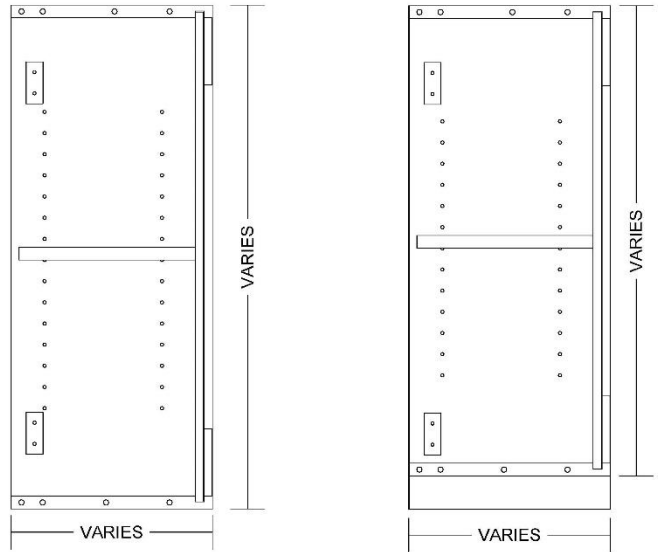
Accessory Options

See Accessory list which include Hardware, Components and Operations.

WOPEN



Open wall cabinet



**TYPICAL: WOPEN-1AS-L
WITH & W/OUT LIGHT RAIL APPLICATIONS**

Laminate cabinets are available in a wide range of standard features and options. Additionally, custom configurations are possible. The website supports many of the features needed to quote and order commercial grade laminate or melamine products. The best value is made available by selecting from the standard features listed below (default settings in the configurator).

Standard door

None

Standard Sizes

Width ranges 9" to 39"
Height ranges 12" to 48"
Depth ranges 9" to 24"

Standard features

Unfinished Sides – ¾" HPL Interior, white liner exterior
Finished Sides - ¾" HPL exterior, HPL interior
Finished bottom - ¾" HPL exterior, HPL interior
Unfinished top - ¾" HPL Interior, white liner exterior
Unfinished back – ½" HPL interior, white liner exterior
Unfinished shelves - ¾" HPL 2 sides (Less than 27" wide)
Unfinished shelves – 1" HPL 2 sides (27" and wider)
Doors – None
Cabinet edge band - .018 PVC
Door edge band – .None

Standard Hardware

Hinges – None
Pull – None
Shelf Clips – 5mm metal spoon

Standard Options

Finished ends – ¾" HPL exterior, HPL interior
Light Rails – ¾" HPL strip, shipped loose for field installation. (Light rail butts finished ends. Cabinet Height does not include the height of the light rail)

Custom Options

Hang rails – ¾" plywood "French Cleats". Wall cleat shipped loose for field installation.
Locks – None
Finished Interiors – Finished Interiors are standard because of the exposed open area. Please unselect FI if white melamine is desired

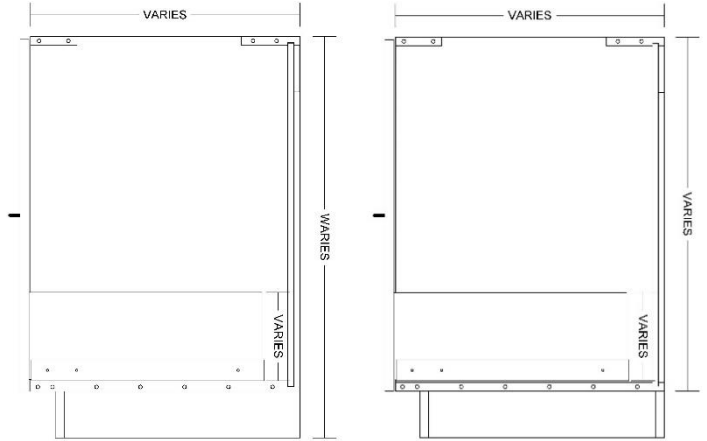
Accessory Options

See Accessory list which include Hardware, Components and Operations.

B0D1D



Base 1 drawer cabinet



**TYPICAL: B0D1D-M
INTEGRAL AND LOOSE SUBBASE APPLICATIONS**

Laminate cabinets are available in a wide range of standard features and options. Additionally, custom configurations are possible. The website supports many of the features needed to quote and order commercial grade laminate or melamine products. The best value is made available by selecting from the standard features listed below (default settings in the configurator).

Standard door

None

Standard Sizes

Width ranges 9" to 30"
Height ranges 18" to 42"
Depth ranges 9" to 30"

Standard features

Unfinished Sides – 3/4" white melamine
Finished Sides - 3/4" HPL exterior, white liner interior
Unfinished bottom - 3/4" white melamine
Unfinished top stretchers - 3/4" white melamine
Unfinished back – 1/2" white melamine (Dado in sides)
Unfinished shelves - None
Unfinished shelves – None
Drawer front – 3/4" HPL exterior, white liner interior
Cabinet edge band - .018 PVC
Drawer front edge band – .018 PVC or 3mm PVC
Drawer Box – 1/2" white melamine

Standard Hardware

Hinges – None
Drawer Slide – FR5000 Fullterer full extension ball bearing (100 lb.)
Pull – 4" satin chrome wire pull
Shelf Clips – None

Standard Options

Finished ends – 3/4" HPL exterior, white liner interior

Custom Options

Sub-Bases – 3/4" plywood construction (Cabinets have a flush bottom, sub-bases ordered separately)
Locks – Choice of lock and key options
Finished Interiors – 3/4" HPL interiors with either white liner exterior or matching HPL exteriors, determined by finished end selection.

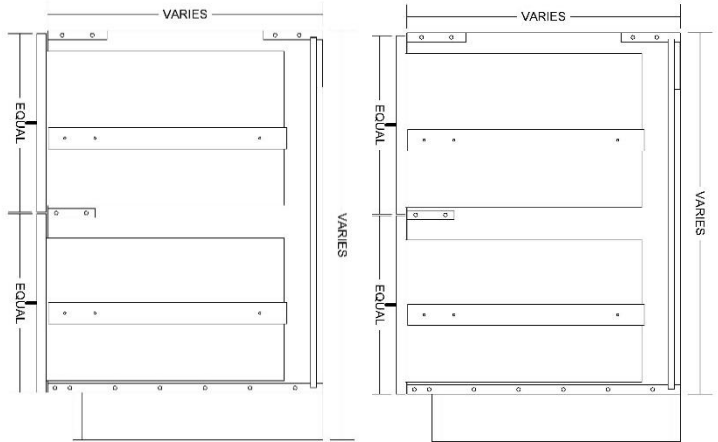
Accessory Options

See Accessory list which include Hardware, Components and Operations.

B0D2D



**Base 2 drawer cabinet
2 equal drawer fronts**



**TYPICAL: B0D2D-M
INTEGRAL AND LOOSE SUBBASE APPLICATIONS**

Laminate cabinets are available in a wide range of standard features and options. Additionally, custom configurations are possible. The website supports many of the features needed to quote and order commercial grade laminate or melamine products. The best value is made available by selecting from the standard features listed below (default settings in the configurator).

Standard door

None

Standard Sizes

Width ranges 9" to 30"
Height ranges 18" to 42"
Depth ranges 9" to 30"

Standard features

Unfinished Sides – 3/8" white melamine
Finished Sides - 3/4" HPL exterior, white liner interior
Unfinished bottom - 3/8" white melamine
Unfinished top stretchers - 3/8" white melamine
Unfinished back – 1/2" white melamine (Dado in sides)
Unfinished shelves - None
Unfinished shelves – None
Drawer front – 3/8" HPL exterior, white liner interior
Cabinet edge band - .018 PVC
Drawer front edge band – .018 PVC or 3mm PVC
Drawer Box – 1/2" white melamine

Standard Hardware

Hinges – None
Drawer Slide – FR5000 Fullerter full extension ball bearing (100 lb.)
Pull – 4" satin chrome wire pull
Shelf Clips – None

Standard Options

Finished ends – 3/4" HPL exterior, white liner interior

Custom Options

Sub-Bases – 3/4" plywood construction (Cabinets have a flush bottom, sub-bases ordered separately)
Locks – Choice of lock and key options
Finished Interiors – 3/4" HPL interiors with either white liner exterior or matching HPL exteriors, determined by finished end selection.

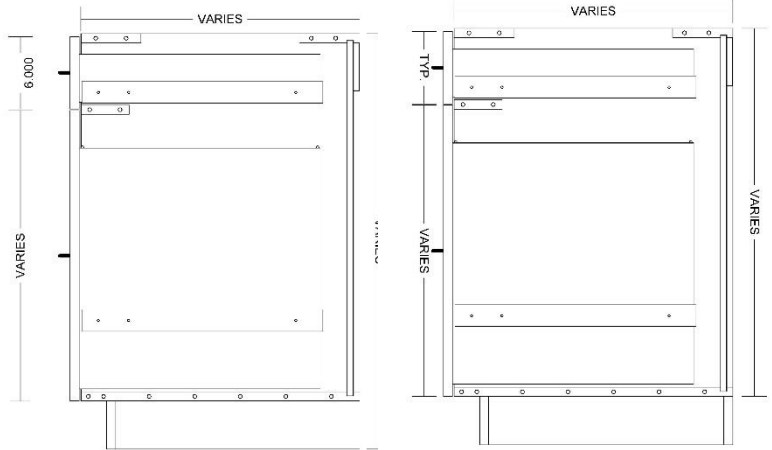
Accessory Options

See Accessory list which include Hardware, Components and Operations.

B0D2D-1



**Base 2 drawer cabinet,
Typical Top drawer front 6" high**



**TYPICAL: B0D2D-M
INTEGRAL AND LOOSE SUBBASE APPLICATIONS**

Laminate cabinets are available in a wide range of standard features and options. Additionally, custom configurations are possible. The website supports many of the features needed to quote and order commercial grade laminate or melamine products. The best value is made available by selecting from the standard features listed below (default settings in the configurator).

Standard door

None

Standard Sizes

Width ranges 9" to 30"
Height ranges 18" to 42"
Depth ranges 9" to 30"

Standard features

Unfinished Sides – 3/8" white melamine
Finished Sides - 3/4" HPL exterior, white liner interior
Unfinished bottom - 3/8" white melamine
Unfinished top stretchers - 3/8" white melamine
Unfinished back – 1/2" white melamine (Dado in sides)
Unfinished shelves - None
Unfinished shelves – None
Drawer front – 3/4" HPL exterior, white liner interior
Cabinet edge band - .018 PVC
Drawer front edge band – .018 PVC or 3mm PVC
Drawer Box – 1/2" white melamine

Standard Hardware

Hinges – None
Drawer Slide – FR5000 Fullerter full extension ball bearing (100 lb.)
Pull – 4" satin chrome wire pull
Shelf Clips – None

Standard Options

Finished ends – 3/4" HPL exterior, white liner interior

Custom Options

Sub-Bases – 3/4" plywood construction (Cabinets have a flush bottom, sub-bases ordered separately)
Locks – Choice of lock and key options
Finished Interiors – 3/4" HPL interiors with either white liner exterior or matching HPL exteriors, determined by finished end selection.

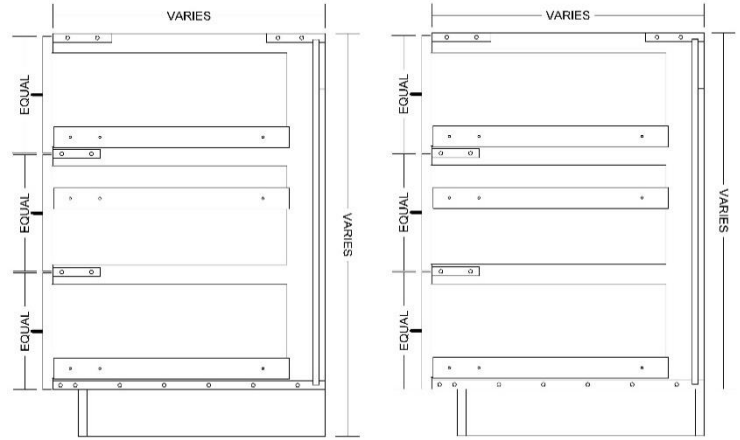
Accessory Options

See Accessory list which include Hardware, Components and Operations.

B0D3D



**Base 3 drawer cabinet
3 equals drawer fronts**



**TYPICAL: B0D3D-M
INTEGRAL AND LOOSE SUBBASE APPLICATIONS**

Laminate cabinets are available in a wide range of standard features and options. Additionally, custom configurations are possible. The website supports many of the features needed to quote and order commercial grade laminate or melamine products. The best value is made available by selecting from the standard features listed below (default settings in the configurator).

Standard door

None

Standard Sizes

Width ranges 9" to 30"
Height ranges 18" to 42"
Depth ranges 9" to 30"

Standard features

Unfinished Sides – ¾" white melamine
Finished Sides - ¾" HPL exterior, white liner interior
Unfinished bottom - ¾" white melamine
Unfinished top stretchers - ¾" white melamine
Unfinished back – ½" white melamine (Dado in sides)
Unfinished shelves - None
Unfinished shelves – None
Drawer front – ¾" HPL exterior, white liner interior
Cabinet edge band - .018 PVC
Drawer front edge band – .018 PVC or 3mm PVC
Drawer Box – ½" white melamine

Standard Hardware

Hinges – None
Drawer Slide – FR5000 Fullerer full extension ball bearing (100 lb.)
Pull – 4" satin chrome wire pull
Shelf Clips – None

Standard Options

Finished ends – ¾" HPL exterior, white liner interior

Custom Options

Sub-Bases – ¾" plywood construction (Cabinets have a flush bottom, sub-bases ordered separately)
Locks – Choice of lock and key options
Finished Interiors – ¾" HPL interiors with either white liner exterior or matching HPL exteriors, determined by finished end selection.

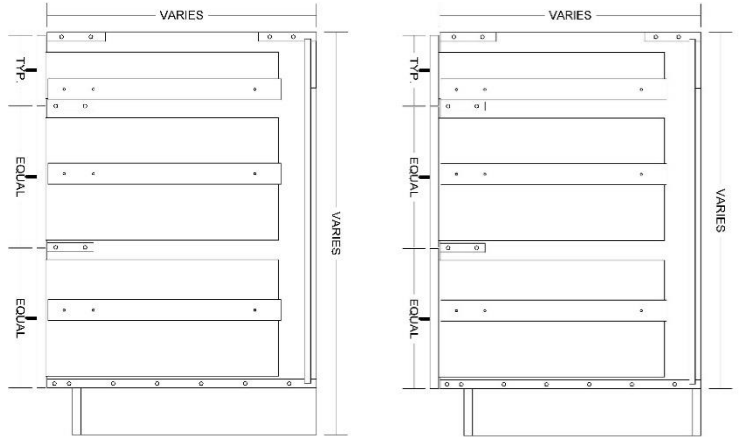
Accessory Options

See Accessory list which include Hardware, Components and Operations.

B0D3D-1



**Base 3 drawer cabinet,
Top drawer front 6"**



**TYPICAL: B0D3D-1-M
INTEGRAL AND LOOSE SUBBASE APPLICATIONS**

Laminate cabinets are available in a wide range of standard features and options. Additionally, custom configurations are possible. The website supports many of the features needed to quote and order commercial grade laminate or melamine products. The best value is made available by selecting from the standard features listed below (default settings in the configurator).

Standard door

None

Standard Sizes

Width ranges 9" to 30"
Height ranges 18" to 42"
Depth ranges 9" to 30"

Standard features

Unfinished Sides – 3/4" white melamine
Finished Sides - 3/4" HPL exterior, white liner interior
Unfinished bottom - 3/4" white melamine
Unfinished top stretchers - 3/4" white melamine
Unfinished back – 1/2" white melamine (Dado in sides)
Unfinished shelves - None
Unfinished shelves – None
Drawer front – 3/4" HPL exterior, white liner interior
Cabinet edge band - .018 PVC
Drawer front edge band – .018 PVC or 3mm PVC
Drawer Box – 1/2" white melamine

Standard Hardware

Hinges – None
Drawer Slide – FR5000 Fullterer full extension ball bearing (100 lb.)
Pull – 4" satin chrome wire pull
Shelf Clips – None

Standard Options

Finished ends – 3/4" HPL exterior, white liner interior

Custom Options

Sub-Bases – 3/4" plywood construction (Cabinets have a flush bottom, sub-bases ordered separately)
Locks – Choice of lock and key options
Finished Interiors – 3/4" HPL interiors with either white liner exterior or matching HPL exteriors, determined by finished end selection.

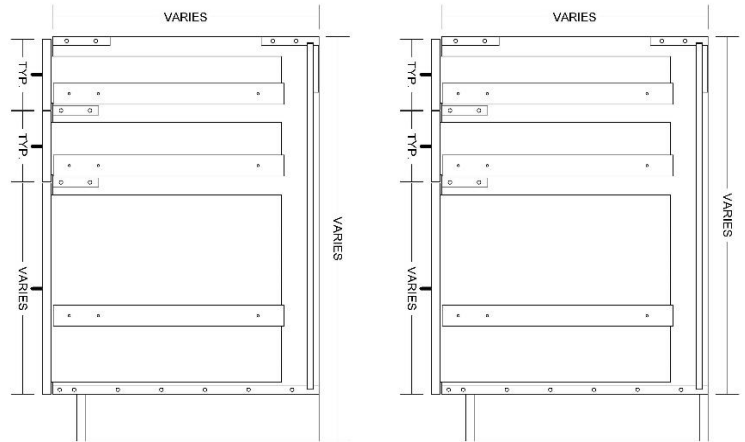
Accessory Options

See Accessory list which include Hardware, Components and Operations.

B0D3D-2



**Base 3 drawer cabinet,
Typical Top 2 drawer fronts 6" high**



**TYPICAL: B0D3D-2-M
INTEGRAL AND LOOSE SUBBASE APPLICATIONS**

Laminate cabinets are available in a wide range of standard features and options. Additionally, custom configurations are possible. The website supports many of the features needed to quote and order commercial grade laminate or melamine products. The best value is made available by selecting from the standard features listed below (default settings in the configurator).

Standard door

None

Standard Sizes

Width ranges 9" to 30"
Height ranges 18" to 42"
Depth ranges 9" to 30"

Standard features

Unfinished Sides – ¾" white melamine
Finished Sides - ¾" HPL exterior, white liner interior
Unfinished bottom - ¾" white melamine
Unfinished top stretchers - ¾" white melamine
Unfinished back – ½" white melamine (Dado in sides)
Unfinished shelves - None
Unfinished shelves – None
Drawer front – ¾" HPL exterior, white liner interior
Cabinet edge band - .018 PVC
Drawer front edge band – .018 PVC or 3mm PVC
Drawer Box – ½" white melamine

Standard Hardware

Hinges – None
Drawer Slide – FR5000 Fullerer full extension ball bearing (100 lb.)
Pull – 4" satin chrome wire pull
Shelf Clips – None

Standard Options

Finished ends – ¾" HPL exterior, white liner interior

Custom Options

Sub-Bases – ¾" plywood construction (Cabinets have a flush bottom, sub-bases ordered separately)
Locks – Choice of lock and key options
Finished Interiors – ¾" HPL interiors with either white liner exterior or matching HPL exteriors, determined by finished end selection.

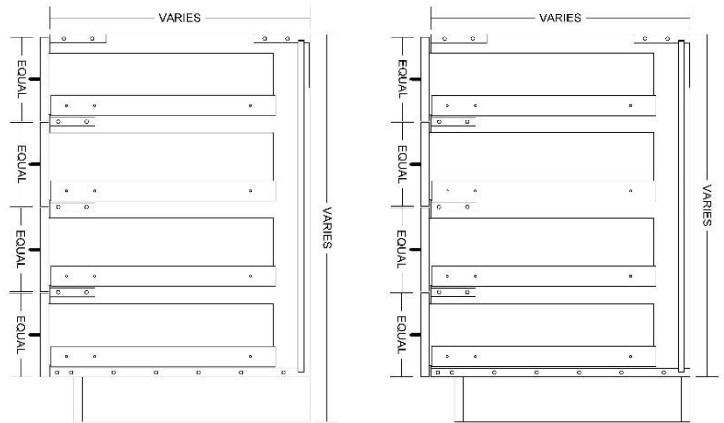
Accessory Options

See Accessory list which include Hardware, Components and Operations.

B0D4D



**Base 4 drawer cabinet
4 equal drawer fronts**



**TYPICAL: B0D4D-1-M
INTEGRAL AND LOOSE SUBBASE APPLICATIONS**

Laminate cabinets are available in a wide range of standard features and options. Additionally, custom configurations are possible. The website supports many of the features needed to quote and order commercial grade laminate or melamine products. The best value is made available by selecting from the standard features listed below (default settings in the configurator).

Standard door

None

Standard Sizes

Width ranges 9" to 30"
Height ranges 18" to 42"
Depth ranges 9" to 30"

Standard features

Unfinished Sides – 3/4" white melamine
Finished Sides - 3/4" HPL exterior, white liner interior
Unfinished bottom - 3/4" white melamine
Unfinished top stretchers - 3/4" white melamine
Unfinished back – 1/2" white melamine (Dado in sides)
Unfinished shelves - None
Unfinished shelves – None
Drawer front – 3/4" HPL exterior, white liner interior
Cabinet edge band - .018 PVC
Drawer front edge band – .018 PVC or 3mm PVC
Drawer Box – 1/2" white melamine

Standard Hardware

Hinges – None
Drawer Slide – FR5000 Fullterer full extension ball bearing (100 lb.)
Pull – 4" satin chrome wire pull
Shelf Clips – None

Standard Options

Finished ends – 3/4" HPL exterior, white liner interior

Custom Options

Sub-Bases – 3/4" plywood construction (Cabinets have a flush bottom, sub-bases ordered separately)
Locks – Choice of lock and key options
Finished Interiors – 3/4" HPL interiors with either white liner exterior or matching HPL exteriors, determined by finished end selection.

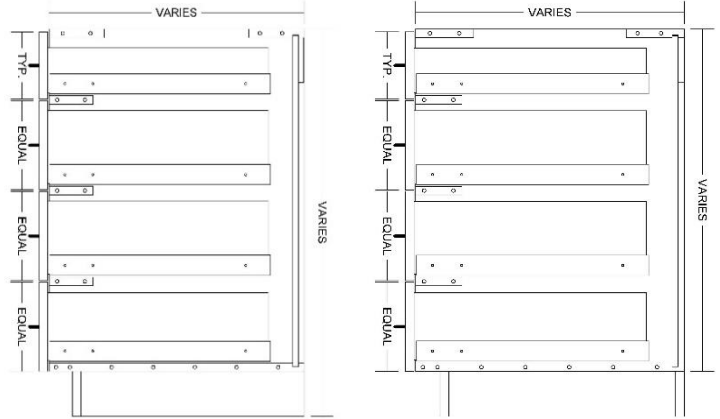
Accessory Options

See Accessory list which include Hardware, Components and Operations.

B0D4D-1



**Base 4 drawer cabinet,
Typical Top drawer front 6" high**



**TYPICAL: B0D4D-1-M
INTEGRAL AND LOOSE SUBBASE APPLICATIONS**

Laminate cabinets are available in a wide range of standard features and options. Additionally, custom configurations are possible. The website supports many of the features needed to quote and order commercial grade laminate or melamine products. The best value is made available by selecting from the standard features listed below (default settings in the configurator).

Standard door

None

Standard Sizes

Width ranges 9" to 30"
Height ranges 18" to 42"
Depth ranges 9" to 30"

Standard features

Unfinished Sides – 3/8" white melamine
Finished Sides - 3/4" HPL exterior, white liner interior
Unfinished bottom - 3/8" white melamine
Unfinished top stretchers - 3/8" white melamine
Unfinished back – 1/2" white melamine (Dado in sides)
Unfinished shelves - None
Unfinished shelves – None
Drawer front – 3/8" HPL exterior, white liner interior
Cabinet edge band - .018 PVC
Drawer front edge band – .018 PVC or 3mm PVC
Drawer Box – 1/2" white melamine

Standard Hardware

Hinges – None
Drawer Slide – FR5000 Fullterer full extension ball bearing (100 lb.)
Pull – 4" satin chrome wire pull
Shelf Clips – None

Standard Options

Finished ends – 3/4" HPL exterior, white liner interior

Custom Options

Sub-Bases – 3/4" plywood construction (Cabinets have a flush bottom, sub-bases ordered separately)
Locks – Choice of lock and key options
Finished Interiors – 3/4" HPL interiors with either white liner exterior or matching HPL exteriors, determined by finished end selection.

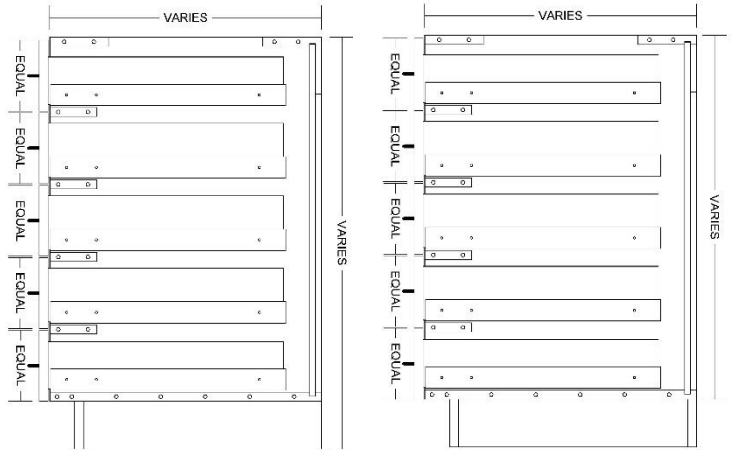
Accessory Options

See Accessory list which include Hardware, Components and Operations.

B0D5D



**Base 5 drawer cabinet
5 equal drawer fronts**



**TYPICAL: B0D5D-M
INTEGRAL AND LOOSE SUBBASE APPLICATIONS**

Laminate cabinets are available in a wide range of standard features and options. Additionally, custom configurations are possible. The website supports many of the features needed to quote and order commercial grade laminate or melamine products. The best value is made available by selecting from the standard features listed below (default settings in the configurator).

Standard door

None

Standard Sizes

Width ranges 9" to 30"
Height ranges 18" to 42"
Depth ranges 9" to 30"

Standard features

Unfinished Sides – 3/4" white melamine
Finished Sides - 3/4" HPL exterior, white liner interior
Unfinished bottom - 3/4" white melamine
Unfinished top stretchers - 3/4" white melamine
Unfinished back – 1/2" white melamine (Dado in sides)
Unfinished shelves - None
Unfinished shelves – None
Drawer front – 3/4" HPL exterior, white liner interior
Cabinet edge band - .018 PVC
Drawer front edge band – .018 PVC or 3mm PVC
Drawer Box – 1/2" white melamine

Standard Hardware

Hinges – None
Drawer Slide – FR5000 Fullterer full extension ball bearing (100 lb.)
Pull – 4" satin chrome wire pull
Shelf Clips – None

Standard Options

Finished ends – 3/4" HPL exterior, white liner interior

Custom Options

Sub-Bases – 3/4" plywood construction (Cabinets have a flush bottom, sub-bases ordered separately)
Locks – Choice of lock and key options
Finished Interiors – 3/4" HPL interiors with either white liner exterior or matching HPL exteriors, determined by finished end selection.

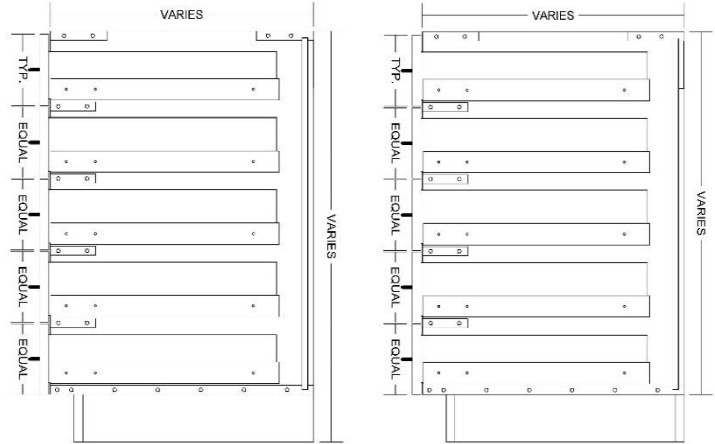
Accessory Options

See Accessory list which include Hardware, Components and Operations.

B0D5D-1



**Base 5 drawer cabinet,
Typical Top drawer front 6" high**



**TYPICAL: B0D5D-1-M
INTEGRAL AND LOOSE SUBBASE APPLICATIONS**

Laminate cabinets are available in a wide range of standard features and options. Additionally, custom configurations are possible. The website supports many of the features needed to quote and order commercial grade laminate or melamine products. The best value is made available by selecting from the standard features listed below (default settings in the configurator).

Standard door

None

Standard Sizes

Width ranges 9" to 30"
Height ranges 18" to 42"
Depth ranges 9" to 30"

Standard features

Unfinished Sides – 3/8" white melamine
Finished Sides - 3/4" HPL exterior, white liner interior
Unfinished bottom - 3/8" white melamine
Unfinished top stretchers - 3/8" white melamine
Unfinished back – 1/2" white melamine (Dado in sides)
Unfinished shelves - None
Unfinished shelves – None
Drawer front – 3/8" HPL exterior, white liner interior
Cabinet edge band - .018 PVC
Drawer front edge band – .018 PVC or 3mm PVC
Drawer Box – 1/2" white melamine

Standard Hardware

Hinges – None
Drawer Slide – FR5000 Fullterer full extension ball bearing (100 lb.)
Pull – 4" satin chrome wire pull
Shelf Clips – None

Standard Options

Finished ends – 3/4" HPL exterior, white liner interior

Custom Options

Sub-Bases – 3/4" plywood construction (Cabinets have a flush bottom, sub-bases ordered separately)
Locks – Choice of lock and key options
Finished Interiors – 3/4" HPL interiors with either white liner exterior or matching HPL exteriors, determined by finished end selection.

Accessory Options

See Accessory list which include Hardware, Components and Operations.

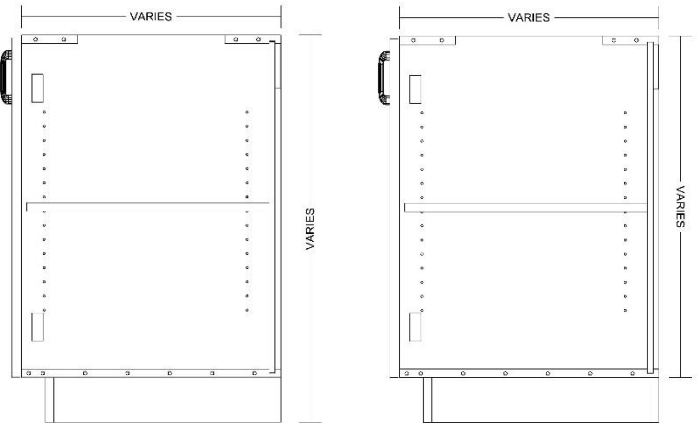
B1DL / B1DR



Left Hand Hinge

Right Hand Hinge

Base 1 door cabinet



TYPICAL: B1DL-1AS-M

B1DR-1AS-M

INTEGRAL AND LOOSE SUBBASE APPLICATIONS

Laminate cabinets are available in a wide range of standard features and options. Additionally, custom configurations are possible. The website supports many of the features needed to quote and order commercial grade laminate or melamine products. The best value is made available by selecting from the standard features listed below (default settings in the configurator).

Standard door

Left hand hinge
Right hand hinge

Standard Sizes

Width ranges 9" to 24"
Height ranges 18" to 42"
Depth ranges 9" to 30"

Standard features

Unfinished Sides – 3/4" white melamine
Finished Sides - 3/4" HPL exterior, white liner interior
Unfinished bottom - 3/4" white melamine
Unfinished top stretchers - 3/4" white melamine
Unfinished back – 1/2" white melamine (Dado in sides)
Unfinished shelves - 3/4" white melamine (Less than 27" wide)
Unfinished shelves – 1" white melamine (27" and wider)
Doors – 3/4" HPL exterior, white liner interior
Cabinet edge band - .018 PVC
Door edge band – .018 PVC or 3mm PVC

Standard Hardware

Hinges – 120-degree Blum Hinge
Pull – 4" satin chrome wire pull
Shelf Clips – 5mm metal spoon

Standard Options

Finished ends – 3/4" HPL exterior, white liner interior

Custom Options

Sub-Bases – 3/4" plywood construction (Cabinets have a flush bottom, sub-bases ordered separately)
Locks – Choice of lock and key options
Finished Interiors – 3/4" HPL interiors with either white liner exterior or matching HPL exteriors, determined by finished end selection.

Accessory Options

See Accessory list which include Hardware, Components and Operations.

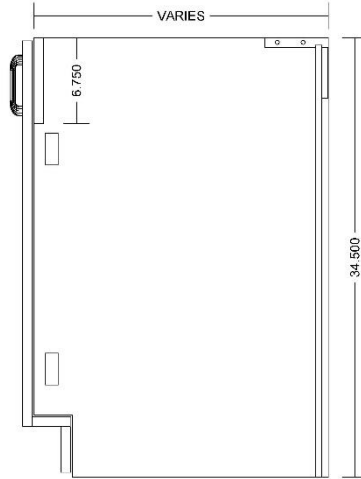
SB1DL-ATK / SB1DR-ATK



Left Hand Hinge

Right Hand Hinge

**Base 1 door cabinet
with false front behind door, no
bottom, attach toe kick**



**TYPICAL: SB1DL-ATK-M
SB1DR-ATK-M**

Laminate cabinets are available in a wide range of standard features and options. Additionally, custom configurations are possible. The website supports many of the features needed to quote and order commercial grade laminate or melamine products. The best value is made available by selecting from the standard features listed below (default settings in the configurator).

Standard door

Left hand hinge
Right hand hinge

Standard Sizes

Width ranges 9" to 24"
Height ranges 18" to 42"
Depth ranges 9" to 30"

Standard features

Unfinished Sides – 3/4" white melamine
Finished Sides - 3/4" HPL exterior, white liner interior
Unfinished bottom - None
Unfinished top stretchers - 3/4" white melamine
Unfinished back – 1/2" white melamine (Dado in sides)
Unfinished shelves - 3/4" white melamine (Less than 27" wide)
Unfinished shelves – 1" white melamine (27" and wider)
Doors – 3/4" HPL exterior, white liner interior
Cabinet edge band - .018 PVC
Door edge band – .018 PVC or 3mm PVC

Standard Hardware

Hinges – 120-degree Blum Hinge
Pull – 4" satin chrome wire pull
Shelf Clips – 5mm metal spoon

Standard Options

Finished ends – 3/4" HPL exterior, white liner interior

Custom Options

Sub-Bases – None
Locks – Choice of lock and key options
Finished Interiors – 3/4" HPL interiors with either white liner exterior or matching HPL exteriors, determined by finished end selection.

Accessory Options

See Accessory list which include Hardware, Components and Operations.

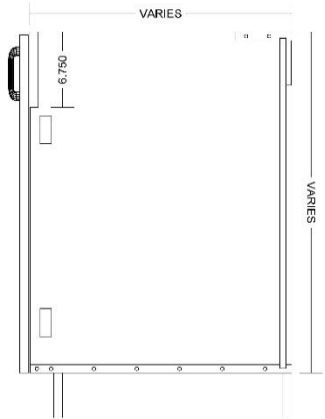
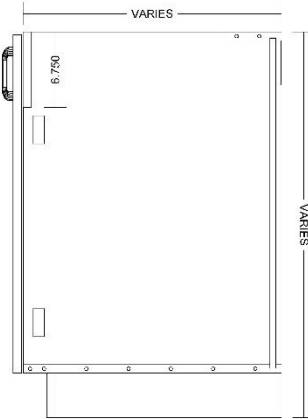
SB1DL / SB1DR



Left Hand Hinge

Right Hand Hinge

**Base 1 door cabinet
with false front behind door**



**TYPICAL: SB1DL-0AS-M
SB1DR-0AS-M**

INTEGRAL AND LOOSE SUBBASE APPLICATIONS

Laminate cabinets are available in a wide range of standard features and options. Additionally, custom configurations are possible. The website supports many of the features needed to quote and order commercial grade laminate or melamine products. The best value is made available by selecting from the standard features listed below (default settings in the configurator).

Standard door

Left hand hinge
Right hand hinge

Standard Sizes

Width ranges 9" to 24"
Height ranges 18" to 42"
Depth ranges 9" to 30"

Standard features

Unfinished Sides – 3/4" white melamine
Finished Sides - 3/4" HPL exterior, white liner interior
Unfinished bottom - 3/4" white melamine
Unfinished top stretchers - 3/4" white melamine
Unfinished back – 1/2" white melamine (Dado in sides)
Unfinished shelves - 3/4" white melamine (Less than 27" wide)
Unfinished shelves – 1" white melamine (27" and wider)
Doors – 3/4" HPL exterior, white liner interior
Cabinet edge band - .018 PVC
Door edge band – .018 PVC or 3mm PVC

Standard Hardware

Hinges – 120-degree Blum Hinge
Pull – 4" satin chrome wire pull
Shelf Clips – 5mm metal spoon

Standard Options

Finished ends – 3/4" HPL exterior, white liner interior

Custom Options

Sub-Bases – 3/4" plywood construction (Cabinets have a flush bottom, sub-bases ordered separately)
Locks – Choice of lock and key options
Finished Interiors – 3/4" HPL interiors with either white liner exterior or matching HPL exteriors, determined by finished end selection.

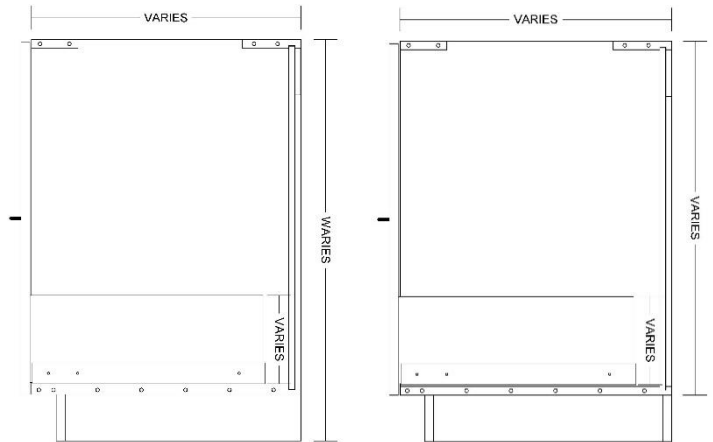
Accessory Options

See Accessory list which include Hardware, Components and Operations.

BOD1D-TRASH



**Base 1 drawer cabinet,
Trash Bin behind door**



**TYPICAL: BOD1D-M-TRASH
INTEGRAL AND LOOSE SUB-BASE APPLICATIONS**

Laminate cabinets are available in a wide range of standard features and options. Additionally, custom configurations are possible. The website supports many of the features needed to quote and order commercial grade laminate or melamine products. The best value is made available by selecting from the standard features listed below (default settings in the configurator).

Standard door

None

Standard Sizes

Width ranges 9" to 30"
Height ranges 18" to 42"
Depth ranges 9" to 30"

Standard features

Unfinished Sides – ¾" white melamine
Finished Sides - ¾" HPL exterior, white liner interior
Unfinished bottom - ¾" white melamine
Unfinished top stretchers - ¾" white melamine
Unfinished back – ½" white melamine (Dado in sides)
Unfinished shelves - None
Unfinished shelves – None
Drawer front – ¾" HPL exterior, white liner interior
Cabinet edge band - .018 PVC
Drawer front edge band – .018 PVC or 3mm PVC
Drawer Box – ½" white melamine

Standard Hardware

Hinges – None
Drawer Slide – FR5000 Fullerer full extension ball bearing (100 lb.)
Pull – 4" satin chrome wire pull
Shelf Clips – None
15 Quart Plastic Trash Bin (White)

Standard Options

Finished ends – ¾" HPL exterior, white liner interior

Custom Options

Sub-Bases – ¾" plywood construction (Cabinets have a flush bottom, sub-bases ordered separately)
Locks – Choice of lock and key options
Finished Interiors – ¾" HPL interiors with either white liner exterior or matching HPL exteriors, determined by finished end selection.

Accessory Options

See Accessory list which include Hardware, Components and Operations.

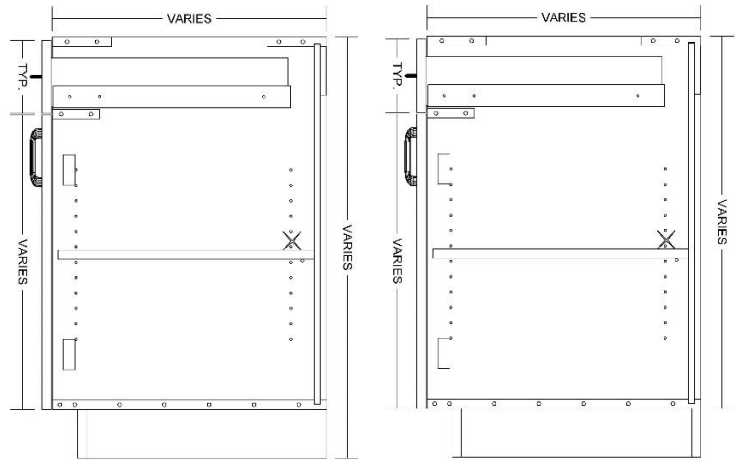
B1D1DL / B1D1DR



Left Hand Hinge

Right Hand Hinge

Base 1 door, 1 drawer cabinet
Typical top drawer front 6" high



TYPICAL: B1D1DL-1AS-M
B1DR1R-1AS-M

INTEGRAL AND LOOSE SUBBASE APPLICATIONS

Laminate cabinets are available in a wide range of standard features and options. Additionally, custom configurations are possible. The website supports many of the features needed to quote and order commercial grade laminate or melamine products. The best value is made available by selecting from the standard features listed below (default settings in the configurator).

Standard door

Left hand hinge
Right hand hinge

Standard Sizes

Width ranges 9" to 24"
Height ranges 18" to 42"
Depth ranges 9" to 30"

Standard features

Unfinished Sides – ¾" white melamine
Finished Sides - ¾" HPL exterior, white liner interior
Unfinished bottom - ¾" white melamine
Unfinished top stretchers - ¾" white melamine
Unfinished back – ½" white melamine (Dado in sides)
Unfinished shelves - ¾" white melamine (Less than 27" wide)
Unfinished shelves – 1" white melamine (27" and wider)
Door and Drawer front – ¾" HPL exterior, white liner interior
Cabinet edge band - .018 PVC
Door and Drawer front edge band – .018 PVC or 3mm PVC
Drawer Box – ½" white melamine

Standard Hardware

Hinges – 120-degree Blum Hinge
Drawer Slide – FR5000 Fulter full extension ball bearing (100 lb.)
Pull – 4" satin chrome wire pull
Shelf Clips – 5mm metal spoon

Standard Options

Finished ends – ¾" HPL exterior, white liner interior

Custom Options

Sub-Bases – ¾" plywood construction (Cabinets have a flush bottom, sub-bases ordered separately)
Locks – Choice of lock and key options
Finished Interiors – ¾" HPL interiors with either white liner exterior or matching HPL exteriors, determined by finished end selection.

Accessory Options

See Accessory list which include Hardware, Components and Operations.

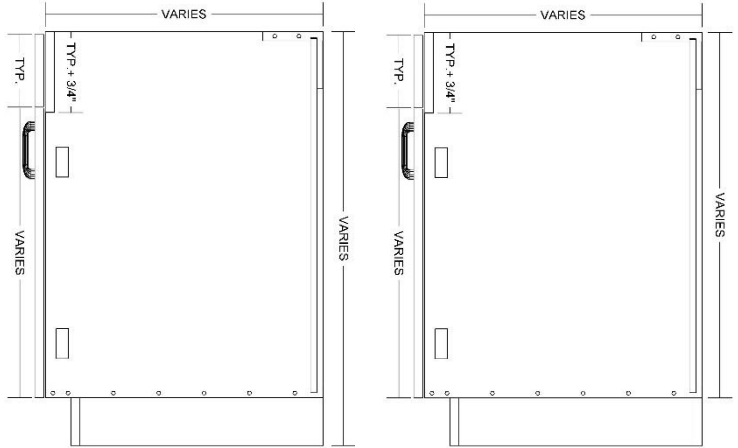
SB1D1FL / SB1D1FR



Left Hand Hinge

Right Hand Hinge

**Base 1 door, 1 false front cabinet
Typical top false front 6" high**



**TYPICAL: SB1D1FL-0AS-M
SB1DR1F-0AS-M**

INTEGRAL AND LOOSE SUBBASE APPLICATIONS

Laminate cabinets are available in a wide range of standard features and options. Additionally, custom configurations are possible. The website supports many of the features needed to quote and order commercial grade laminate or melamine products. The best value is made available by selecting from the standard features listed below (default settings in the configurator).

Standard door

- Left hand hinge
- Right hand hinge

Standard Sizes

- Width ranges 9" to 24"
- Height ranges 18" to 42"
- Depth ranges 9" to 30"

Standard features

- Unfinished Sides – 3/8" white melamine
- Finished Sides - 3/4" HPL exterior, white liner interior
- Unfinished bottom - 3/8" white melamine
- Unfinished top stretchers - 3/8" white melamine
- Unfinished back – 1/2" white melamine (Dado in sides)
- Unfinished shelves - 3/8" white melamine (Less than 27" wide)
- Unfinished shelves – 1" white melamine (27" and wider)
- Doors – 3/4" HPL exterior, white liner interior
- Cabinet edge band - .018 PVC
- Door edge band – .018 PVC or 3mm PVC

Standard Hardware

- Hinges – 120-degree Blum Hinge
- Pull – 4" satin chrome wire pull
- Shelf Clips – 5mm metal spoon

Standard Options

- Finished ends – 3/4" HPL exterior, white liner interior

Custom Options

- Sub-Bases – 3/8" plywood construction (Cabinets have a flush bottom, sub-bases ordered separately)
- Locks – Choice of lock and key options
- Finished Interiors – 3/4" HPL interiors with either white liner exterior or matching HPL exteriors, determined by finished end selection.

Accessory Options

- See Accessory list which include Hardware, Components and Operations.

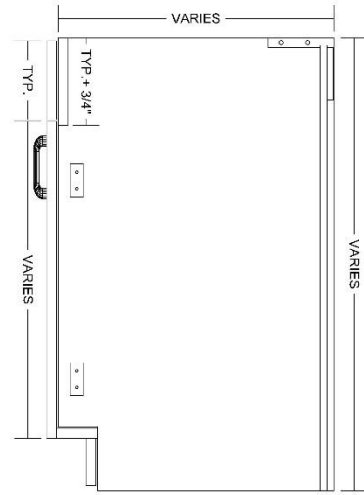
SB1D1FL-ATK/SB1D1FR-ATK



Left Hand Hinge

Right Hand Hinge

**Base 1 door, 1 false front cabinet,
no bottom, attach toe kick
Typical top false front 6" high**



**TYPICAL: SB1D1FL-ATK-M
SB1D1FR-ATK-M**

Laminate cabinets are available in a wide range of standard features and options. Additionally, custom configurations are possible. The website supports many of the features needed to quote and order commercial grade laminate or melamine products. The best value is made available by selecting from the standard features listed below (default settings in the configurator).

Standard door

Left hand hinge
Right hand hinge

Standard Sizes

Width ranges 9" to 24"
Height ranges 18" to 42"
Depth ranges 9" to 30"

Standard features

Unfinished Sides – 3/4" white melamine
Finished Sides - 3/4" HPL exterior, white liner interior
Unfinished bottom - None
Unfinished top stretchers - 3/4" white melamine
Unfinished back – 1/2" white melamine (Dado in sides)
Unfinished shelves - 3/4" white melamine (Less than 27" wide)
Unfinished shelves – 1" white melamine (27" and wider)
Doors – 3/4" HPL exterior, white liner interior
Cabinet edge band - .018 PVC
Door edge band – .018 PVC or 3mm PVC

Standard Hardware

Hinges – 120-degree Blum Hinge
Pull – 4" satin chrome wire pull
Shelf Clips – 5mm metal spoon

Standard Options

Finished ends – 3/4" HPL exterior, white liner interior

Custom Options

Sub-Bases – None
Locks – Choice of lock and key options
Finished Interiors – 3/4" HPL interiors with either white liner exterior or matching HPL exteriors, determined by finished end selection.

Accessory Options

See Accessory list which include Hardware, Components and Operations.

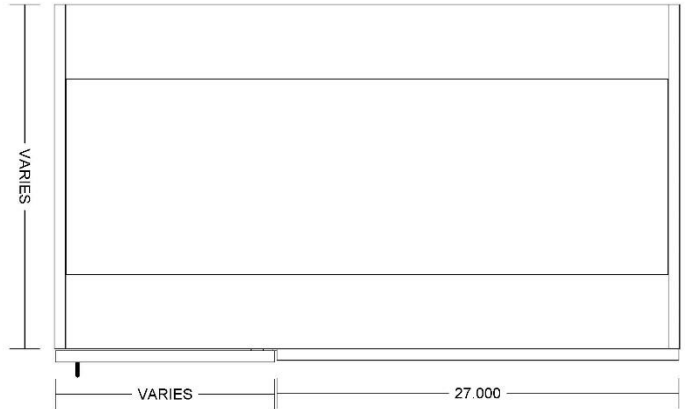
B1DL-BLD / B1DR-BLD



Left Hand Hinge

Right Hand Hinge

**Base 1 door cabinet
With fixed panel for corner
applications**



**TYPICAL: B1DL-BLD-1AS-M
B1DR-BLD-1AS-M**

Laminate cabinets are available in a wide range of standard features and options. Additionally, custom configurations are possible. The website supports many of the features needed to quote and order commercial grade laminate or melamine products. The best value is made available by selecting from the standard features listed below (default settings in the configurator).

Standard door

Left hand hinge
Right hand hinge

Standard Sizes

Width ranges 24" to 45"
Height ranges 18" to 42"
Depth ranges 9" to 30"

Standard features

Unfinished Sides – ¾" white melamine
Finished Sides - ¾" HPL exterior, white liner interior
Unfinished bottom - ¾" white melamine
Unfinished top stretchers - ¾" white melamine
Unfinished back – ½" white melamine (Dado in sides)
Unfinished shelves - ¾" white melamine (Less than 27" wide)
Unfinished shelves – 1" white melamine (27" and wider)
Doors – ¾" HPL exterior, white liner interior
Cabinet edge band - .018 PVC
Door edge band – .018 PVC or 3mm PVC

Standard Hardware

Hinges – 120-degree Blum Hinge (Blind cabinet hinge)
Pull – 4" satin chrome wire pull
Shelf Clips – 5mm metal spoon

Standard Options

Finished ends – ¾" HPL exterior, white liner interior

Custom Options

Sub-Bases – ¾" plywood construction (Cabinets have a flush bottom, sub-bases ordered separately)
Locks – Choice of lock and key options
Finished Interiors – ¾" HPL interiors with either white liner exterior or matching HPL exteriors, determined by finished end selection.

Accessory Options

See Accessory list which include Hardware, Components and Operations.

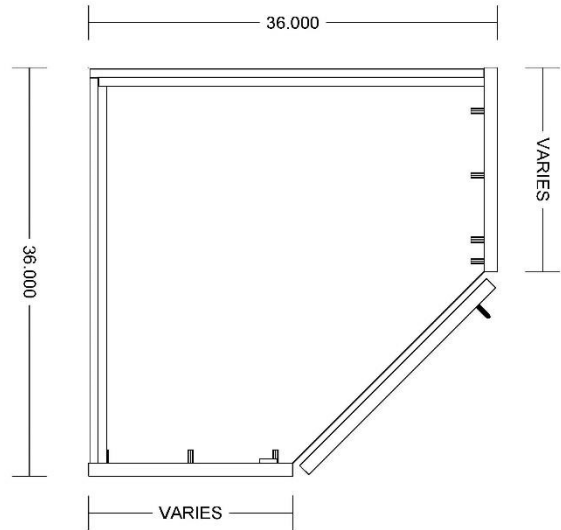
B1DL-CRN / B1DR-CRN



Left Hand Hinge

Right Hand Hinge

**Base single door cabinet with
45-degree door
for corner application**



**TYPICAL: B1DL-CRN-1AS-M
B1DR-CRN-1AS-M**

Laminate cabinets are available in a wide range of standard features and options. Additionally, custom configurations are possible. The website supports many of the features needed to quote and order commercial grade laminate or melamine products. The best value is made available by selecting from the standard features listed below (default settings in the configurator).

Standard door

- Left hand hinge
- Right hand hinge

Standard Sizes

- Width ranges 24" to 45"
- Height ranges 18" to 42"
- Depth ranges 9" to 30"

Standard features

- Unfinished Sides – ¾" white melamine
- Finished Sides - ¾" HPL exterior, white liner interior
- Unfinished bottom - ¾" white melamine
- Unfinished top stretchers - ¾" white melamine
- Unfinished back – ½" white melamine (Dado in sides)
- Unfinished shelves - ¾" white melamine (Less than 27" wide)
- Unfinished shelves – 1" white melamine (27" and wider)
- Doors – ¾" HPL exterior, white liner interior
- Cabinet edge band - .018 PVC
- Door edge band – .018 PVC or 3mm PVC

Standard Hardware

- Hinges – 120-degree Blum Hinge (Blind cabinet hinge)
- Pull – 4" satin chrome wire pull
- Shelf Clips – 5mm metal spoon

Standard Options

- Finished ends – ¾" HPL exterior, white liner interior

Custom Options

- Sub-Bases – ¾" plywood construction (Cabinets have a flush bottom, sub-bases ordered separately)
- Locks – Choice of lock and key options
- Finished Interiors – ¾" HPL interiors with either white liner exterior or matching HPL exteriors, determined by finished end selection.

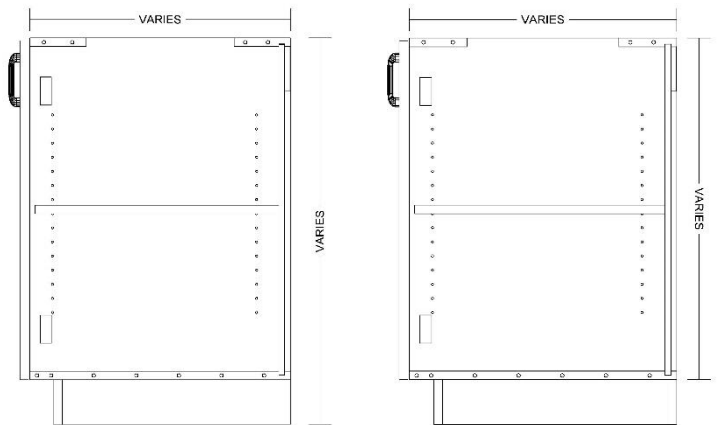
Accessory Options

- See Accessory list which include Hardware, Components and Operations.

B2D



Base 2 door cabinet



**TYPICAL: B2D-1AS-M
INTEGRAL AND LOOSE SUBBASE APPLICATIONS**

Laminate cabinets are available in a wide range of standard features and options. Additionally, custom configurations are possible. The website supports many of the features needed to quote and order commercial grade laminate or melamine products. The best value is made available by selecting from the standard features listed below (default settings in the configurator).

Standard door

Pair Hinges

Standard Sizes

Width ranges 18" to 39"
Height ranges 18" to 42"
Depth ranges 9" to 30"

Standard features

Unfinished Sides – ¾" white melamine
Finished Sides - ¾" HPL exterior, white liner interior
Unfinished bottom - ¾" white melamine
Unfinished top stretchers - ¾" white melamine
Unfinished back – ½" white melamine (Dado in sides)
Unfinished shelves - ¾" white melamine (Less than 27" wide)
Unfinished shelves – 1" white melamine (27" and wider)
Doors – ¾" HPL exterior, white liner interior
Cabinet edge band - .018 PVC
Door edge band – .018 PVC or 3mm PVC

Standard Hardware

Hinges – 120-degree Blum Hinge
Pull – 4" satin chrome wire pull
Shelf Clips – 5mm metal spoon

Standard Options

Finished ends – ¾" HPL exterior, white liner interior

Custom Options

Sub-Bases – ¾" plywood construction (Cabinets have a flush bottom, sub-bases ordered separately)
Locks – Choice of lock and key options
Finished Interiors – ¾" HPL interiors with either white liner exterior or matching HPL exteriors, determined by finished end selection.

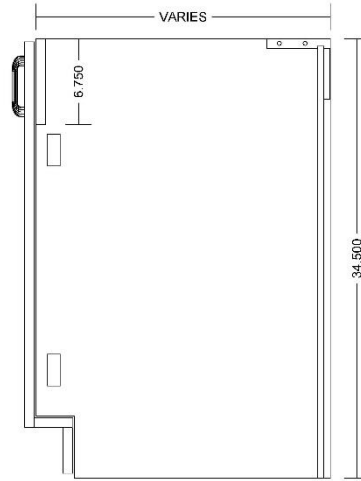
Accessory Options

See Accessory list which include Hardware, Components and Operations.

B2D-ATK



**Base 2 door cabinet
with false front behind door, no
bottom, attach toe kick**



TYPICAL: SB2D-ATK-M

Laminate cabinets are available in a wide range of standard features and options. Additionally, custom configurations are possible. The website supports many of the features needed to quote and order commercial grade laminate or melamine products. The best value is made available by selecting from the standard features listed below (default settings in the configurator).

Standard door

Pair Hinges

Standard Sizes

Width ranges 18" to 39"
Height ranges 18" to 42"
Depth ranges 9" to 30"

Standard features

Unfinished Sides – ¾" white melamine
Finished Sides - ¾" HPL exterior, white liner interior
Unfinished bottom - None
Unfinished top stretchers - ¾" white melamine
Unfinished back – ½" white melamine (Dado in sides)
Unfinished shelves - ¾" white melamine (Less than 27" wide)
Unfinished shelves – 1" white melamine (27" and wider)
Doors – ¾" HPL exterior, white liner interior
Cabinet edge band - .018 PVC
Door edge band – .018 PVC or 3mm PVC

Standard Hardware

Hinges – 120-degree Blum Hinge
Pull – 4" satin chrome wire pull
Shelf Clips – 5mm metal spoon

Standard Options

Finished ends – ¾" HPL exterior, white liner interior

Custom Options

Sub-Bases – None
Locks – Choice of lock and key options
Finished Interiors – ¾" HPL interiors with either white liner exterior or matching HPL exteriors, determined by finished end selection.

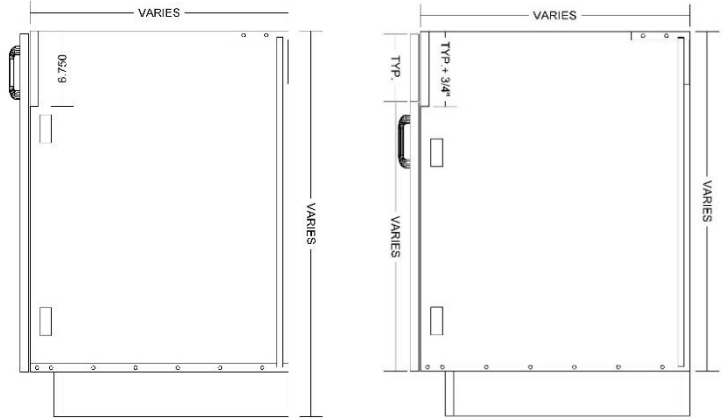
Accessory Options

See Accessory list which include Hardware, Components and Operations.

SB2D



**Base 2 door cabinet
with false front behind door**



**TYPICAL: SB2D-0AS-M
INTEGRAL AND LOOSE SUBBASE APPLICATIONS**

Laminate cabinets are available in a wide range of standard features and options. Additionally, custom configurations are possible. The website supports many of the features needed to quote and order commercial grade laminate or melamine products. The best value is made available by selecting from the standard features listed below (default settings in the configurator).

Standard door

Pair Hinges

Standard Sizes

Width ranges 18" to 39"
Height ranges 18" to 42"
Depth ranges 9" to 30"

Standard features

Unfinished Sides – 3/4" white melamine
Finished Sides - 3/4" HPL exterior, white liner interior
Unfinished bottom - 3/4" white melamine
Unfinished top stretchers - 3/4" white melamine
Unfinished back – 1/2" white melamine (Dado in sides)
Unfinished shelves - 3/4" white melamine (Less than 27" wide)
Unfinished shelves – 1" white melamine (27" and wider)
Doors – 3/4" HPL exterior, white liner interior
Cabinet edge band - .018 PVC
Door edge band – .018 PVC or 3mm PVC

Standard Hardware

Hinges – 120-degree Blum Hinge
Pull – 4" satin chrome wire pull
Shelf Clips – 5mm metal spoon

Standard Options

Finished ends – 3/4" HPL exterior, white liner interior

Custom Options

Sub-Bases – 3/4" plywood construction (Cabinets have a flush bottom, sub-bases ordered separately)
Locks – Choice of lock and key options
Finished Interiors – 3/4" HPL interiors with either white liner exterior or matching HPL exteriors, determined by finished end selection.

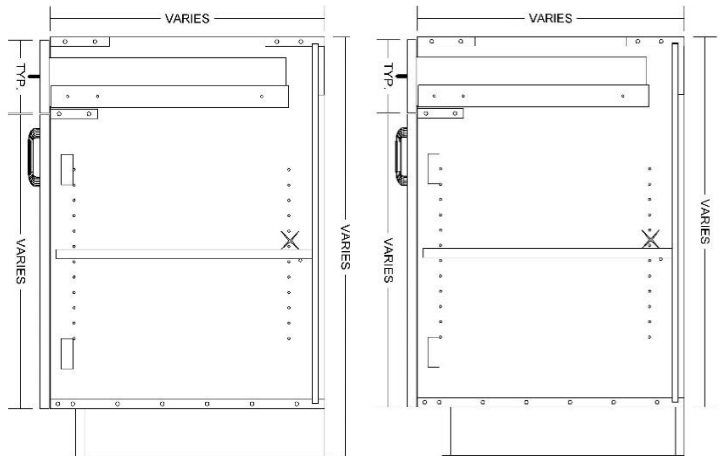
Accessory Options

See Accessory list which include Hardware, Components and Operations.

B2D1D



Base 2 door, 1 drawer cabinet
Typical Top drawer front 6" high



TYPICAL: B2D1D-1AS-M
INTEGRAL AND LOOSE SUBBASE APPLICATIONS

Laminate cabinets are available in a wide range of standard features and options. Additionally, custom configurations are possible. The website supports many of the features needed to quote and order commercial grade laminate or melamine products. The best value is made available by selecting from the standard features listed below (default settings in the configurator).

Standard door

Pair Hinges

Standard Sizes

Width ranges 18" to 39"
Height ranges 18" to 42"
Depth ranges 9" to 30"

Standard features

Unfinished Sides – ¾" white melamine
Finished Sides - ¾" HPL exterior, white liner interior
Unfinished bottom - ¾" white melamine
Unfinished top stretchers - ¾" white melamine
Unfinished back – ½" white melamine (Dado in sides)
Unfinished shelves - ¾" white melamine (Less than 27" wide)
Unfinished shelves – 1" white melamine (27" and wider)
Doors and Drawer front – ¾" HPL exterior, white liner interior
Cabinet edge band - .018 PVC
Door and Drawer front edge band – .018 PVC or 3mm PVC
Drawer Box – ½" white melamine

Standard Hardware

Hinges – 120-degree Blum Hinge
Drawer Slide – FR5000 Fuller full extension ball bearing (100 lb.)
Pull – 4" satin chrome wire pull
Shelf Clips – 5mm metal spoon

Standard Options

Finished ends – ¾" HPL exterior, white liner interior

Custom Options

Sub-Bases – ¾" plywood construction (Cabinets have a flush bottom, sub-bases ordered separately)
Locks – Choice of lock and key options
Finished Interiors – ¾" HPL interiors with either white liner exterior or matching HPL exteriors, determined by finished end selection.

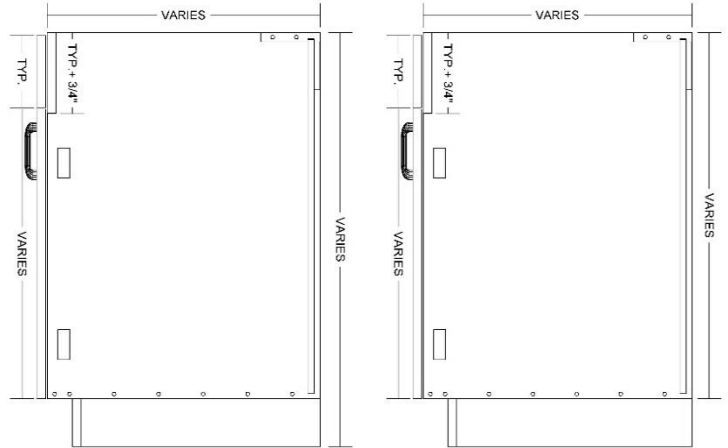
Accessory Options

See Accessory list which include Hardware, Components and Operations.

SB2D1F



Base 2 doors, 1 false front cabinet
Typical Top false front 6" high



TYPICAL: SB2D2F-M
INTEGRAL AND LOOSE SUBBASE APPLICATIONS

Laminate cabinets are available in a wide range of standard features and options. Additionally, custom configurations are possible. The website supports many of the features needed to quote and order commercial grade laminate or melamine products. The best value is made available by selecting from the standard features listed below (default settings in the configurator).

Standard door

Pair Hinges

Standard Sizes

Width ranges 18" to 39"
Height ranges 18" to 42"
Depth ranges 9" to 30"

Standard features

Unfinished Sides – 3/4" white melamine
Finished Sides - 3/4" HPL exterior, white liner interior
Unfinished bottom - 3/4" white melamine
Unfinished top stretchers - 3/4" white melamine
Unfinished back – 1/2" white melamine (Dado in sides)
Unfinished shelves - 3/4" white melamine (Less than 27" wide)
Unfinished shelves – 1" white melamine (27" and wider)
Doors and Drawer front – 3/4" HPL exterior, white liner interior
Cabinet edge band - .018 PVC
Door and Drawer front edge band – .018 PVC or 3mm PVC

Standard Hardware

Hinges – 120-degree Blum Hinge
Pull – 4" satin chrome wire pull
Shelf Clips – 5mm metal spoon

Standard Options

Finished ends – 3/4" HPL exterior, white liner interior

Custom Options

Sub-Bases – 3/4" plywood construction (Cabinets have a flush bottom, sub-bases ordered separately)
Locks – Choice of lock and key options
Finished Interiors – 3/4" HPL interiors with either white liner exterior or matching HPL exteriors, determined by finished end selection.

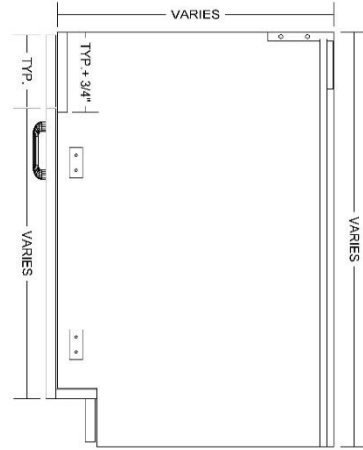
Accessory Options

See Accessory list which include Hardware, Components and Operations.

SB2D1F-ATK



**Base 2 doors, 1 false front cabinet,
Toe Kicks attached to back of doors
Typical Top false front 6" high**



**TYPICAL: SB2D1F-ATK-M
INTEGRAL AND LOOSE SUBBASE APPLICATIONS**

Laminate cabinets are available in a wide range of standard features and options. Additionally, custom configurations are possible. The website supports many of the features needed to quote and order commercial grade laminate or melamine products. The best value is made available by selecting from the standard features listed below (default settings in the configurator).

Standard door

Pair Hinges

Standard Sizes

Width ranges 18" to 39"
Height ranges 18" to 42"
Depth ranges 9" to 30"

Standard features

Unfinished Sides – 3/4" white melamine
Finished Sides - 3/4" HPL exterior, white liner interior
No bottom – Toe Kick attached to back of doors
Unfinished top stretchers - 3/4" white melamine
Unfinished back – 1/2" white melamine (Dado in sides)
Unfinished shelves - 3/4" white melamine (Less than 27" wide)
Unfinished shelves – 1" white melamine (27" and wider)
Doors and Drawer front – 3/4" HPL exterior, white liner interior
Cabinet edge band - .018 PVC
Door and Drawer front edge band – .018 PVC or 3mm PVC

Standard Hardware

Hinges – 120-degree Blum Hinge
Pull – 4" satin chrome wire pull
Shelf Clips – 5mm metal spoon

Standard Options

Finished ends – 3/4" HPL exterior, white liner interior

Custom Options

Sub-Bases – 3/4" plywood construction (Cabinets have a flush bottom, sub-bases ordered separately)
Locks – Choice of lock and key options
Finished Interiors – 3/4" HPL interiors with either white liner exterior or matching HPL exteriors, determined by finished end selection.

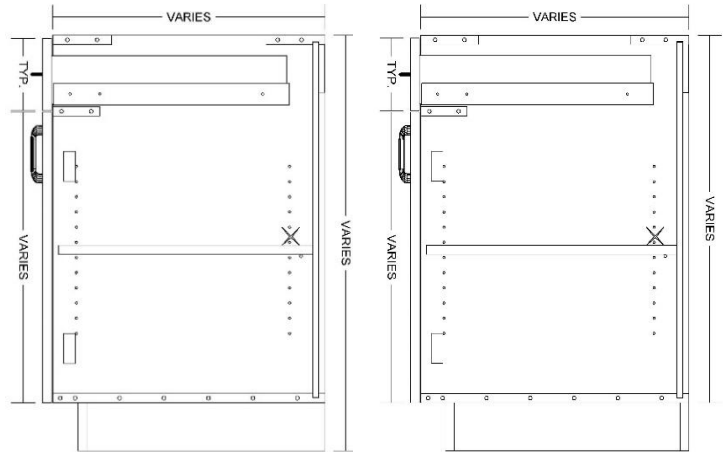
Accessory Options

See Accessory list which include Hardware, Components and Operations.

B2D2D



Base 2 doors, 2 drawers cabinet
Typical Top drawer front 6" high



TYPICAL: B2D2D-1AS-M
INTEGRAL AND LOOSE SUBBASE APPLICATIONS

Laminate cabinets are available in a wide range of standard features and options. Additionally, custom configurations are possible. The website supports many of the features needed to quote and order commercial grade laminate or melamine products. The best value is made available by selecting from the standard features listed below (default settings in the configurator).

Standard door

Pair Hinges

Standard Sizes

Width ranges 18" to 39"
Height ranges 18" to 42"
Depth ranges 9" to 30"

Standard features

Unfinished Sides – ¾" white melamine
Finished Sides - ¾" HPL exterior, white liner interior
Unfinished bottom - ¾" white melamine
Unfinished top stretchers - ¾" white melamine
Unfinished back – ½" white melamine (Dado in sides)
Unfinished shelves - ¾" white melamine (Less than 27" wide)
Unfinished shelves – 1" white melamine (27" and wider)
Doors and Drawer front – ¾" HPL exterior, white liner interior
Cabinet edge band - .018 PVC
Door and Drawer front edge band – .018 PVC or 3mm PVC
Drawer Box – ½" white melamine

Standard Hardware

Hinges – 120-degree Blum Hinge
Drawer Slide – FR5000 Fullerter full extension ball bearing (100 lb.)
Pull – 4" satin chrome wire pull
Shelf Clips – 5mm metal spoon

Standard Options

Finished ends – ¾" HPL exterior, white liner interior

Custom Options

Sub-Bases – ¾" plywood construction (Cabinets have a flush bottom, sub-bases ordered separately)
Locks – Choice of lock and key options
Finished Interiors – ¾" HPL interiors with either white liner exterior or matching HPL exteriors, determined by finished end selection.

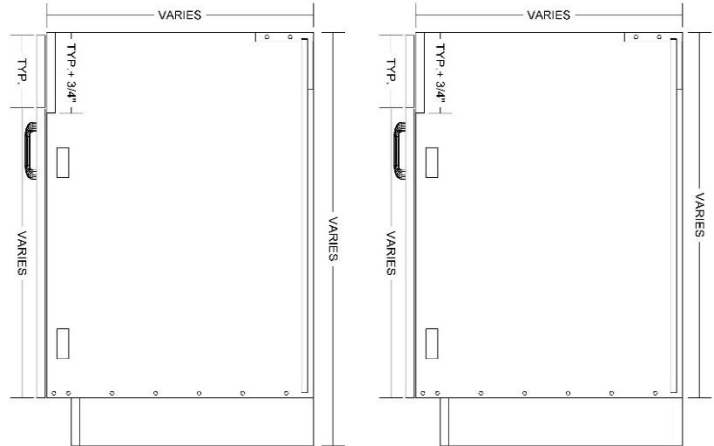
Accessory Options

See Accessory list which include Hardware, Components and Operations.

SB2D2F



Base 2 doors, 2 false fronts cabinet
Typical Top false fronts 6" high



TYPICAL: SB2D1F-M
INTEGRAL AND LOOSE SUBBASE APPLICATIONS

Laminate cabinets are available in a wide range of standard features and options. Additionally, custom configurations are possible. The website supports many of the features needed to quote and order commercial grade laminate or melamine products. The best value is made available by selecting from the standard features listed below (default settings in the configurator).

Standard door

Pair Hinges

Standard Sizes

Width ranges 18" to 39"
Height ranges 18" to 42"
Depth ranges 9" to 30"

Standard features

Unfinished Sides – 3/4" white melamine
Finished Sides - 3/4" HPL exterior, white liner interior
Unfinished bottom - 3/4" white melamine
Unfinished top stretchers - 3/4" white melamine
Unfinished back – 1/2" white melamine (Dado in sides)
Unfinished shelves - 3/4" white melamine (Less than 27" wide)
Unfinished shelves – 1" white melamine (27" and wider)
Doors and Drawer front – 3/4" HPL exterior, white liner interior
Cabinet edge band - .018 PVC
Door and Drawer front edge band – .018 PVC or 3mm PVC

Standard Hardware

Hinges – 120-degree Blum Hinge
Pull – 4" satin chrome wire pull
Shelf Clips – 5mm metal spoon

Standard Options

Finished ends – 3/4" HPL exterior, white liner interior

Custom Options

Sub-Bases – 3/4" plywood construction (Cabinets have a flush bottom, sub-bases ordered separately)
Locks – Choice of lock and key options
Finished Interiors – 3/4" HPL interiors with either white liner exterior or matching HPL exteriors, determined by finished end selection.

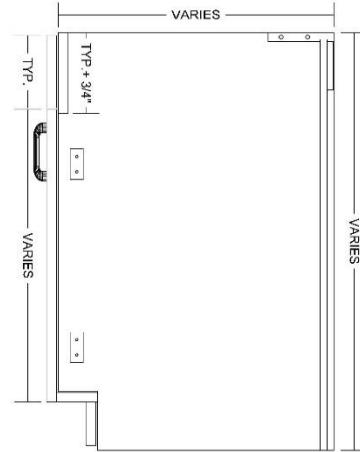
Accessory Options

See Accessory list which include Hardware, Components and Operations.

SB2D2F-ATK



**Base 2 doors, 2 false fronts cab.
Toe Kicks attached back of doors**



**TYPICAL: SB2D2F-ATK-M
INTEGRAL AND LOOSE SUBBASE APPLICATIONS**

Laminate cabinets are available in a wide range of standard features and options. Additionally, custom configurations are possible. The website supports many of the features needed to quote and order commercial grade laminate or melamine products. The best value is made available by selecting from the standard features listed below (default settings in the configurator).

Standard door

Pair Hinges

Standard Sizes

Width ranges 18" to 39"
Height ranges 18" to 42"
Depth ranges 9" to 30"

Standard features

Unfinished Sides – 3/4" white melamine
Finished Sides - 3/4" HPL exterior, white liner interior
No bottom – Toe Kick attached to back of doors
Unfinished top stretchers - 3/4" white melamine
Unfinished back – 1/2" white melamine (Dado in sides)
Unfinished shelves - 3/4" white melamine (Less than 27" wide)
Unfinished shelves – 1" white melamine (27" and wider)
Doors and Drawer front – 3/4" HPL exterior, white liner interior
Cabinet edge band - .018 PVC
Door and Drawer front edge band – .018 PVC or 3mm PVC

Standard Hardware

Hinges – 120-degree Blum Hinge
Pull – 4" satin chrome wire pull
Shelf Clips – 5mm metal spoon

Standard Options

Finished ends – 3/4" HPL exterior, white liner interior

Custom Options

Sub-Bases – 3/4" plywood construction (Cabinets have a flush bottom, sub-bases ordered separately)
Locks – Choice of lock and key options
Finished Interiors – 3/4" HPL interiors with either white liner exterior or matching HPL exteriors, determined by finished end selection.

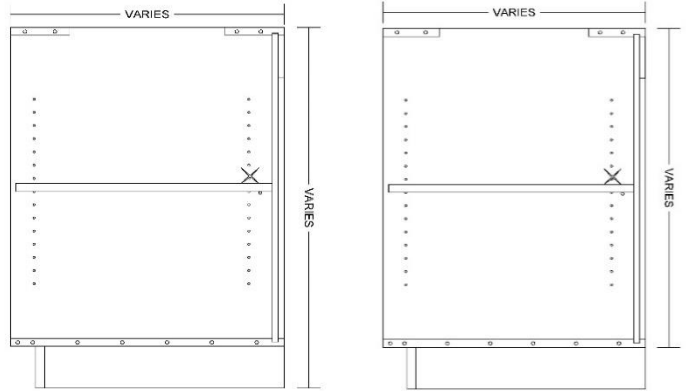
Accessory Options

See Accessory list which include Hardware, Components and Operations.

BOPEN



Base open cabinet



TYPICAL: BOPEN-1AS-L

INTEGRAL AND LOOSE SUBBASE APPLICATIONS

Laminate cabinets are available in a wide range of standard features and options. Additionally, custom configurations are possible. The website supports many of the features needed to quote and order commercial grade laminate or melamine products. The best value is made available by selecting from the standard features listed below (default settings in the configurator).

Standard door

None

Standard Sizes

Width ranges 9" to 39"
Height ranges 12" to 42"
Depth ranges 9" to 30"

Standard features

Unfinished Sides – ¾" HPL Interior, white liner exterior
Finished Sides - ¾" HPL exterior, HPL interior
Finished bottom - ¾" HPL exterior, HPL interior
Unfinished top - ¾" HPL Interior, white liner exterior
Unfinished back – ½" HPL interior, white liner exterior
Unfinished shelves - ¾" HPL 2 sides (Less than 27" wide)
Unfinished shelves – 1" HPL 2 sides (27" and wider)
Doors – None
Cabinet edge band - .018 PVC
Door edge band – .None

Standard Hardware

Hinges – None
Pull – None
Shelf Clips – 5mm metal spoon

Standard Options

Finished ends – ¾" HPL exterior, ¾" HPL exterior

Custom Options

Sub-Bases – ¾" plywood construction (Cabinets have a flush bottom, sub-bases ordered separately)
Locks – None
Finished Interiors – Finished Interiors are standard because of the exposed open area. Please unselect FI if white melamine is desired

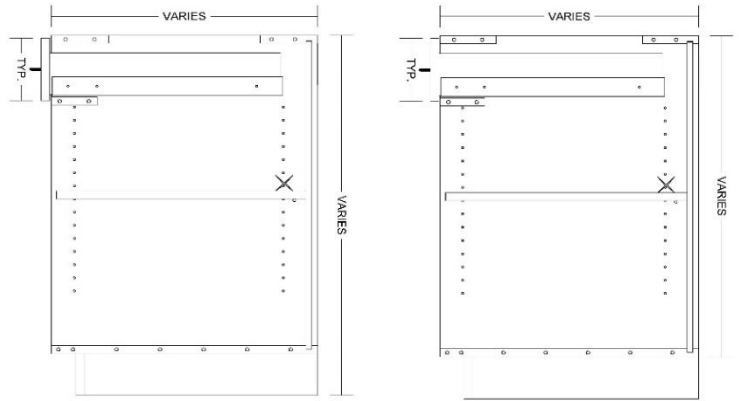
Accessory Options

See Accessory list which include Hardware, Components and Operations.

B0D1D-BO



**Base open cabinet with
one 6" top drawer**



**TYPICAL: B0D1D-BO-1AS-L
INTEGRAL AND LOOSE SUBBASE APPLICATIONS**

Laminate cabinets are available in a wide range of standard features and options. Additionally, custom configurations are possible. The website supports many of the features needed to quote and order commercial grade laminate or melamine products. The best value is made available by selecting from the standard features listed below (default settings in the configurator).

Standard door

None

Standard Sizes

Width ranges 9" to 39"
Height ranges 12" to 42"
Depth ranges 9" to 30"

Standard features

Unfinished Sides – ¾" HPL Interior, white liner exterior
Finished Sides - ¾" HPL exterior, HPL interior
Finished bottom - ¾" HPL exterior, HPL interior
Unfinished top - ¾" HPL Interior, white liner exterior
Unfinished back – ½" HPL interior, white liner exterior
Unfinished shelves - ¾" HPL 2 sides (Less than 27" wide)
Unfinished shelves – 1" HPL 2 sides (27" and wider)
Drawer Front – ¾" HPL Interior, white liner exterior
Cabinet edge band - .018 PVC
Drawer edge band – .018 PVC or 3mm PVC

Standard Hardware

Hinges – None
Drawer Slide – FR5000 Fullerter full extension ball bearing (100 lb.)
Pull – 4" satin chrome wire pull
Shelf Clips – 5mm metal spoon

Standard Options

Finished ends – ¾" HPL exterior, ¾" HPL exterior

Custom Options

Sub-Bases – ¾" plywood construction (Cabinets have a flush bottom, sub-bases ordered separately)
Locks – Choice of lock and key options
Finished Interiors – Finished Interiors are standard because of the exposed open area. Please unselect FI if white melamine is desired

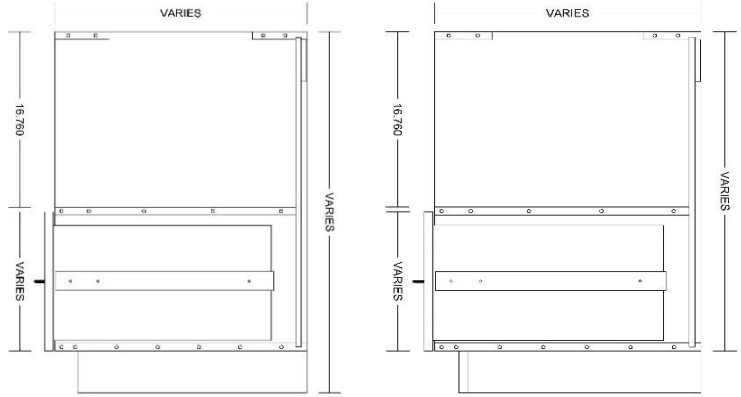
Accessory Options

See Accessory list which include Hardware, Components and Operations.

BOD1D-TO



**Base open cabinet with
one file drawer on the bottom**



**TYPICAL: BOD1D-TO-1AS-L
INTEGRAL AND LOOSE SUBBASE APPLICATIONS**

Laminate cabinets are available in a wide range of standard features and options. Additionally, custom configurations are possible. The website supports many of the features needed to quote and order commercial grade laminate or melamine products. The best value is made available by selecting from the standard features listed below (default settings in the configurator).

Standard door

None

Standard Sizes

Width ranges 9" to 39" (15.75" wide required for letter files)
Height ranges 12" to 42"
Depth ranges 9" to 30"

Standard features

Unfinished Sides – ¾" HPL Interior, white liner exterior
Finished Sides - ¾" HPL exterior, HPL interior
Finished bottom - ¾" HPL exterior, HPL interior
Unfinished top - ¾" HPL Interior, white liner exterior
Unfinished back – ½" HPL interior, white liner exterior
Unfinished shelves - ¾" HPL 2 sides (Less than 27" wide)
Unfinished shelves – 1" HPL 2 sides (27" and wider)
Drawer Front – ¾" HPL Interior, white liner exterior
Cabinet edge band - .018 PVC
Drawer edge band – .018 PVC or 3mm PVC

Standard Hardware

Hinges – None
Drawer Slide – FR5000 Fullerer full extension ball bearing (100 lb.)
Pull – 4" satin chrome wire pull
Shelf Clips – 5mm metal spoon
Hanging file rail

Standard Options

Finished ends – ¾" HPL exterior, ¾" HPL exterior

Custom Options

Sub-Bases – ¾" plywood construction (Cabinets have a flush bottom, sub-bases ordered separately)
Locks – Choice of lock and key options
Finished Interiors – Finished Interiors are standard because of the exposed open area. Please unselect FI if white melamine is desired

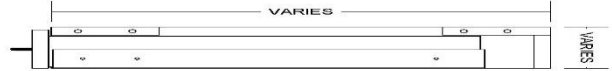
Accessory Options

See Accessory list which include Hardware, Components and Operations.

PENCILDRW



Pencil drawer for knee space applications



TYPICAL: PENCILDRW-M

Laminate cabinets are available in a wide range of standard features and options. Additionally, custom configurations are possible. The website supports many of the features needed to quote and order commercial grade laminate or melamine products. The best value is made available by selecting from the standard features listed below (default settings in the configurator).

Standard door

None

Standard Sizes

Width ranges 9" to 39"
Height ranges 6" to 12"
Depth ranges 10" to 30"

Standard features

Unfinished Sides – 3/4" white melamine
Finished Sides - 3/4" HPL exterior, white liner interior
Finished bottom - 3/4" HPL exterior, white liner interior
Unfinished top stretchers - 3/4" white melamine
Unfinished back – 1/2" white melamine (Dado in sides)
Drawer front – 3/4" HPL exterior, white liner interior
Cabinet edge band - .018 PVC
Drawer front edge band – .018 PVC or 3mm PVC
Drawer Box – 1/2" white melamine

Standard Hardware

Drawer Slide – FR5000 Fullerter full extension ball bearing (100 lb.)
Pull – 4" satin chrome wire pull

Standard Options

Finished ends – 3/4" HPL exterior, white liner interior

Custom Options

Locks – Choice of lock and key options
Finished Interiors – 3/4" HPL interiors with either white liner exterior or matching HPL exteriors, determined by finished end selection.

Accessory Options

See Accessory list which include Hardware, Components and Operations.

T1DL/T1DR

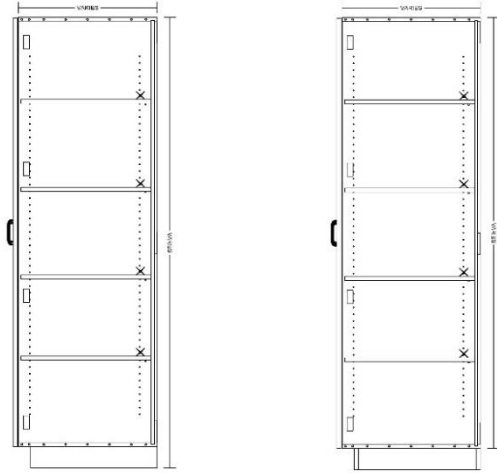


Left Hand Hinge



Right Hand Hinge

Tall 1 door cabinet



TYPICAL: T1DL-4AS-M

T1DR-4AS-M

INTEGRAL AND LOOSE SUBBASE APPLICATIONS

Laminate cabinets are available in a wide range of standard features and options. Additionally, custom configurations are possible. The website supports many of the features needed to quote and order commercial grade laminate or melamine products. The best value is made available by selecting from the standard features listed below (default settings in the configurator).

Standard door

Left hand hinge
Right hand hinge

Standard Sizes

Width ranges 9" to 24"
Height ranges 42" to 96"
Depth ranges 9" to 30"

Standard features

Unfinished Sides – 3/4" white melamine
Finished Sides - 3/4" HPL exterior, white liner interior
Unfinished bottom - 3/4" white melamine
Unfinished top stretchers - 3/4" white melamine
Unfinished back – 1/2" white melamine (Dado in sides)
Unfinished shelves - 3/4" white melamine (Less than 27" wide)
Unfinished shelves – 1" white melamine (27" and wider)
Doors – 3/4" HPL exterior, white liner interior
Cabinet edge band - .018 PVC
Door edge band – .018 PVC or 3mm PVC

Standard Hardware

Hinges – 120-degree Blum Hinge
Pull – 4" satin chrome wire pull
Shelf Clips – 5mm metal spoon

Standard Options

Finished ends – 3/4" HPL exterior, white liner interior

Custom Options

Sub-Bases – 3/4" plywood construction (Cabinets have a flush bottom, sub-bases ordered separately)
Locks – Choice of lock and key options
Finished Interiors – 3/4" HPL interiors with either white liner exterior or matching HPL exteriors, determined by finished end selection.

Accessory Options

See Accessory list which include Hardware, Components and Operations.

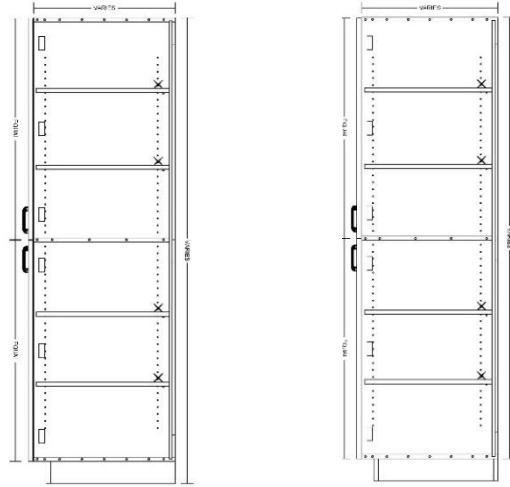
T1DL1DL/T1DR1DR



Left Hand Hinge

Right Hand Hinge

Tall 1 door over 1 door cabinet



TYPICAL: T1D1DL-4AS-M

T1D1DR-4AS-M

INTEGRAL AND LOOSE SUBBASE APPLICATIONS

Laminate cabinets are available in a wide range of standard features and options. Additionally, custom configurations are possible. The website supports many of the features needed to quote and order commercial grade laminate or melamine products. The best value is made available by selecting from the standard features listed below (default settings in the configurator).

Standard door

- Left hand hinge
- Right hand hinge

Standard Sizes

- Width ranges 9" to 24"
- Height ranges 42" to 96"
- Depth ranges 9" to 30"

Standard features

- Unfinished Sides – ¾" white melamine
- Finished Sides - ¾" HPL exterior, white liner interior
- Unfinished bottom - ¾" white melamine
- Unfinished top stretchers - ¾" white melamine
- Unfinished back – ½" white melamine (Dado in sides)
- Unfinished shelves - ¾" white melamine (Less than 27" wide)
- Unfinished shelves – 1" white melamine (27" and wider)
- Doors – ¾" HPL exterior, white liner interior
- Cabinet edge band - .018 PVC
- Door edge band – .018 PVC or 3mm PVC

Standard Hardware

- Hinges – 120-degree Blum Hinge
- Pull – 4" satin chrome wire pull
- Shelf Clips – 5mm metal spoon

Standard Options

- Finished ends – ¾" HPL exterior, white liner interior

Custom Options

- Sub-Bases – ¾" plywood construction (Cabinets have a flush bottom, sub-bases ordered separately)
- Locks – Choice of lock and key options
- Finished Interiors – ¾" HPL interiors with either white liner exterior or matching HPL exteriors, determined by finished end selection.

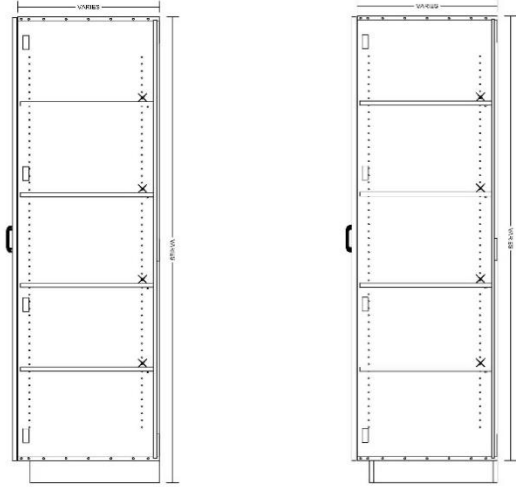
Accessory Options

- See Accessory list which include Hardware, Components and Operations.

T2D



Tall 2 door cabinet



**TYPICAL: T2D-4AS-M
INTEGRAL AND LOOSE SUBBASE APPLICATIONS**

Laminate cabinets are available in a wide range of standard features and options. Additionally, custom configurations are possible. The website supports many of the features needed to quote and order commercial grade laminate or melamine products. The best value is made available by selecting from the standard features listed below (default settings in the configurator).

Standard door

Pair Hinges

Standard Sizes

Width ranges 30" to 39"
Height ranges 42" to 96"
Depth ranges 9" to 30"

Standard features

Unfinished Sides – ¾" white melamine
Finished Sides - ¾" HPL exterior, white liner interior
Unfinished bottom - ¾" white melamine
Unfinished top stretchers - ¾" white melamine
Unfinished back – ½" white melamine (Dado in sides)
Unfinished shelves - ¾" white melamine (Less than 27" wide)
Unfinished shelves – 1" white melamine (27" and wider)
Doors – ¾" HPL exterior, white liner interior
Cabinet edge band - .018 PVC
Door edge band – .018 PVC or 3mm PVC

Standard Hardware

Hinges – 120-degree Blum Hinge
Pull – 4" satin chrome wire pull
Shelf Clips – 5mm metal spoon

Standard Options

Finished ends – ¾" HPL exterior, white liner interior

Custom Options

Sub-Bases – ¾" plywood construction (Cabinets have a flush bottom, sub-bases ordered separately)
Locks – Choice of lock and key options
Finished Interiors – ¾" HPL interiors with either white liner exterior or matching HPL exteriors, determined by finished end selection.

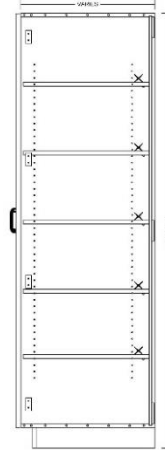
Accessory Options

See Accessory list which include Hardware, Components and Operations.

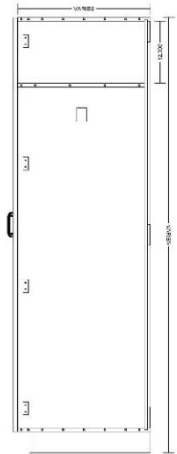
T2D-WDB



Tall 2 door cabinet, fixed divider, hanging area on left with closet rod, adjustable shelf area on right.



LEFT SECTION



RIGHT SECTION

TYPICAL: T2D-WDB-4AS-M

INTEGRAL AND LOOSE SUBBASE APPLICATIONS

Laminate cabinets are available in a wide range of standard features and options. Additionally, custom configurations are possible. The website supports many of the features needed to quote and order commercial grade laminate or melamine products. The best value is made available by selecting from the standard features listed below (default settings in the configurator).

Standard door

Pair Hinges

Standard Sizes

Width ranges 30" to 39"
Height ranges 42" to 96"
Depth ranges 9" to 30"

Standard features

Unfinished Sides – ¾" white melamine
Finished Sides - ¾" HPL exterior, white liner interior
Unfinished divider - ¾" white melamine
Unfinished fixed shelf - ¾" white melamine
Unfinished bottom - ¾" white melamine
Unfinished top stretchers - ¾" white melamine
Unfinished back – ½" white melamine (Dado in sides)
Unfinished shelves - ¾" white melamine (Less than 27" wide)
Unfinished shelves – 1" white melamine (27" and wider)
Doors – ¾" HPL exterior, white liner interior
Cabinet edge band - .018 PVC
Door edge band – .018 PVC or 3mm PVC

Standard Hardware

Hinges – 120-degree Blum Hinge
Pull – 4" satin chrome wire pull
Shelf Clips – 5mm metal spoon
Closet rod and flanges

Standard Options

Finished ends – ¾" HPL exterior, white liner interior

Custom Options

Sub-Bases – ¾" plywood construction (Cabinets have a flush bottom, sub-bases ordered separately)
Locks – Choice of lock and key options
Finished Interiors – ¾" HPL interiors with either white liner exterior or matching HPL exteriors, determined by finished end selection.

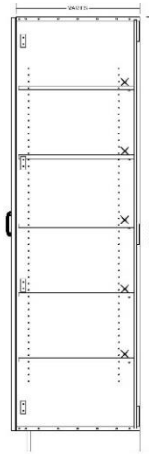
Accessory Options

See Accessory list which include Hardware, Components and Operations.

T2D-WDB-2D



Tall 2 door cabinet, fixed divider, hanging area on left with closet rod, adjustable shelf area on right, 2 drawers behind doors.



LEFT SECTION



RIGHT SECTION

TYPICAL: T2D-WDB—2D-4AS-M

INTEGRAL AND LOOSE SUBBASE APPLICATIONS

Laminate cabinets are available in a wide range of standard features and options. Additionally, custom configurations are possible. The website supports many of the features needed to quote and order commercial grade laminate or melamine products. The best value is made available by selecting from the standard features listed below (default settings in the configurator).

Standard door

Pair Hinges

Standard Sizes

Width ranges 30" to 39"
Height ranges 84" to 96"
Depth ranges 9" to 30"

Standard features

Unfinished Sides – ¾" white melamine
Finished Sides - ¾" HPL exterior, white liner interior
Unfinished divider - ¾" white melamine
Unfinished fixed shelf - ¾" white melamine
Unfinished bottom - ¾" white melamine
Unfinished top stretchers - ¾" white melamine
Unfinished back – ½" white melamine (Dado in sides)
Unfinished shelves - ¾" white melamine (Less than 27" wide)
Unfinished shelves – 1" white melamine (27" and wider)
Doors – ¾" HPL exterior, white liner interior
Cabinet edge band - .018 PVC
Door edge band – .018 PVC or 3mm PVC
Drawer front edge band – .018 PVC or 3mm PVC
Drawer Box – ½" white melamine

Standard Hardware

Hinges – 120-degree Blum Hinge
Drawer Slide – FR5000 Fuller full extension ball bearing (100 lb.)
Pull – 4" satin chrome wire pull
Shelf Clips – 5mm metal spoon
Closet rod and flanges
Hanging File Rails

Standard Options

Finished ends – ¾" HPL exterior, white liner interior

Custom Options

Sub-Bases – ¾" plywood construction (Cabinets have a flush bottom, sub-bases ordered separately)
Locks – Choice of lock and key options
Finished Interiors – ¾" HPL interiors with either white liner exterior or matching HPL exteriors, determined by finished end selection.

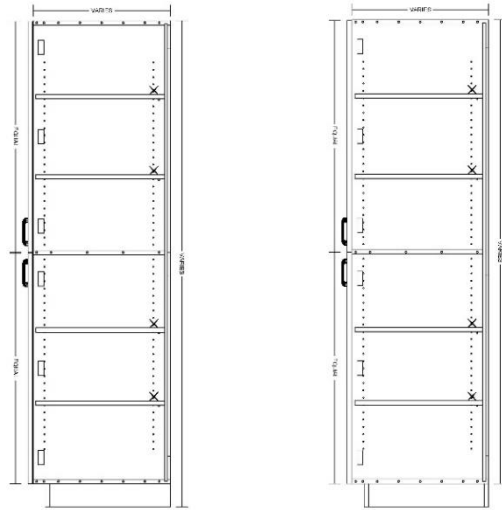
Accessory Options

See Accessory list which include Hardware, Components and Operations.

T2D2D



Tall 2 door over 2 door cabinet



**TYPICAL: T2D2D-4AS-M
INTEGRAL AND LOOSE SUBBASE APPLICATIONS**

Laminate cabinets are available in a wide range of standard features and options. Additionally, custom configurations are possible. The website supports many of the features needed to quote and order commercial grade laminate or melamine products. The best value is made available by selecting from the standard features listed below (default settings in the configurator).

Standard door

Pair Hinges

Standard Sizes

Width ranges 30" to 39"
Height ranges 42" to 96"
Depth ranges 9" to 30"

Standard features

Unfinished Sides – ¾" white melamine
Finished Sides - ¾" HPL exterior, white liner interior
Unfinished bottom - ¾" white melamine
Unfinished top stretchers - ¾" white melamine
Unfinished back – ½" white melamine (Dado in sides)
Unfinished shelves - ¾" white melamine (Less than 27" wide)
Unfinished shelves – 1" white melamine (27" and wider)
Doors – ¾" HPL exterior, white liner interior
Cabinet edge band - .018 PVC
Door edge band – .018 PVC or 3mm PVC

Standard Hardware

Hinges – 120-degree Blum Hinge
Pull – 4" satin chrome wire pull
Shelf Clips – 5mm metal spoon

Standard Options

Finished ends – ¾" HPL exterior, white liner interior

Custom Options

Sub-Bases – ¾" plywood construction (Cabinets have a flush bottom, sub-bases ordered separately)
Locks – Choice of lock and key options
Finished Interiors – ¾" HPL interiors with either white liner exterior or matching HPL exteriors, determined by finished end selection.

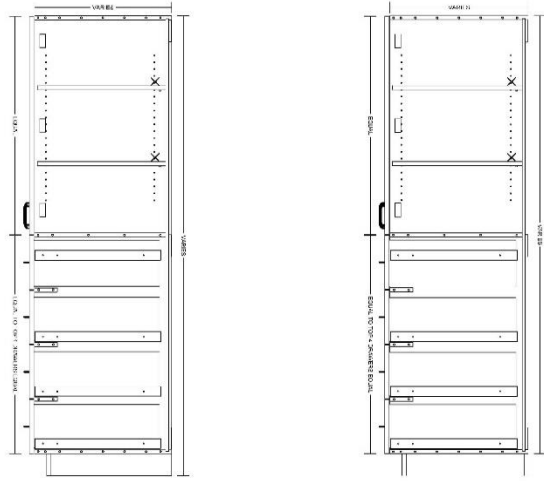
Accessory Options

See Accessory list which include Hardware, Components and Operations.

T2D4D



Tall 2 door cabinet, 4 Eq drawers



**TYPICAL: T2D4D-2AS-M
INTEGRAL AND LOOSE SUBBASE APPLICATIONS**

Laminate cabinets are available in a wide range of standard features and options. Additionally, custom configurations are possible. The website supports many of the features needed to quote and order commercial grade laminate or melamine products. The best value is made available by selecting from the standard features listed below (default settings in the configurator).

Standard door

Pair Hinges

Standard Sizes

Width ranges 30" to 39"
Height ranges 42" to 96"
Depth ranges 9" to 30"

Standard features

Unfinished Sides – ¾" white melamine
Finished Sides - ¾" HPL exterior, white liner interior
Unfinished divider - ¾" white melamine
Unfinished fixed shelf - ¾" white melamine
Unfinished bottom - ¾" white melamine
Unfinished top stretchers - ¾" white melamine
Unfinished back – ½" white melamine (Dado in sides)
Unfinished shelves - ¾" white melamine (Less than 27" wide)
Unfinished shelves – 1" white melamine (27" and wider)
Doors – ¾" HPL exterior, white liner interior
Cabinet edge band - .018 PVC
Door edge band – .018 PVC or 3mm PVC
Drawer front edge band – .018 PVC or 3mm PVC
Drawer Box – ½" white melamine

Standard Hardware

Hinges – 120-degree Blum Hinge
Drawer Slide – FR5000 Fullerer full extension ball bearing (100 lb.)
Pull – 4" satin chrome wire pull
Shelf Clips – 5mm metal spoon
Standard Options

Finished ends – ¾" HPL exterior, white liner interior

Custom Options

Sub-Bases – ¾" plywood construction (Cabinets have a flush bottom, sub-bases ordered separately)
Locks – Choice of lock and key options
Finished Interiors – ¾" HPL interiors with either white liner exterior or matching HPL exteriors, determined by finished end selection.

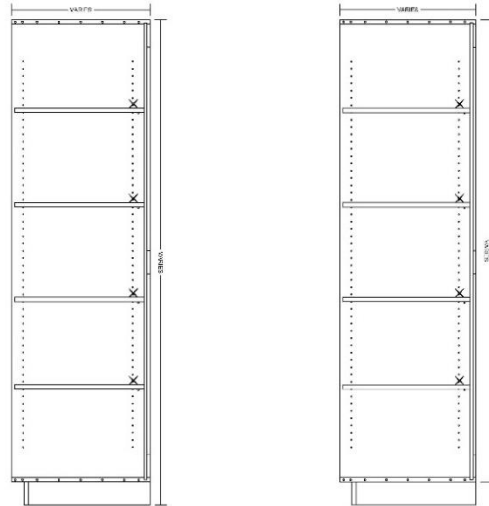
Accessory Options

See Accessory list which include Hardware, Components and Operations.

TOPEN



Tall open cabinet



**TYPICAL: TOPEN-4AS-L
INTEGRAL AND LOOSE SUBBASE APPLICATIONS**

Laminate cabinets are available in a wide range of standard features and options. Additionally, custom configurations are possible. The website supports many of the features needed to quote and order commercial grade laminate or melamine products. The best value is made available by selecting from the standard features listed below (default settings in the configurator).

Standard door

None

Standard Sizes

Width ranges 9" to 39"
Height ranges 42" to 96"
Depth ranges 9" to 30"

Standard features

Unfinished Sides – ¾" HPL Interior, white liner exterior
Finished Sides - ¾" HPL exterior, HPL interior
Finished bottom - ¾" HPL exterior, HPL interior
Unfinished top - ¾" HPL Interior, white liner exterior
Unfinished back - ½" HPL interior, white liner exterior
Unfinished shelves - ¾" HPL 2 sides (Less than 27" wide)
Unfinished shelves - 1" HPL 2 sides (27" and wider)
Doors – None
Cabinet edge band - .018 PVC
Door edge band – .None

Standard Hardware

Hinges – None
Pull – None
Shelf Clips – 5mm metal spoon

Standard Options

Finished ends – ¾" HPL exterior, ¾" HPL exterior

Custom Options

Sub-Bases – ¾" plywood construction (Cabinets have a flush bottom, sub-bases ordered separately)
Locks – None
Finished Interiors – Finished Interiors are standard because of the exposed open area. Please unselect FI if white melamine is desired

Accessory Options

See Accessory list which include Hardware, Components and Operations.

T1DL-TO/T1DR-TO

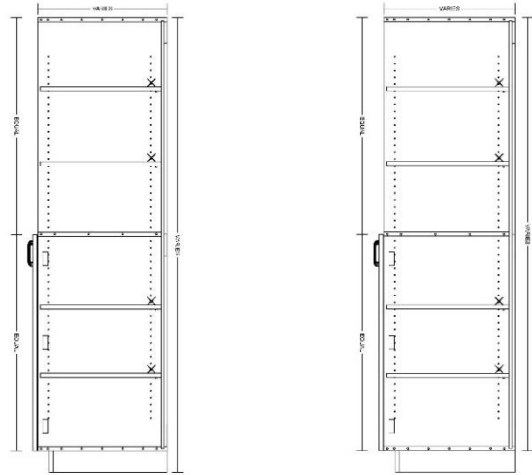


Left Hand Hinge



Right Hand Hinge

Tall 1 door cabinet with open space above door



TYPICAL: T1DLTO-4AS-M

T1DRTO-4AS-M

INTEGRAL AND LOOSE SUBBASE APPLICATIONS

Laminate cabinets are available in a wide range of standard features and options. Additionally, custom configurations are possible. The website supports many of the features needed to quote and order commercial grade laminate or melamine products. The best value is made available by selecting from the standard features listed below (default settings in the configurator).

Standard door

Left hand hinge
Right hand hinge

Standard Sizes

Width ranges 9" to 24"
Height ranges 42" to 96"
Depth ranges 9" to 30"

Standard features

Unfinished Sides – ¾" HPL Interior, white liner exterior
Finished Sides - ¾" HPL exterior, HPL interior
Finished bottom - ¾" HPL exterior, HPL interior
Unfinished top - ¾" HPL Interior, white liner exterior
Unfinished back – ½" HPL interior, white liner exterior
Unfinished shelves - ¾" HPL 2 sides (Less than 27" wide)
Unfinished shelves – 1" HPL 2 sides (27" and wider)
Door – ¾" HPL exterior, white liner interior
Cabinet edge band - .018 PVC
Door edge band – .018 PVC or 3mm PVC

Standard Hardware

Hinges – 120-degree Blum Hinge
Pull – 4" satin chrome wire pull
Shelf Clips – 5mm metal spoon

Standard Options

Finished ends – ¾" HPL exterior, white liner interior

Custom Options

Sub-Bases – ¾" plywood construction (Cabinets have a flush bottom, sub-bases ordered separately)
Locks – Choice of lock and key options
Finished Interiors – ¾" HPL interiors with either white liner exterior or matching HPL exteriors, determined by finished end selection.

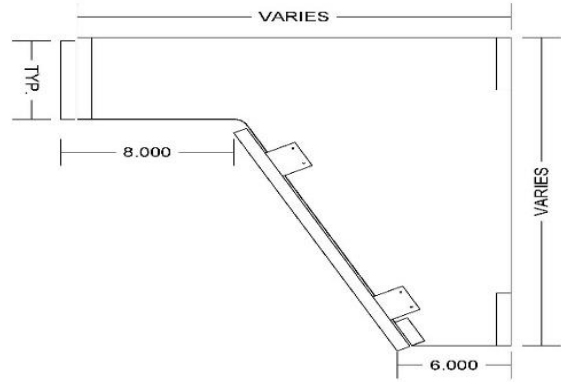
Accessory Options

See Accessory list which include Hardware, Components and Operations.

SB2F-ANGLED



VANITY with removable panel



Laminate cabinets are available in a wide range of standard features and options. Additionally, custom configurations are possible. The website supports many of the features needed to quote and order commercial grade laminate or melamine products. The best value is made available by selecting from the standard features listed below (default settings in the configurator).

Standard door

None

Standard Sizes

Width ranges 18" to 39"
Height ranges 18" to 28"
Depth ranges 18" to 30"

Standard features

Unfinished Sides – ¾" white melamine
Finished Sides - ¾" HPL exterior, white liner interior
Unfinished bottom - ¾" white melamine
Unfinished top stretchers - ¾" white melamine
Unfinished back – None
Unfinished shelves - None
Unfinished shelves – None
Doors and Drawer front – ¾" HPL exterior, white liner interior
Cabinet edge band - .018 PVC
Door and Drawer front edge band – .018 PVC or 3mm PVC

Standard Hardware

Hinges – None
Pull – 4" satin chrome wire pull
Shelf Clips – None
Keku clips for removable panel

Standard Options

Finished ends – ¾" HPL exterior, white liner interior

Custom Options

Sub-Bases – None
Locks – None
Finished Interiors – ¾" HPL interiors with either white liner exterior or matching HPL exteriors, determined by finished end selection.

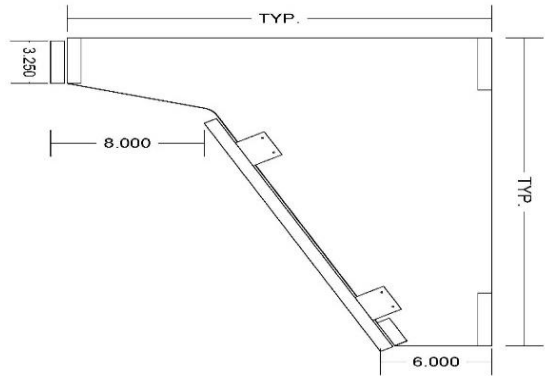
Accessory Options

See Accessory list which include Hardware, Components and Operations.

ADA SINK



ADA SINK with removable panel



Laminate cabinets are available in a wide range of standard features and options. Additionally, custom configurations are possible. The website supports many of the features needed to quote and order commercial grade laminate or melamine products. The best value is made available by selecting from the standard features listed below (default settings in the configurator).

Standard door

None

Standard Sizes

Width ranges 18" to 39"
Height ranges 23 1/2"
Depth ranges 18" to 30"

Standard features

Unfinished Sides – 3/4" white melamine
Finished Sides - 3/4" HPL exterior, white liner interior
Unfinished bottom - 3/4" white melamine
Unfinished top stretchers - 3/4" white melamine
Unfinished back – None
Unfinished shelves - None
Unfinished shelves – None
Doors and Drawer front – 3/4" HPL exterior, white liner interior
Cabinet edge band - .018 PVC
Door and Drawer front edge band – .018 PVC or 3mm PVC

Standard Hardware

Hinges – None
Pull – 4" satin chrome wire pull
Shelf Clips – None
Keku clips for removable panel

Standard Options

Finished ends – 3/4" HPL exterior, white liner interior

Custom Options

Sub-Bases – None
Locks – None
Finished Interiors – 3/4" HPL interiors with either white liner exterior or matching HPL exteriors, determined by finished end selection.

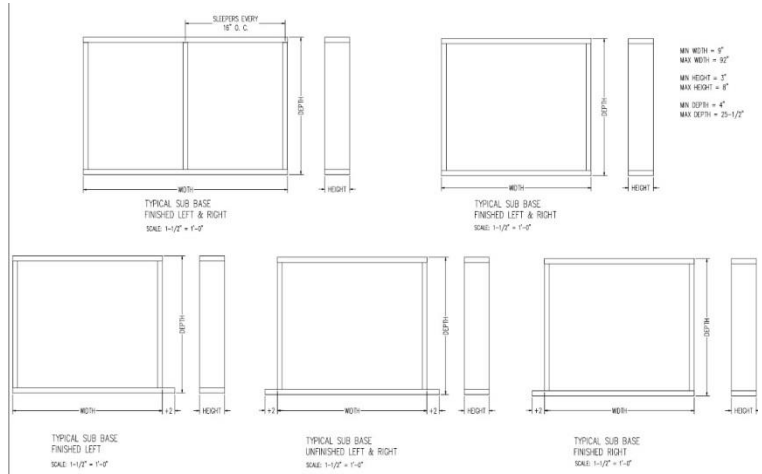
Accessory Options

See Accessory list which include Hardware, Components and Operations.

SUB-BASE



Plywood Sub-Base



Laminate cabinets are available in a wide range of standard features and options. Additionally, custom configurations are possible. The website supports many of the features needed to quote and order commercial grade laminate or melamine products. The best value is made available by selecting from the standard features listed below (default settings in the configurator).

Standard Sizes

Width ranges 12" to 36"
Length ranges 12" to 96"
Height ranges 3" to 12"

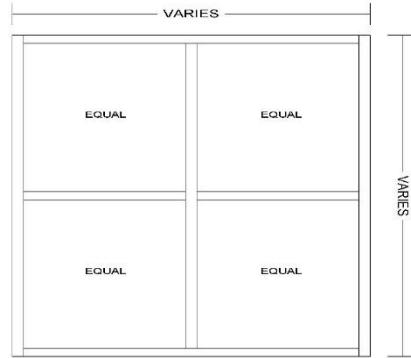
Standard features–

Core – 3/4" unfinished veneer core plywood
Unfinished ends – 2" extended ear for field fit
Finished ends – Flush end determined by finished end selection

WOPEN-2X2



**Open wall cabinet with
2 over 2 cubby holes**



TYPICAL: WOPEN-2X2-L

Laminate cabinets are available in a wide range of standard features and options. Additionally, custom configurations are possible. The website supports many of the features needed to quote and order commercial grade laminate or melamine products. The best value is made available by selecting from the standard features listed below (default settings in the configurator).

Standard door

None

Standard Sizes

Width ranges 12" to 39"
Height ranges 12" to 42"
Depth ranges 9" to 30"

Standard features

Unfinished Sides – ¾" HPL Interior, white liner exterior
Finished Sides - ¾" HPL exterior, HPL interior
Finished bottom - ¾" HPL exterior, HPL interior
Unfinished top - ¾" HPL Interior, white liner exterior
Unfinished back – ½" HPL interior, white liner exterior
Finished fixed shelves - ¾" HPL 2 sides
Finished fixed dividers - ¾" HPL 2 sides
Drawer Front - None
Cabinet edge band - .018 PVC
Drawer edge band – .None

Standard Hardware

Hinges – None
Pull – None
Shelf Clips – None

Standard Options

Finished ends – ¾" HPL exterior, ¾" HPL exterior

Custom Options

Finished Interiors – Finished Interiors are standard because of the exposed open area. Please unselect FI if white melamine is desired

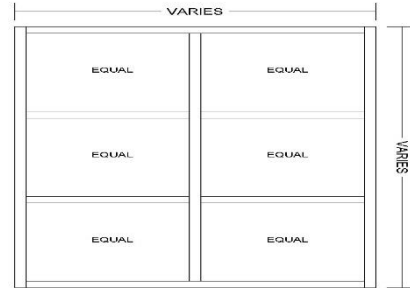
Accessory Options

See Accessory list which include Hardware, Components and Operations.

WOPEN 2X3



**Open wall cabinet with
2 over 3 cubby holes**



TYPICAL: WOPEN-2X3-L

Laminate cabinets are available in a wide range of standard features and options. Additionally, custom configurations are possible. The website supports many of the features needed to quote and order commercial grade laminate or melamine products. The best value is made available by selecting from the standard features listed below (default settings in the configurator).

Standard door

None

Standard Sizes

Width ranges 12" to 39"
Height ranges 18" to 42"
Depth ranges 9" to 30"

Standard features

Unfinished Sides – 3/4" HPL Interior, white liner exterior
Finished Sides - 3/4" HPL exterior, HPL interior
Finished bottom - 3/4" HPL exterior, HPL interior
Unfinished top - 3/4" HPL Interior, white liner exterior
Unfinished back – 1/2" HPL interior, white liner exterior
Finished fixed shelves - 3/4" HPL 2 sides
Finished fixed dividers - 3/4" HPL 2 sides
Drawer Front - None
Cabinet edge band - .018 PVC
Drawer edge band – .None

Standard Hardware

Hinges – None
Pull – None
Shelf Clips – None

Standard Options

Finished ends – 3/4" HPL exterior, 3/4" HPL exterior

Custom Options

Finished Interiors – Finished Interiors are standard because of the exposed open area. Please unselect FI if white melamine is desired

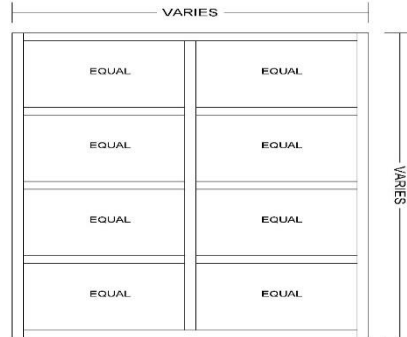
Accessory Options

See Accessory list which include Hardware, Components and Operations.

WOPEN -2X4



**Open wall cabinet with
2 over 4 cubby holes**



TYPICAL: WOPEN-2X4-L

Laminate cabinets are available in a wide range of standard features and options. Additionally, custom configurations are possible. The website supports many of the features needed to quote and order commercial grade laminate or melamine products. The best value is made available by selecting from the standard features listed below (default settings in the configurator).

Standard door

None

Standard Sizes

Width ranges 12" to 39"
Height ranges 18" to 42"
Depth ranges 9" to 30"

Standard features

Unfinished Sides – ¾" HPL Interior, white liner exterior
Finished Sides - ¾" HPL exterior, HPL interior
Finished bottom - ¾" HPL exterior, HPL interior
Unfinished top - ¾" HPL Interior, white liner exterior
Unfinished back – ½" HPL interior, white liner exterior
Finished fixed shelves - ¾" HPL 2 sides
Finished fixed dividers - ¾" HPL 2 sides
Drawer Front - None
Cabinet edge band - .018 PVC
Drawer edge band – .None

Standard Hardware

Hinges – None
Pull – None
Shelf Clips – None

Standard Options

Finished ends – ¾" HPL exterior, ¾" HPL exterior

Custom Options

Finished Interiors – Finished Interiors are standard because of the exposed open area. Please unselect FI if white melamine is desired

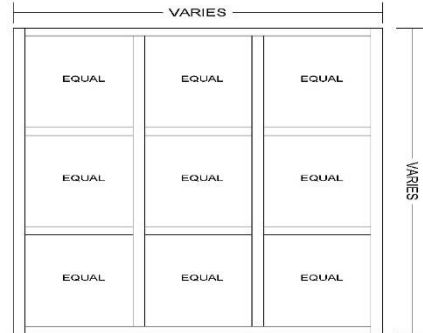
Accessory Options

See Accessory list which include Hardware, Components and Operations.

WOPEN-3X3



**Open wall cabinet with
3 over 3 cubby holes**



TYPICAL: WOPEN-3X3-L

Laminate cabinets are available in a wide range of standard features and options. Additionally, custom configurations are possible. The website supports many of the features needed to quote and order commercial grade laminate or melamine products. The best value is made available by selecting from the standard features listed below (default settings in the configurator).

Standard door

None

Standard Sizes

Width ranges 18" to 39"
Height ranges 18" to 42"
Depth ranges 9" to 30"

Standard features

Unfinished Sides – ¾" HPL Interior, white liner exterior
Finished Sides - ¾" HPL exterior, HPL interior
Finished bottom - ¾" HPL exterior, HPL interior
Unfinished top - ¾" HPL Interior, white liner exterior
Unfinished back – ½" HPL interior, white liner exterior
Finished fixed shelves - ¾" HPL 2 sides
Finished fixed dividers - ¾" HPL 2 sides
Drawer Front - None
Cabinet edge band - .018 PVC
Drawer edge band – .None

Standard Hardware

Hinges – None
Pull – None
Shelf Clips – None

Standard Options

Finished ends – ¾" HPL exterior, ¾" HPL exterior

Custom Options

Finished Interiors – Finished Interiors are standard because of the exposed open area. Please unselect FI if white melamine is desired

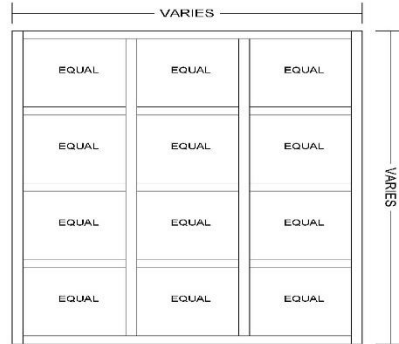
Accessory Options

See Accessory list which include Hardware, Components and Operations.

WOPEN-3X4



**Open wall cabinet with
3 over 4 cubby holes**



TYPICAL: WOPEN-3X4-L

Laminate cabinets are available in a wide range of standard features and options. Additionally, custom configurations are possible. The website supports many of the features needed to quote and order commercial grade laminate or melamine products. The best value is made available by selecting from the standard features listed below (default settings in the configurator).

Standard door

None

Standard Sizes

Width ranges 18" to 39"
Height ranges 24" to 42"
Depth ranges 9" to 30"

Standard features

Unfinished Sides – 3/4" HPL Interior, white liner exterior
Finished Sides - 3/4" HPL exterior, HPL interior
Finished bottom - 3/4" HPL exterior, HPL interior
Unfinished top - 3/4" HPL Interior, white liner exterior
Unfinished back – 1/2" HPL interior, white liner exterior
Finished fixed shelves - 3/4" HPL 2 sides
Finished fixed dividers - 3/4" HPL 2 sides
Drawer Front - None
Cabinet edge band - .018 PVC
Drawer edge band – .None

Standard Hardware

Hinges – None
Pull – None
Shelf Clips – None

Standard Options

Finished ends – 3/4" HPL exterior, 3/4" HPL exterior

Custom Options

Finished Interiors – Finished Interiors are standard because of the exposed open area. Please unselect FI if white melamine is desired

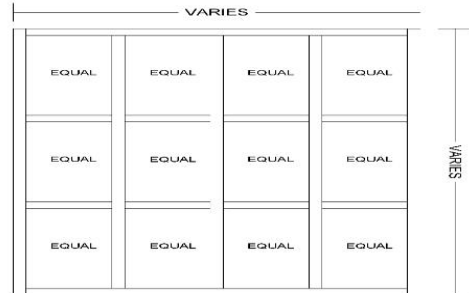
Accessory Options

See Accessory list which include Hardware, Components and Operations.

WOPEN- 4X3



**Open wall cabinet with
4 over 3 cubby holes**



TYPICAL: WOPEN-4X3-L

Laminate cabinets are available in a wide range of standard features and options. Additionally, custom configurations are possible. The website supports many of the features needed to quote and order commercial grade laminate or melamine products. The best value is made available by selecting from the standard features listed below (default settings in the configurator).

Standard door

None

Standard Sizes

Width ranges 24" to 39"
Height ranges 18" to 42"
Depth ranges 9" to 30"

Standard features

Unfinished Sides - 3/4" HPL Interior, white liner exterior
Finished Sides - 3/4" HPL exterior, HPL interior
Finished bottom - 3/4" HPL exterior, HPL interior
Unfinished top - 3/4" HPL Interior, white liner exterior
Unfinished back - 1/2" HPL interior, white liner exterior
Finished fixed shelves - 3/4" HPL 2 sides
Finished fixed dividers - 3/4" HPL 2 sides
Drawer Front - None
Cabinet edge band - .018 PVC
Drawer edge band - .None

Standard Hardware

Hinges - None
Pull - None
Shelf Clips - None

Standard Options

Finished ends - 3/4" HPL exterior, 3/4" HPL exterior

Custom Options

Finished Interiors - Finished Interiors are standard because of the exposed open area. Please unselect FI if white melamine is desired

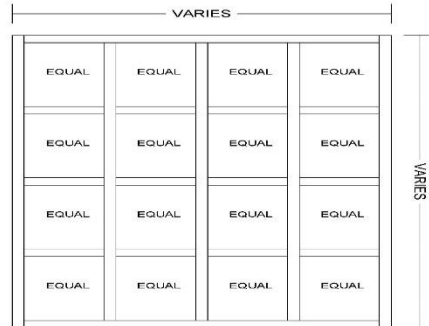
Accessory Options

See Accessory list which include Hardware, Components and Operations.

CUBBY 4 - 4



**Open wall cabinet with
4 over 4 cubby holes**



TYPICAL: WOPEN-4X4-L

Laminate cabinets are available in a wide range of standard features and options. Additionally, custom configurations are possible. The website supports many of the features needed to quote and order commercial grade laminate or melamine products. The best value is made available by selecting from the standard features listed below (default settings in the configurator).

Standard door

None

Standard Sizes

Width ranges 24" to 39"
Height ranges 24" to 42"
Depth ranges 9" to 30"

Standard features

Unfinished Sides – ¾" HPL Interior, white liner exterior
Finished Sides - ¾" HPL exterior, HPL interior
Finished bottom - ¾" HPL exterior, HPL interior
Unfinished top - ¾" HPL Interior, white liner exterior
Unfinished back – ½" HPL interior, white liner exterior
Finished fixed shelves - ¾" HPL 2 sides
Finished fixed dividers - ¾" HPL 2 sides
Drawer Front - None
Cabinet edge band - .018 PVC
Drawer edge band – .None

Standard Hardware

Hinges – None
Pull – None
Shelf Clips – None

Standard Options

Finished ends – ¾" HPL exterior, ¾" HPL exterior

Custom Options

Finished Interiors – Finished Interiors are standard because of the exposed open area. Please unselect FI if white melamine is desired

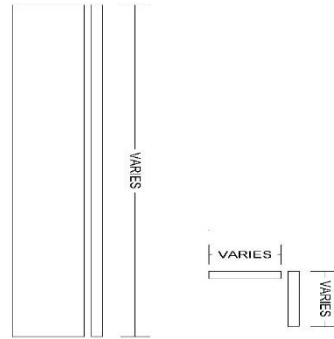
Accessory Options

See Accessory list which include Hardware, Components and Operations.

C-FILLER



Corner filler, edged on one short edge with .018 PVC



TYPICAL: C-FILLER

Laminate cabinets are available in a wide range of standard features and options. Additionally, custom configurations are possible. The website supports many of the features needed to quote and order commercial grade laminate or melamine products. The best value is made available by selecting from the standard features listed below (default settings in the configurator).

Standard Sizes

Width ranges 3" to 24"
Height ranges 12" to 96"

Standard features–

Core - 3/4" HPL one side, balanced backer
Edge - .018 PVC on one short edge

FILLER



Filler, edged on one short edge with .018 PVC



TYPICAL: FILLER

Laminate cabinets are available in a wide range of standard features and options. Additionally, custom configurations are possible. The website supports many of the features needed to quote and order commercial grade laminate or melamine products. The best value is made available by selecting from the standard features listed below (default settings in the configurator).

Standard Sizes

Width ranges 3" to 36"
Height ranges 12" to 96"

Standard features—

Core - ¾" HPL one side, balanced backer
Edge - .018 PVC on one short edge

FALSE FRONT



False Front, edging on all edges



TYPICAL: FALSE FRONT

Laminate cabinets are available in a wide range of standard features and options. Additionally, custom configurations are possible. The website supports many of the features needed to quote and order commercial grade laminate or melamine products. The best value is made available by selecting from the standard features listed below (default settings in the configurator).

Standard Sizes

Width ranges 3" to 36"
Height ranges 12" to 96"

Standard features–

Core - 3/4" HPL one side, balanced backer
Edge – all edges with .018 PVC or 3mm PVC

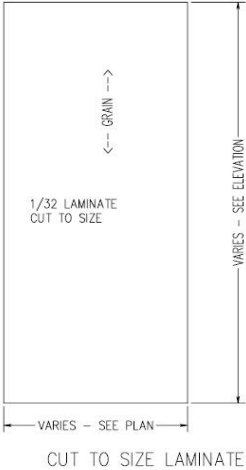
Options –

Laminate both sides (Determined by door finish selection)
Self edge (Laminate edges, determined by door edge selection)

Laminate



Cut to size laminate sheets



Laminate cabinets are available in a wide range of standard features and options. Additionally, custom configurations are possible. The website supports many of the features needed to quote and order commercial grade laminate or melamine products. The best value is made available by selecting from the standard features listed below (default settings in the configurator).

Standard Sizes

Width ranges 12" to 36"
Height ranges 12" to 96"

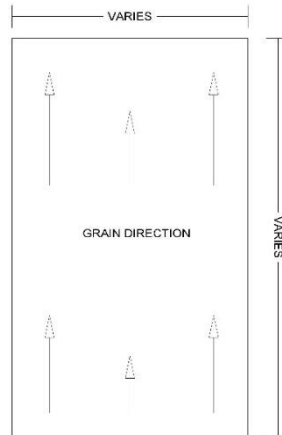
Standard features–

Laminate (Determined by room selection)

MEL



Melamine panel, edging on all edges



TYPICAL: MEL

Laminate cabinets are available in a wide range of standard features and options. Additionally, custom configurations are possible. The website supports many of the features needed to quote and order commercial grade laminate or melamine products. The best value is made available by selecting from the standard features listed below (default settings in the configurator).

Standard Sizes

Width ranges 3" to 36"
Height ranges 12" to 96"

Standard features-

Core - 3/4" white melamine two sides
Edge - all edges with .018 PVC or 3mm PVC (Determined by the door edge selection)

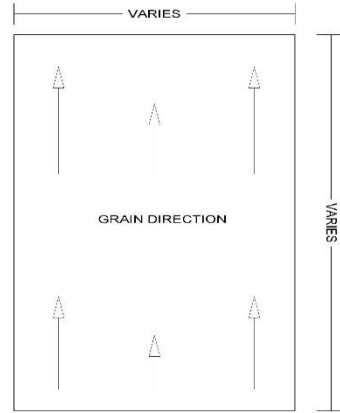
Options -

Self edge (Laminate edges, determined by door edge selection)

Panel



Panel, edging on all edges



TYPICAL: PANEL

Laminate cabinets are available in a wide range of standard features and options. Additionally, custom configurations are possible. The website supports many of the features needed to quote and order commercial grade laminate or melamine products. The best value is made available by selecting from the standard features listed below (default settings in the configurator).

Standard Sizes

Width ranges 3" to 36"
Height ranges 12" to 96"

Standard features—

Core - 3/4" HPL two sides
Edge – all edges with .018 PVC or 3mm PVC (Determined by the door edge selection)

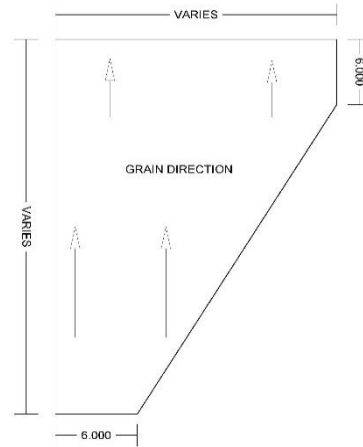
Options –

Self edge (Laminate edges, determined by door edge selection)

Support



Support, edging on front edge



TYPICAL: SUPPORT-SHP

Laminate cabinets are available in a wide range of standard features and options. Additionally, custom configurations are possible. The website supports many of the features needed to quote and order commercial grade laminate or melamine products. The best value is made available by selecting from the standard features listed below (default settings in the configurator).

Standard Sizes

Width ranges 12" to 36"
Height ranges 12" to 42"

Standard features–

Core - ¾" HPL two sides
Edge – front edge with .018 PVC or 3mm PVC (Determined by the cabinet edge selection)

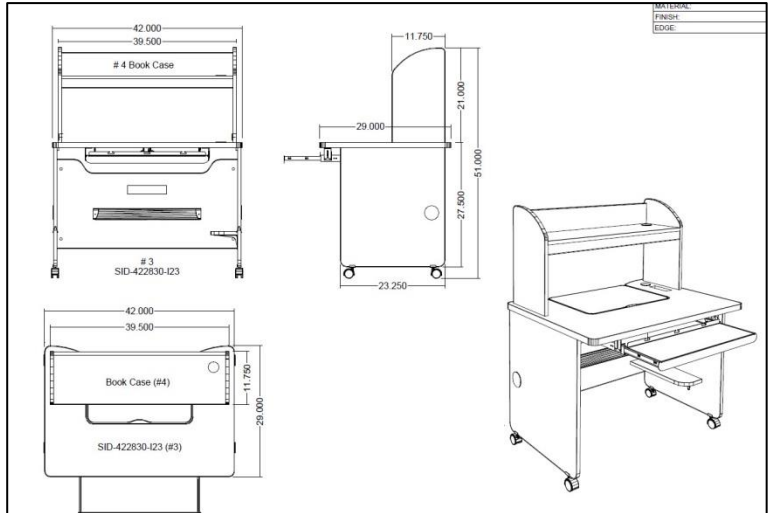
Options –

Self edge (Laminate edges, determined by cabinet edge selection)

MULTI-USE DESK



LAMINATE DESK, FLIP-IT KEYBOARD MONITOR HARDWARE



Laminate Featured Products are uniquely designed cabinet and furniture pieces. They come in specific sizes designed for optimum performance. They are available in a wide range of laminates and edge banding selection from major suppliers. Each Featured Product is available with a wide range of accessories. You may add or delete accessory items.

Standard door None

Standard Sizes Total elevation as shown
Width - 42"
Height - 51"
Depth - 29"

Standard features ¾" High Pressure Laminate surfaces
3mm PVC edges
Ready to Assemble (RTA) Hardware
CPU shelf
Upper bookshelf

Standard Options Casters
Flip-it pull out keyboard and pop monitor hardware
Wire Management channel
Grommets

Accessory Options Power Strip
Pop Up USB and Power Port

See Accessory list which include Hardware, Components and Operations.

MACHINED CUT OUT



Machined cut out, priced by square inch



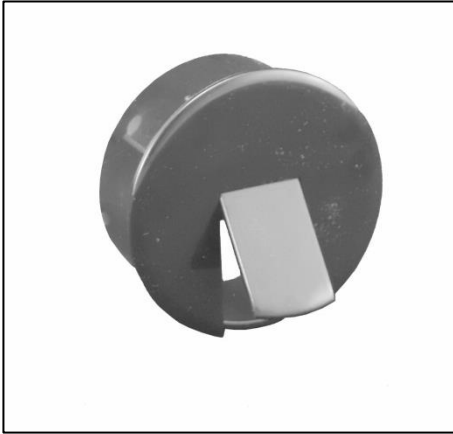
Northway hardware accessories can be added to the cabinet selection. The price includes the hardware cost, machining and installation. Customer supplied drawings will indicate the location and conditions related to each piece of hardware.

Accessory > Operation > Machined Cut Out

You may select a machined cut out from the accessory list Sub-category "Operation". Cut out priced by the square inch and edges are painted black. Unfinished edges available at customer request. Inside corners of cut outs have a ¼" radius. Square inside corners are not available through this program.

Slots must be at least ½" wide. Please indicate the location of The cut out at the time of order.

GROMMET

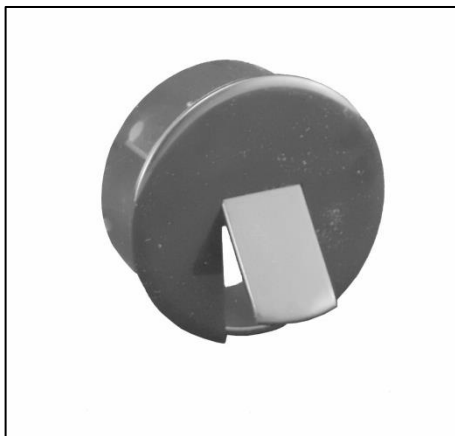


Grommet, 3" diameter



Northway hardware accessories can be added to the cabinet selection. The price includes the hardware cost, machining and installation. Customer supplied drawings will indicate the location and conditions related to each piece of hardware.

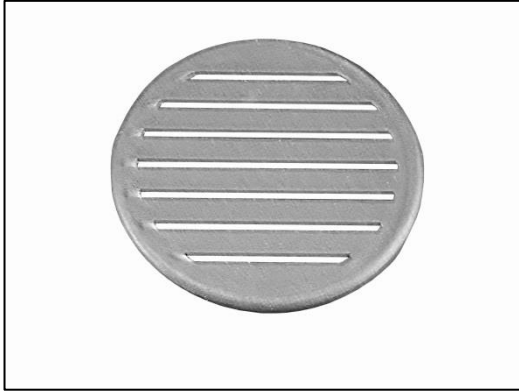
Accessory > Hardware > Grommet



ABS grommet, retractable/self storing Slot cover. When closed, the cover is flat. When open the slot allows access to for Cables and can be removed for larger retrieval.

**Color is Black
Diameter – 3"**

VENT GROMMET



Air vent grommet, 4" diameter



Northway hardware accessories can be added to the cabinet selection. The price includes the hardware cost, machining and installation. Customer supplied drawings will indicate the location and conditions related to each piece of hardware.

Standard Sizes

4 ½" Overall diameter, ¾" deep

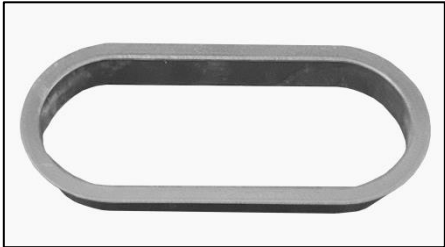
Accessory > Hardware > Vent Grommet Black



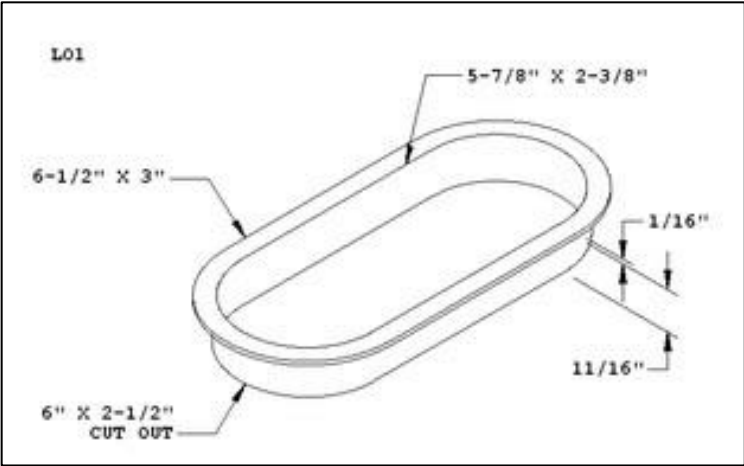
Air vent grommet cap and liner. Fits into a 4" hole.

Color - Black

GLOVE GROMMET



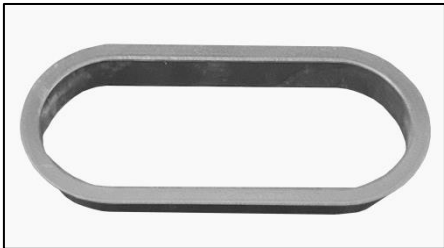
Glove grommet flange, black



Northway hardware accessories can be added to the cabinet selection. The price includes the hardware cost, machining and installation. Customer supplied drawings will indicate the location and conditions related to each piece of hardware.

Accessory > Hardware > Glove Grommet

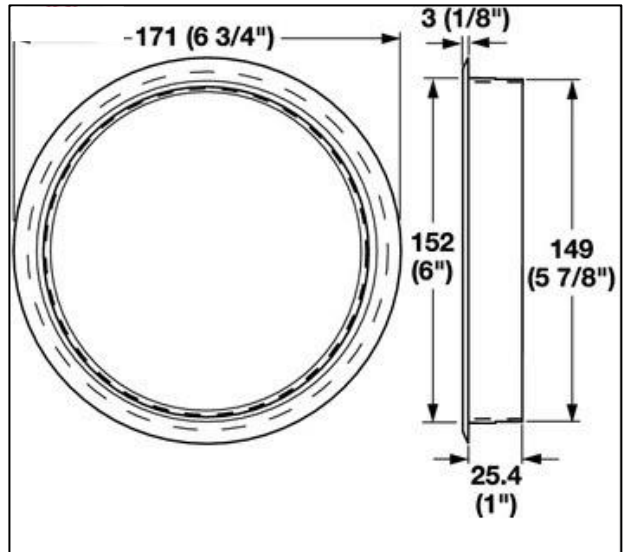
Plastic grommet liner with a 6" x 2 1/2" oval slot for access to plastic glove dispensers. Color is black. Press in fit.



TRASH GROMMET



Trash grommet, black press in 6" diameter



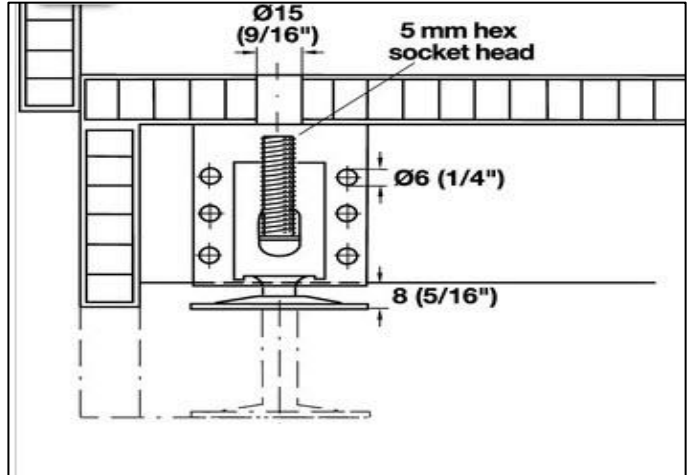
Northway hardware accessories can be added to the cabinet selection. The price includes the hardware cost, machining and installation. Customer supplied drawings will indicate the location and conditions related to each piece of hardware.

Accessory > Hardware > Trash Grommet

Product details

Material	Plastic
Mounting	For press fitting
Drill hole diameter	152

CABINET LEVELERS



**Adjustable height cabinet levelers,
sold in sets of four**

Northway hardware accessories can be added to the cabinet selection. The price includes the hardware cost, machining and installation. Customer supplied drawings will indicate the location and conditions related to each piece of hardware.

Accessory > Hardware > Cabinet Levelers



Adjustable height leveler with supporting bracket.

Minimum height is 2 ¾\"/>

Maximum height is 4 ½\"/>

Material – Steel

Load bearing capacity – 440 lbs.

PANEL LEVELER



Panel leveler, sold in pairs

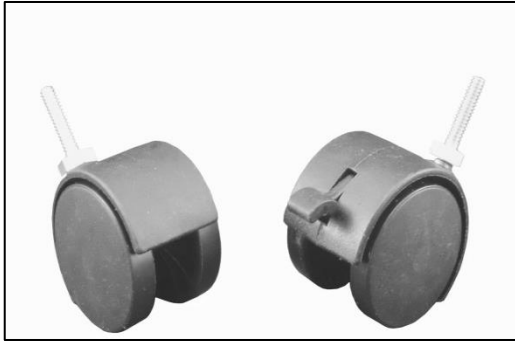


Northway hardware accessories can be added to the cabinet selection. The price includes the hardware cost, machining and installation. Customer supplied drawings will indicate the location and conditions related to each piece of hardware.

Accessory > Hardware > Panel Leveler



TWIN WHEEL CASTERS

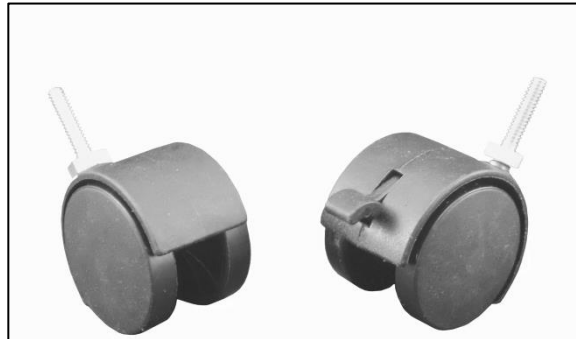


**Set of 4, twin wheel casters,
2 locking, 2 free swing**

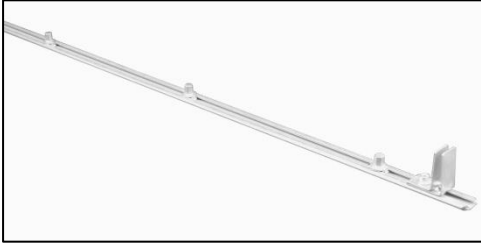
Specifications	
Caster Type	Nylon Hooded Twin Wheel Caster
Wheel Diameter	50 mm
Top Fitting	3/8"-16 x 1" Threaded Stem
Standard Features	
<ul style="list-style-type: none"> • 100% Nylon Body Construction • Black Color • Variety of Fastenings • Load Capacity from 60-100 lbs 	

Northway hardware accessories can be added to the cabinet selection. The price includes the hardware cost, machining and installation. Customer supplied drawings will indicate the location and conditions related to each piece of hardware.

Accessory > Hardware > Set of 4 Twin Wheel Casters



GANG LOCK

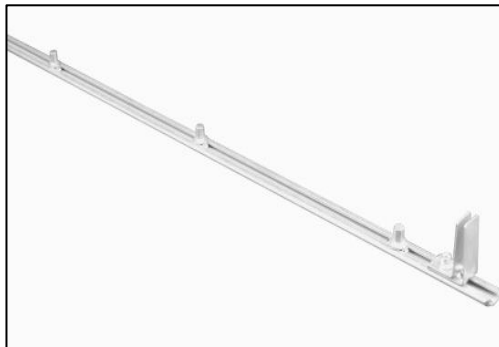


**Gang locking system for
drawer stacks**



Northway hardware accessories can be added to the cabinet selection. The price includes the hardware cost, machining and installation. Customer supplied drawings will indicate the location and conditions related to each piece of hardware.

Accessory > Hardware > Gang Lock



DOUBLE WALL HOOK



**Satin Chrome double wall
mount hook**

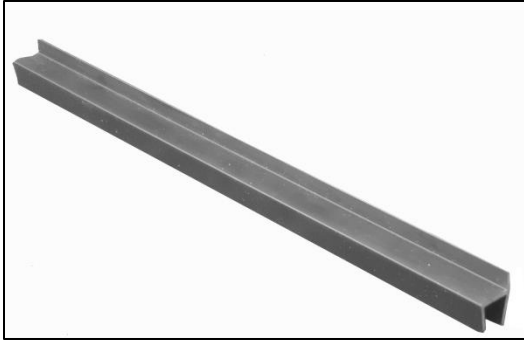


Northway hardware accessories can be added to the cabinet selection. The price includes the hardware cost, machining and installation. Customer supplied drawings will indicate the location and conditions related to each piece of hardware.

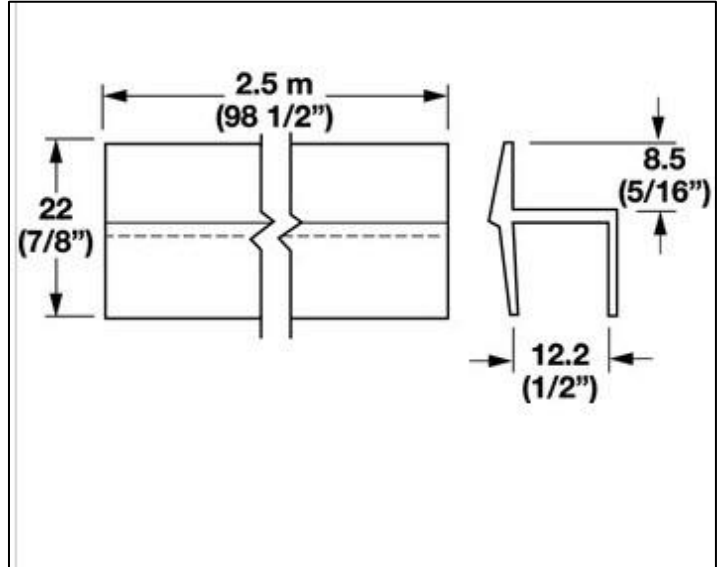
Accessory > Hardware > Double Wall Hook



HANGING FILE RAILS



**Black plastic clip-on file rails
for ½" drawer boxes**



Northway hardware accessories can be added to the cabinet selection. The price includes the hardware cost, machining and installation. Customer supplied drawings will indicate the location and conditions related to each piece of hardware.

Accessory > Hardware > Hanging File Rails

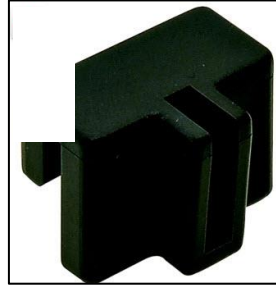


**Black plastic clip-on file rail. Snaps
Onto ½" drawer sides, requiring no
Glue or nails**

LATERAL FILE RAIL



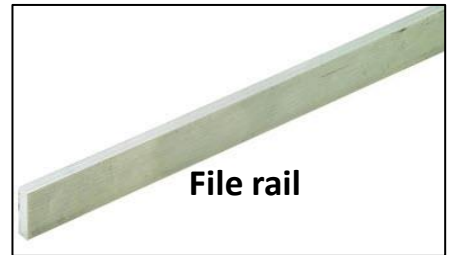
Hanging file rail system for lateral files, sold in sets per drawer



Intermediate rail clip



Side mounting clip



File rail

Northway hardware accessories can be added to the cabinet selection. The price includes the hardware cost, machining and installation. Customer supplied drawings will indicate the location and conditions related to each piece of hardware.

Accessory > Hardware > Lateral File Rail

16 Gauge aluminum bar stock clips into side mounts screw to drawer sides. Intermediate clips and rails make up the lateral file configuration.

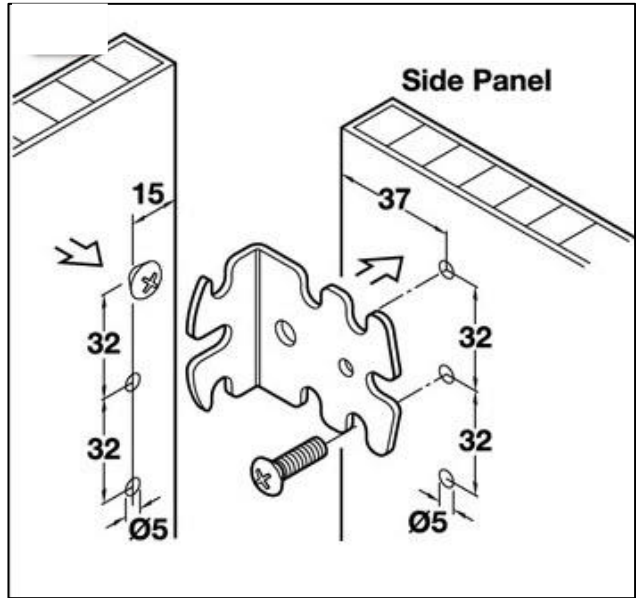
Sold in sets per drawer.



UNIVERSAL BRACKET



Satin chrome universal mounting
bracket



Northway hardware accessories can be added to the cabinet selection. The price includes the hardware cost, machining and installation. Customer supplied drawings will indicate the location and conditions related to each piece of hardware.

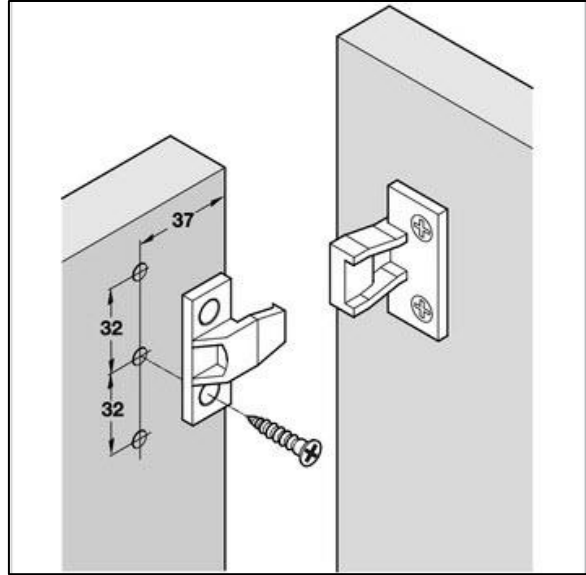
Accessory > Hardware > Universal Bracket



KEKU CLIP



Removable panel clip

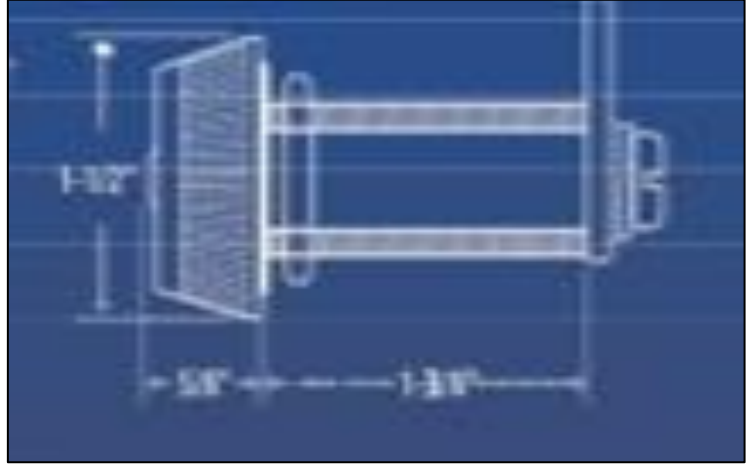


Northway hardware accessories can be added to the cabinet selection. The price includes the hardware cost, machining and installation. Customer supplied drawings will indicate the location and conditions related to each piece of hardware.

Accessory > Hardware > Keku Clip



COMBINATION LOCK



Combination door and drawer lock

Northway hardware accessories can be added to the cabinet selection. The price includes the hardware cost, machining and installation. Customer supplied drawings will indicate the location and conditions related to each piece of hardware.

Accessory > Hardware > Combination Lock

Installs in typical $\frac{3}{4}$ " cam lock configuration.
Assorted cams are available for most applications.
Combinations can be set or changed easily. Up to
10,000 possible combinations.



TAB PULL



Satin chrome tab pull



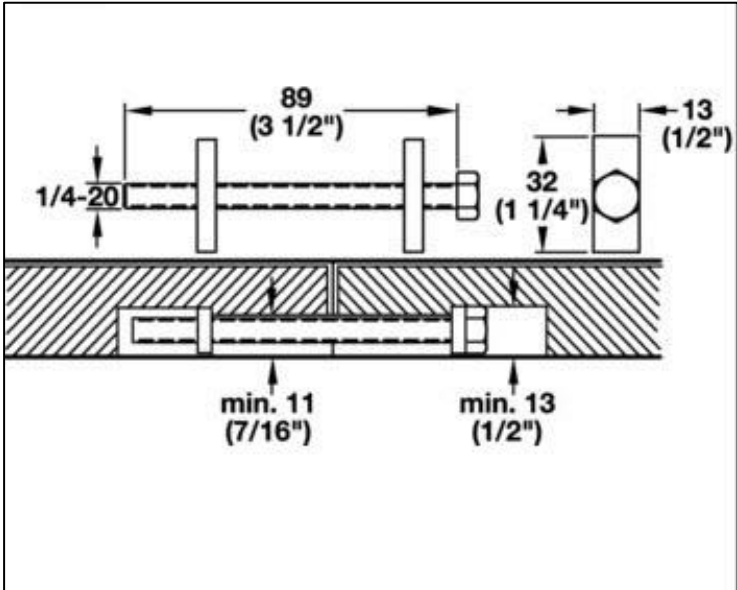
Northway hardware accessories can be added to the cabinet selection. The price includes the hardware cost, machining and installation. Customer supplied drawings will indicate the location and conditions related to each piece of hardware.



TIGHT JOINT FASTENER



**Steel tight joint fastener
for field joint installations**



Northway hardware accessories can be added to the cabinet selection. The price includes the hardware cost, machining and installation. Customer supplied drawings will indicate the location and conditions related to each piece of hardware.

Accessory > Hardware > Tight Joint Fastener

Product details

- Easily installed and quickly assembled for material from 16 mm (5/8")
- Provides even pressure between the surface joint pieces without glue

Material Steel

Length 89 mm

The joint can be disassembled if necessary

LOCKERS



LAMINATE CAB, LOCKER HASPS, COMBINATION LOCK, HOOKS

Laminate cabinets are available in a wide range of standard features and options. Additionally, custom configurations are possible. The website supports many of the features needed to quote and order commercial grade laminate or melamine products. The best value is made available by selecting from the standard features listed below (default settings in the configurator).

Standard door

Laminate exterior, white liner interior, 3mm PVC Edges

Standard Sizes

Total elevation as shown
Width - 48"
Base Height - 52"
Base Depth - 14"

Standard features

Unfinished Sides - $\frac{3}{4}$ " white melamine
Finished Sides - $\frac{3}{4}$ " HPL exterior, white liner interior
Unfinished top stretchers - $\frac{3}{4}$ " white melamine
Unfinished back - $\frac{1}{2}$ " white melamine (Dado in sides)
Unfinished shelves - $\frac{3}{4}$ " white melamine (Less than 27" wide)
Unfinished shelves - 1" white melamine (27" and wider)
Doors and Drawer front - TFL
Cabinet edge band - .018 PVC
Door and Drawer front edge band - .018 PVC or 3mm PVC

Standard Hardware

Hinges - 120-degree Blum Hinge

Standard Options

Finished ends - $\frac{3}{4}$ " HPL exterior, white liner interior
Locker Hasps - (9)
Combination Lock - (1)
Double Coat Hook - (2)

Custom Options

Sub-Bases - $\frac{3}{4}$ " plywood construction (Cabinets have a flush bottom, sub-bases ordered separately)
Locks - Choice of lock and key options
Finished Interiors - $\frac{3}{4}$ " HPL interiors with either white liner exterior or matching HPL exteriors, determined by finished end selection.

Accessory Options

See Accessory list which include Hardware, Components and Operations.