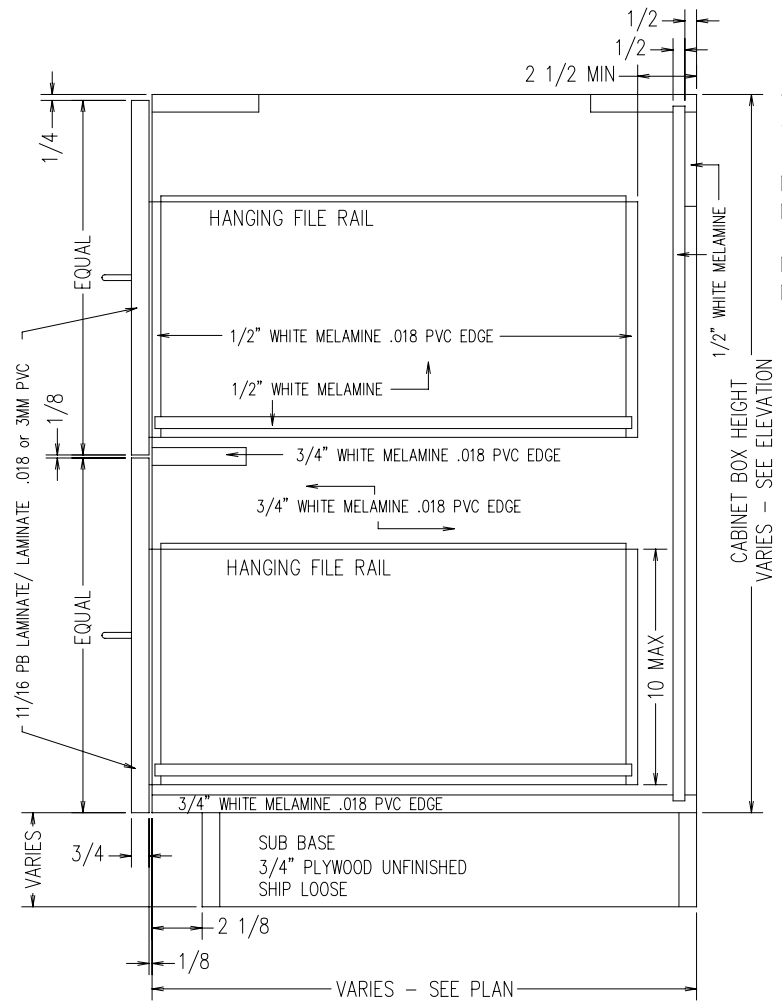


WIDTH FIXED AT  
15-3/4"

MIN HEIGHT = 28-1/2"  
MAX HEIGHT = 35"

MIN DEPTH = 11-1/8"  
MAX DEPTH = 28-1/2"

TYPICAL BOD2D-FILE  
INTEGRAL TOE KICK  
SCALE: 1-1/2" = 1'-0"



WIDTH FIXED AT  
15-3/4"

MIN HEIGHT = 24-1/2"  
MAX HEIGHT = 32"

MIN DEPTH = 11-1/8"  
MAX DEPTH = 28-1/2"

TYPICAL BOD2D-FILE  
FOR SUB BASE  
SCALE: 1-1/2" = 1'-0"