

MIN WIDTH = 9"  
MAX WIDTH = 36"

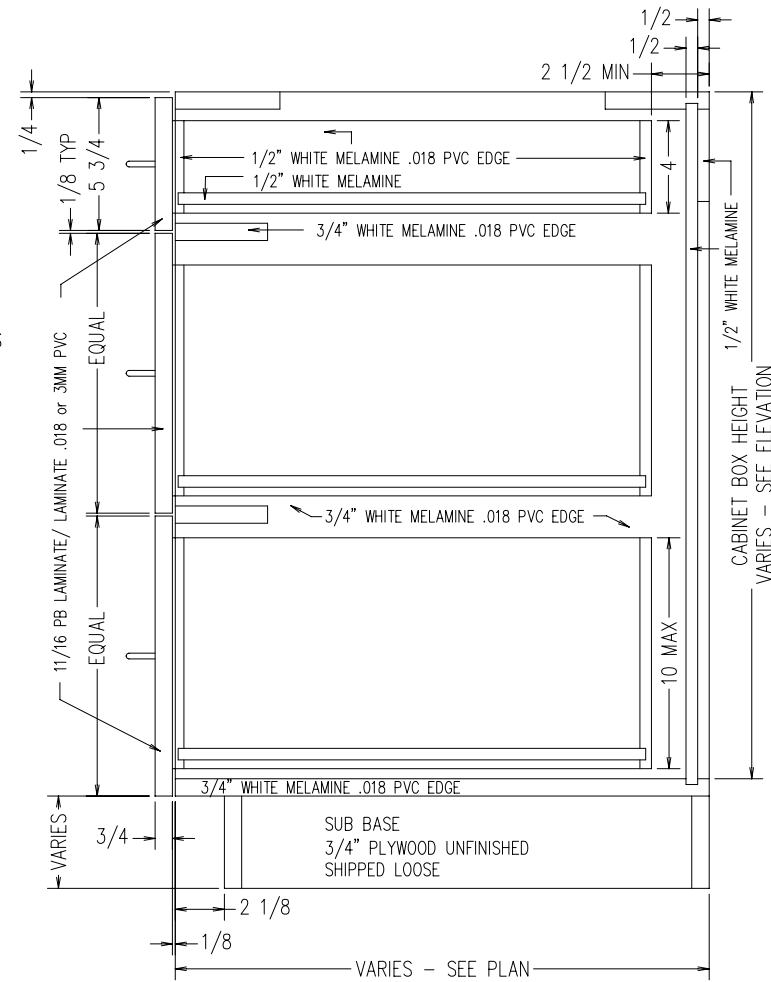
CABINET WIDTH FOR  
FILES IS 15-3/4"

MIN HEIGHT = 22"  
MAX HEIGHT = 35"

MIN HEIGHT FOR 2 FILES  
IS 34"

MIN DEPTH = 11-1/8"  
MAX DEPTH = 28-1/2"

TYPICAL B0D3D-1  
INTEGRAL TOE KICK  
SCALE: 1-1/2" = 1'-0"



MIN WIDTH = 9"  
MAX WIDTH = 36"

CABINET WIDTH FOR  
FILES IS 15-3/4"

MIN HEIGHT = 18"  
MAX HEIGHT = 32"

MIN HEIGHT FOR 2 FILES  
IS 30"

MIN DEPTH = 11-1/8"  
MAX DEPTH = 28-1/2"

TYPICAL B0D3D-1  
FOR SUB BASE  
SCALE: 1-1/2" = 1'-0"