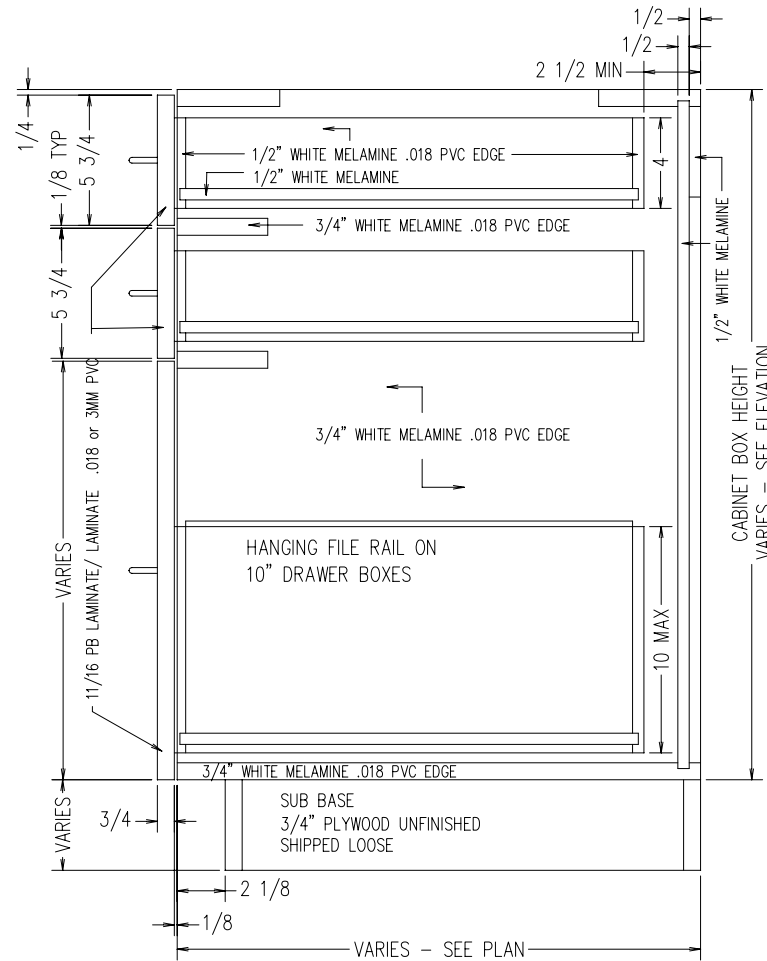


MIN WIDTH = 9"
 MAX WIDTH = 36"
 MIN HEIGHT = 22"
 MAX HEIGHT = 35"
 MIN DEPTH = 11-1/8"
 MAX DEPTH = 28-1/2"

CABINET WIDTH FOR FILE
 DRAWER = 15-3/4"
 MIN HEIGHT FOR FILE IS
 28-1/2"

TYPICAL BOD3D-2
 INTEGRAL TOE KICK
 SCALE: 1-1/2" = 1'-0"



MIN WIDTH = 9"
 MAX WIDTH = 36"
 MIN HEIGHT = 18"
 MAX HEIGHT = 32"
 MIN DEPTH = 11-1/8"
 MAX DEPTH = 28-1/2"

CABINET WIDTH FOR FILE
 DRAWER = 15-3/4"
 MIN HEIGHT FOR FILE IS
 28-1/2"

TYPICAL BOD3D-2
 FOR SUB BASE
 SCALE: 1-1/2" = 1'-0"