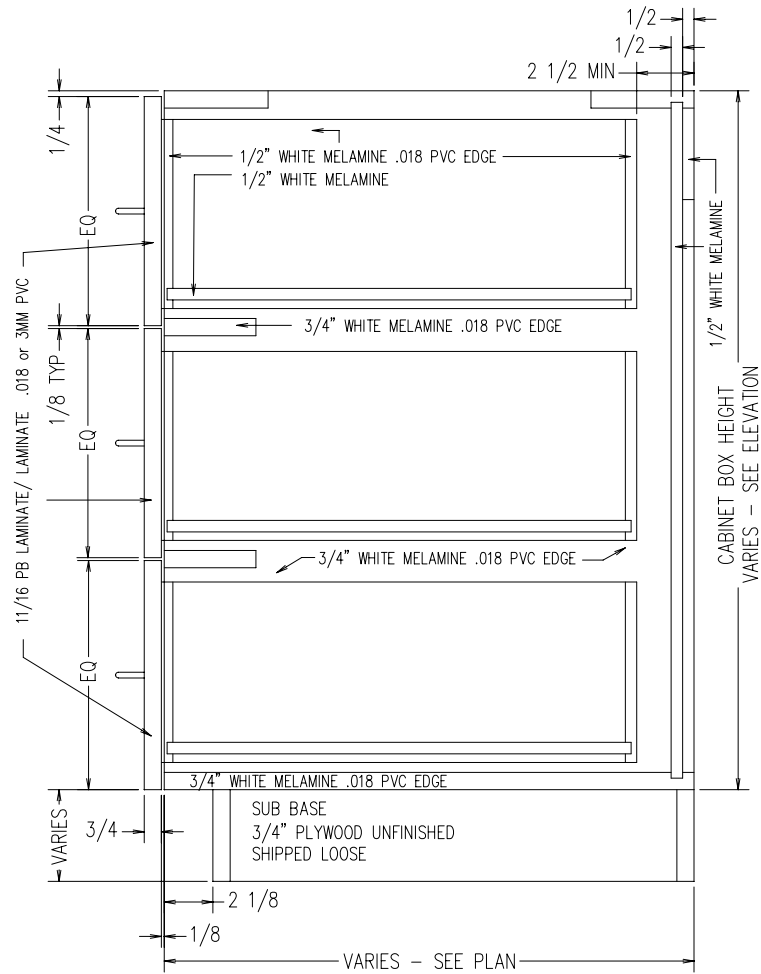


MIN WIDTH = 9"  
 MAX WIDTH = 36"  
 MIN HEIGHT = 22"  
 MAX HEIGHT = 35"  
 MIN DEPTH = 11-1/8"  
 MAX DEPTH = 28-1/2"

FILE DRAWERS NOT AVAILABLE

TYPICAL BOD3D  
 INTEGRAL TOE KICK  
 SCALE: 1-1/2" = 1'-0"



MIN WIDTH = 9"  
 MAX WIDTH = 36"  
 MIN HEIGHT = 18"  
 MAX HEIGHT = 32"  
 MIN DEPTH = 11-1/8"  
 MAX DEPTH = 28-1/2"

FILE DRAWERS NOT AVAILABLE

TYPICAL BOD3D  
 FOR SUB BASE  
 SCALE: 1-1/2" = 1'-0"