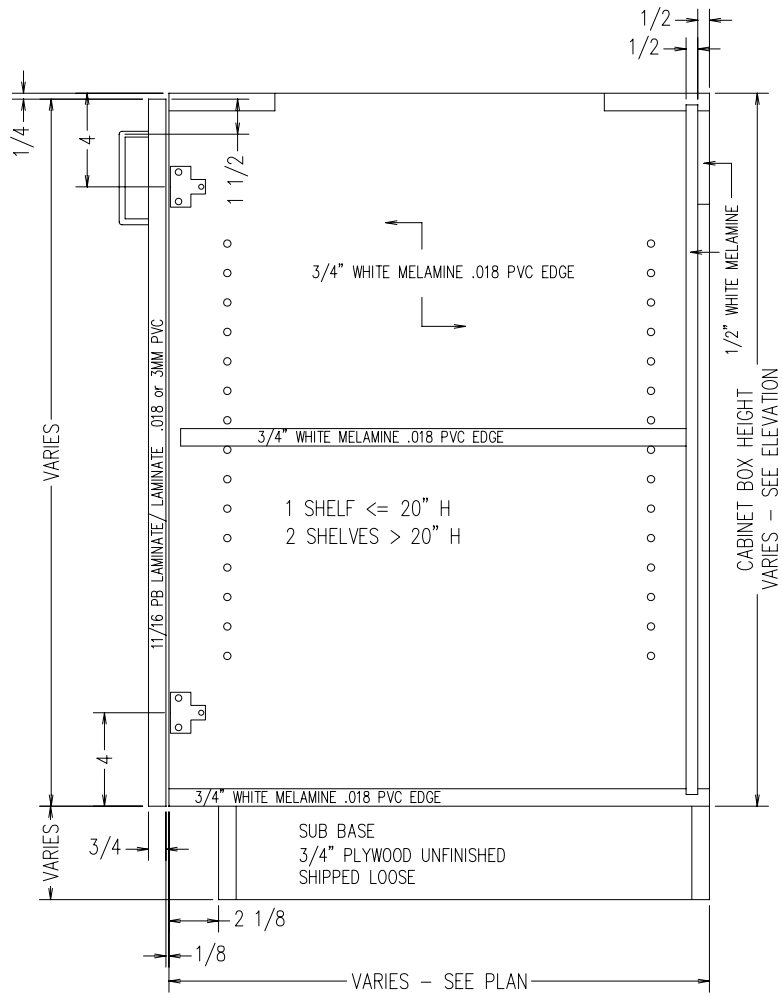


MIN WIDTH = 9"
 MAX WIDTH = 30"
 MIN HEIGHT = 16"
 MAX HEIGHT = 35"
 MIN DEPTH = 9"
 MAX DEPTH = 28-1/2"

TYPICAL B1D
 INTEGRAL TOE KICK
 SCALE: 1-1/2" = 1'-0"



MIN WIDTH = 9"
 MAX WIDTH = 30"
 MIN HEIGHT = 12"
 MAX HEIGHT = 32"
 MIN DEPTH = 9"
 MAX DEPTH = 28-1/2"

TYPICAL B1D
 FOR SUB BASE
 SCALE: 1-1/2" = 1'-0"