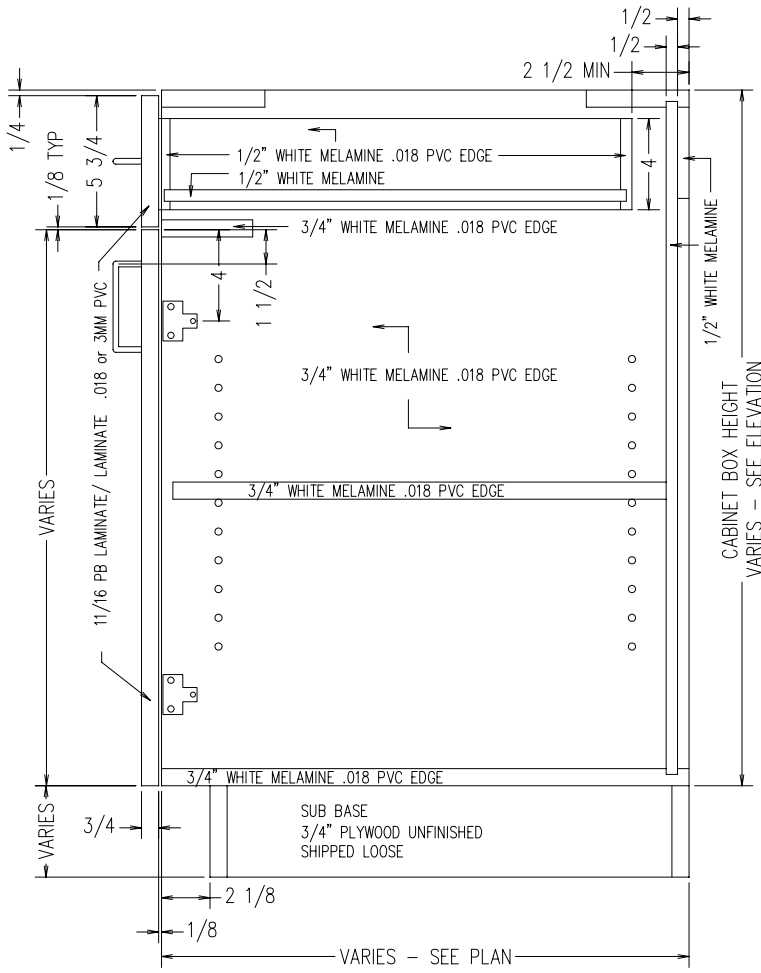


MIN WIDTH = 9"
 MAX WIDTH = 30"
 MIN HEIGHT = 22"
 MAX HEIGHT = 35"
 MIN DEPTH = 11-1/8"
 MAX DEPTH = 28-1/2"

NO SHELF UNDER 24"
 HIGH
 NO BORING UNDER 24"
 HIGH

TYPICAL B1D1D
 INTEGRAL TOE KICK
 SCALE: 1-1/2" = 1'-0"



MIN WIDTH = 9"
 MAX WIDTH = 30"
 MIN HEIGHT = 18"
 MAX HEIGHT = 32"
 MIN DEPTH = 11-1/8"
 MAX DEPTH = 28-1/2"

NO SHELF UNDER 20"
 HIGH
 NO BORING UNDER 20"
 HIGH

TYPICAL B1D1D
 FOR SUB BASE
 SCALE: 1-1/2" = 1'-0"