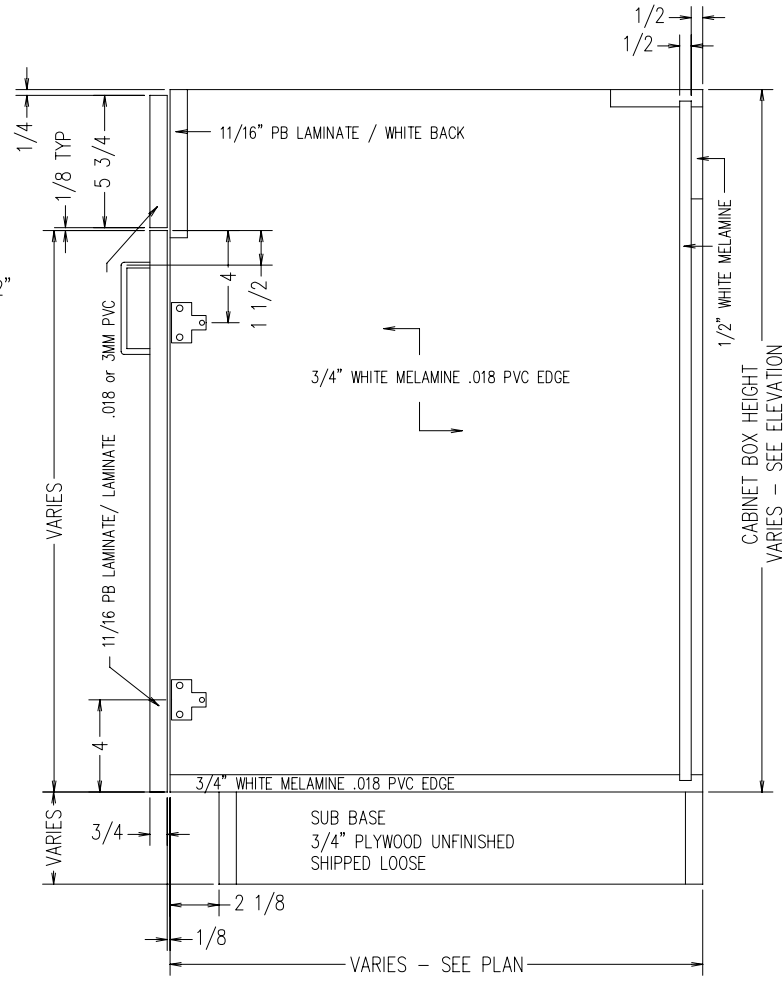


MIN WIDTH = 9"  
 MAX WIDTH = 30"

MIN HEIGHT = 22"  
 MAX HEIGHT = 35"

MIN DEPTH = 11-1/8"  
 MAX DEPTH = 28-1/2"

TYPICAL B1D1F  
 INTEGRAL TOE KICK  
 SCALE: 1-1/2" = 1'-0"



MIN WIDTH = 9"  
 MAX WIDTH = 30"

MIN HEIGHT = 18"  
 MAX HEIGHT = 32"

MIN DEPTH = 11-1/8"  
 MAX DEPTH = 28-1/2"

TYPICAL B1D1F  
 FOR SUB BASE  
 SCALE: 1-1/2" = 1'-0"