

TYPICAL B2D1D
INTEGRAL TOE KICK
SCALE: 1-1/2" = 1'-0"

B1D1D
MIN WIDTH = 9"
MAX WIDTH = 30"

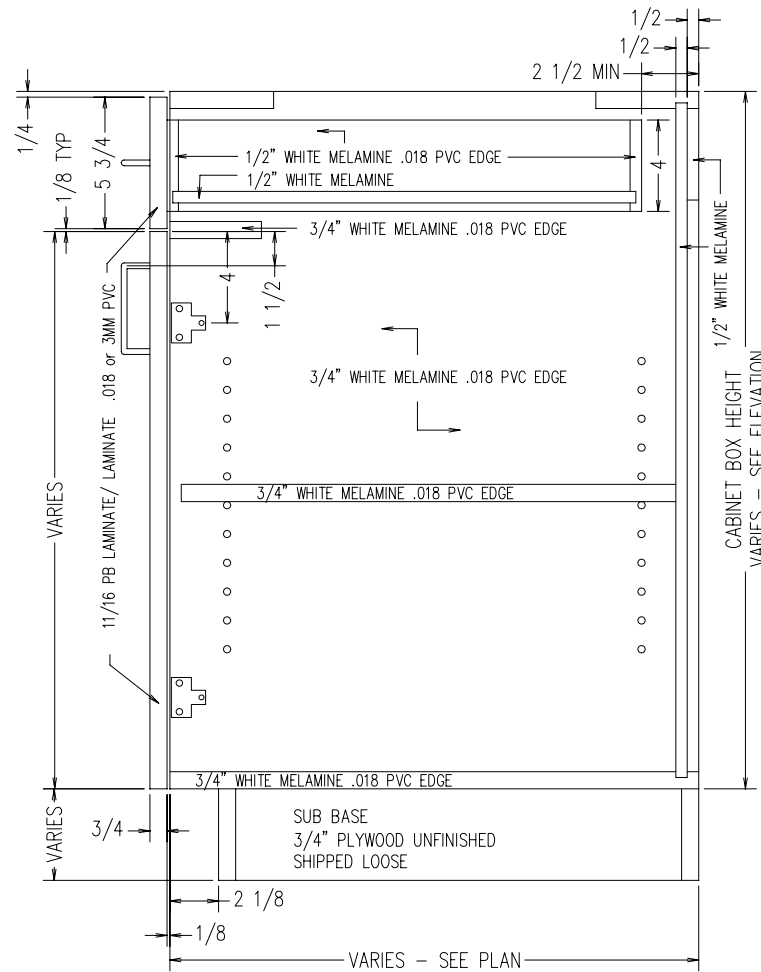
B2D1D
MIN WIDTH = 21"
MAX WIDTH = 48"

MIN HEIGHT = 22"
MAX HEIGHT = 35"

MIN DEPTH = 11-1/8"
MAX DEPTH = 28-1/2"

NO SHELF UNDER 24"
HIGH

NO BORING UNDER 24"
HIGH



TYPICAL B2D1D
FOR SUB BASE
SCALE: 1-1/2" = 1'-0"

B1D1D
MIN WIDTH = 9"
MAX WIDTH = 30"

B2D1D
MIN WIDTH = 21"
MAX WIDTH = 48"

MIN HEIGHT = 18"
MAX HEIGHT = 32"

MIN DEPTH = 11-1/8"
MAX DEPTH = 28-1/2"

NO SHELF UNDER 20"
HIGH

NO BORING UNDER 20"
HIGH