

MIN WIDTH = 21"  
MAX WIDTH = 48"

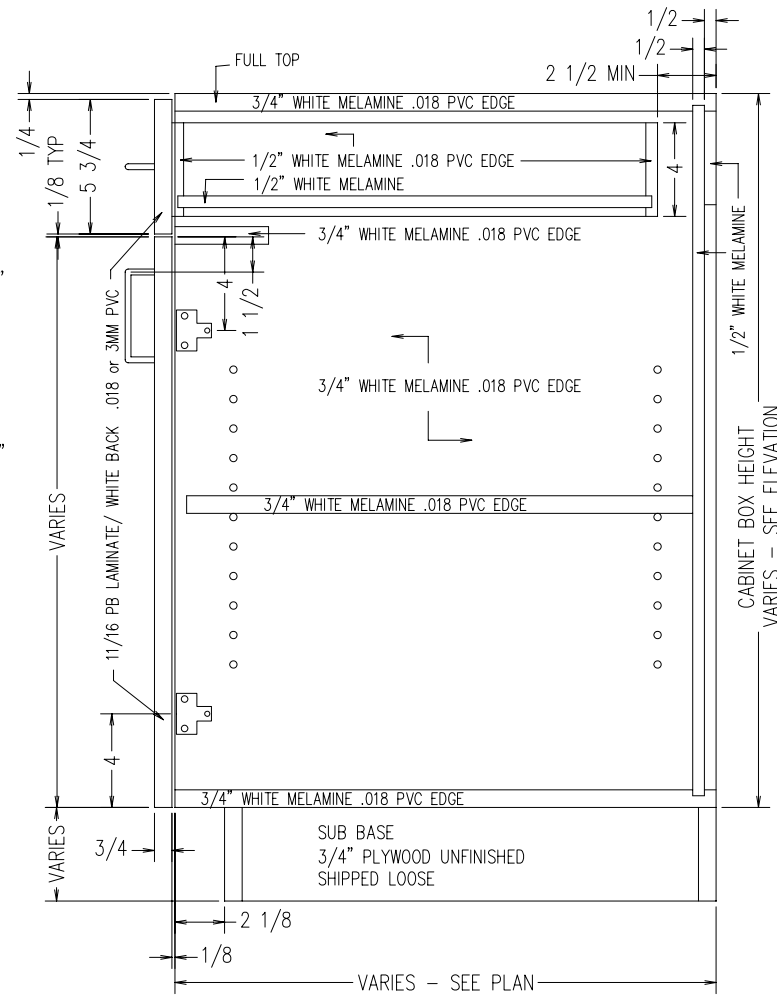
MIN HEIGHT = 22"  
MAX HEIGHT = 35"

MIN DEPTH = 11-1/8"  
MAX DEPTH = 28-1/2"

NO SHELF UNDER 24"  
HIGH

NO BORING UNDER 24"  
HIGH

TYPICAL B2D2D  
INTEGRAL TOE KICK  
SCALE: 1-1/2" = 1'-0"



MIN WIDTH = 21"  
MAX WIDTH = 48"

MIN HEIGHT = 18"  
MAX HEIGHT = 32"

MIN DEPTH = 11-1/8"  
MAX DEPTH = 28-1/2"

NO SHELF UNDER 20"  
HIGH

NO BORING UNDER 20"  
HIGH

TYPICAL B2D2D  
FOR SUB BASE  
SCALE: 1-1/2" = 1'-0"