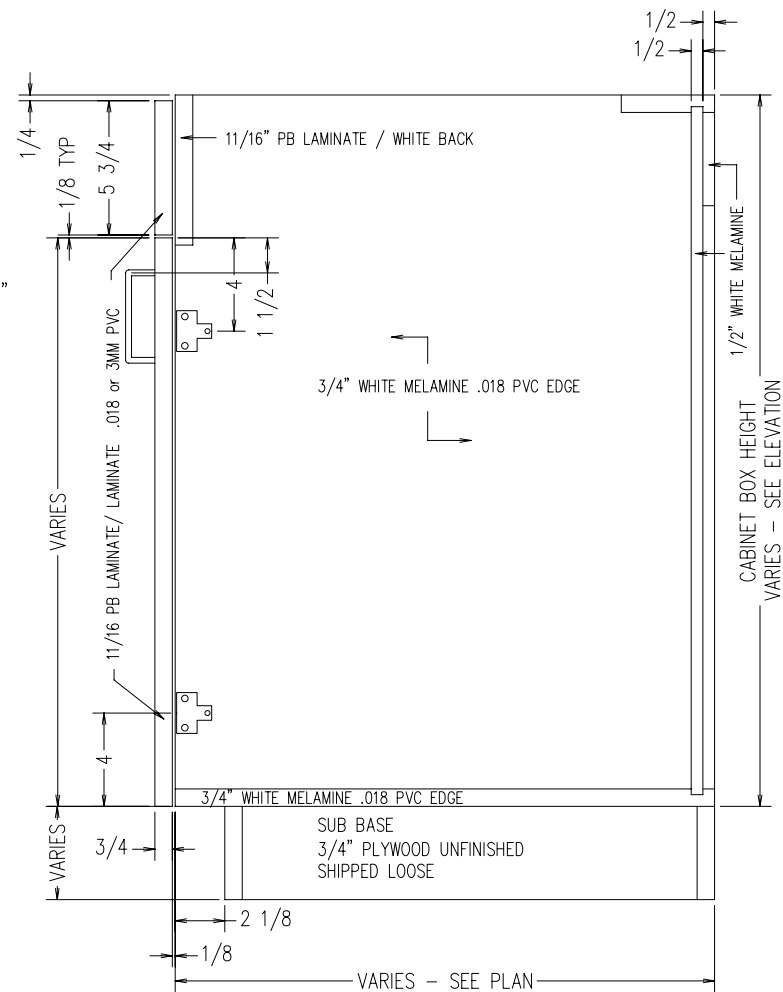


MIN WIDTH = 21"
MAX WIDTH = 48"
MIN HEIGHT = 22"
MAX HEIGHT = 35"
MIN DEPTH = 11-1/8"
MAX DEPTH = 28-1/2"

TYPICAL B2D2F
INTEGRAL TOE KICK
SCALE: 1-1/2" = 1'-0"



MIN WIDTH = 21"
MAX WIDTH = 48"
MIN HEIGHT = 18"
MAX HEIGHT = 32"
MIN DEPTH = 11-1/8"
MAX DEPTH = 28-1/2"

TYPICAL B2D2F
FOR SUB BASE
SCALE: 1-1/2" = 1'-0"