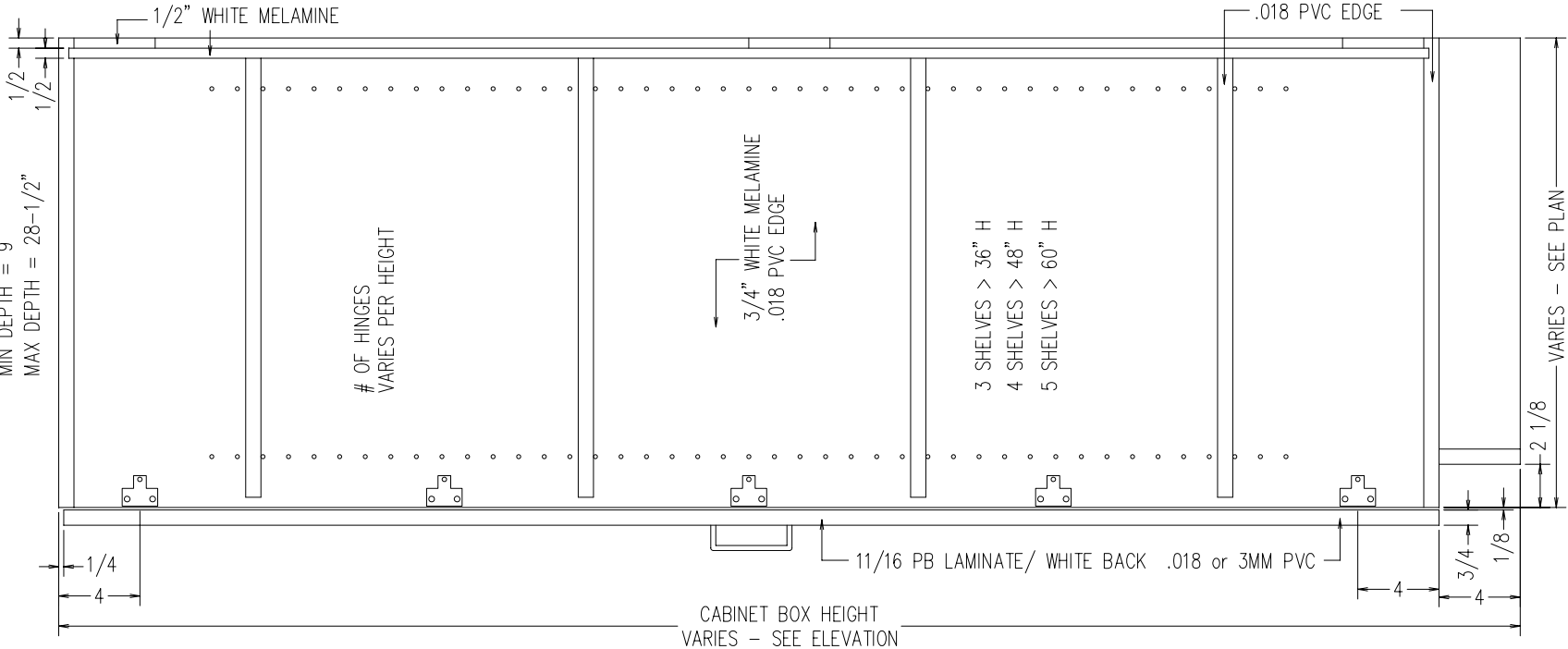


MIN WIDTH = 21"
MAX WIDTH = 48"

MIN HEIGHT = 35.001"
MAX HEIGHT = 96"

MIN DEPTH = 9"
MAX DEPTH = 28-1/2"



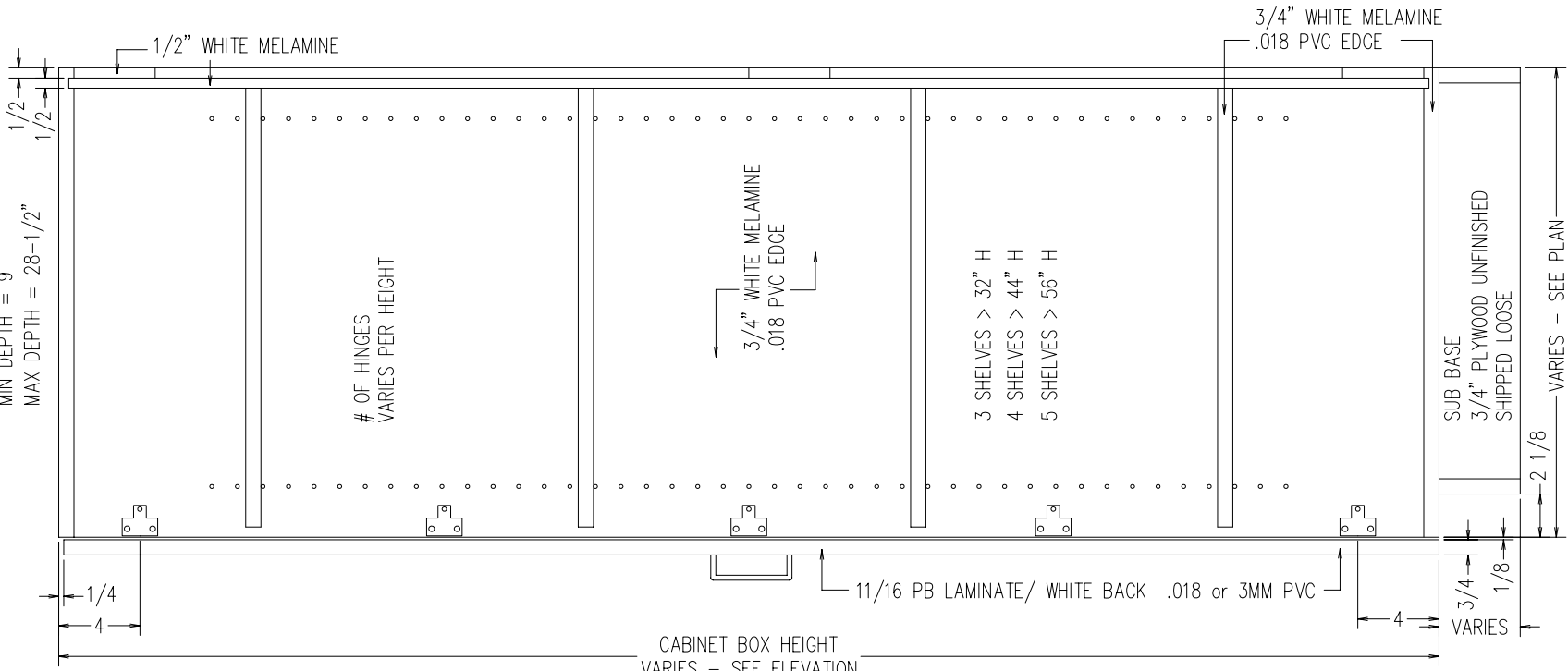
CABINET BOX HEIGHT
VARIES - SEE ELEVATION

TYPICAL T2D
INTEGRAL TOE KICK
SCALE: 1-1/2" = 1'-0"

MIN WIDTH = 21"
MAX WIDTH = 48"

MIN HEIGHT = 31.001"
MAX HEIGHT = 96"

MIN DEPTH = 9"
MAX DEPTH = 28-1/2"



CABINET BOX HEIGHT
VARIES - SEE ELEVATION

TYPICAL T2D
FOR SUB BASE
SCALE: 1-1/2" = 1'-0"